

ROTARY SWITCH



RMS ROTARY MAINS SWITCH

ELECTRICAL & MECHANICAL SPECIFICATION

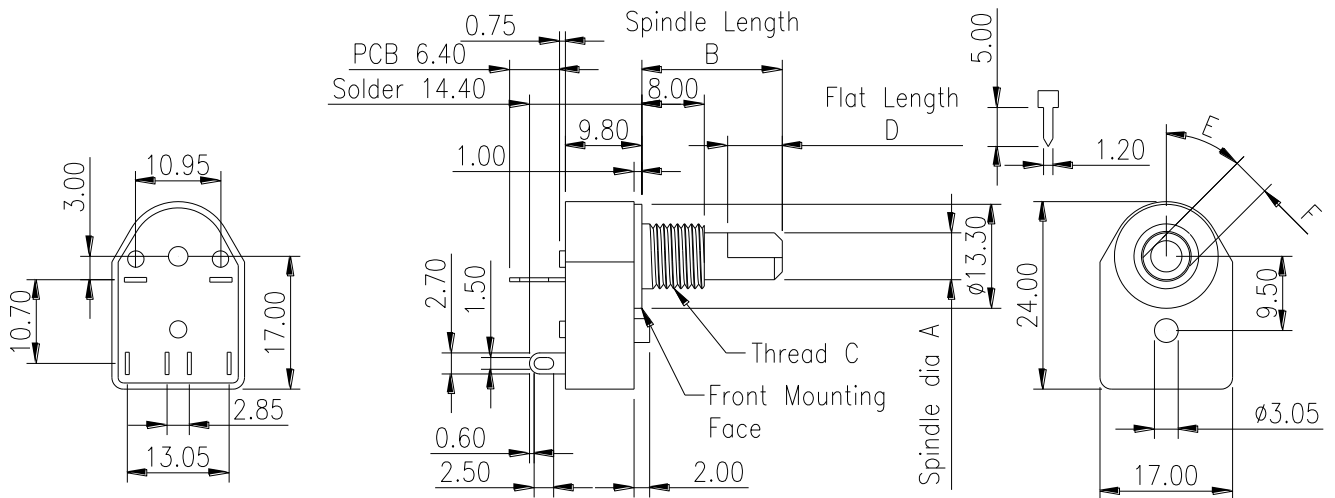
| | | | |
|----------------------------|-----------------------------|-------------------------------|---------------------------|
| Switch Rating: | 4/80A @250V ac. R/C | Life: | >15,000 Cycles |
| | 10A @12V dc | Operating Temperature: | -25°C to +85°C |
| Proof Voltage: | 3kVac (Initial) | Insulation Resistance: | >999MΩ @ 500Vdc (Initial) |
| Contact Resistance: | <20mΩ (Initial) | Contact Gap: | >2.5mm (min) |
| Switch Contacts: | Silver Cadmium Oxide | Tag Panel: | SRBP |
| Switch Chamber: | Polyamide 6.6 G.F. V0 Rated | Terminals: | Brass CZ108, Ag plated |

FEATURES

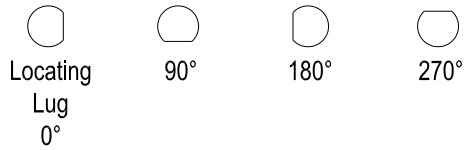
- Non changeover type Approved to EN61058 ENEC (VDE)
- Made in UK
- Double pole single throw
- Solder or pcb terminals
- 45° index angle
- Spindle flats (optional)

TERMINAL LAYOUT

OPTIONAL SPINDLE
FLAT SHOWN.



OPTIONAL SPINDLE FLATS



Note: The angle of the spindle flat is shown with the locating lug at the bottom of the switch, when the switch is set in the fully anticlockwise position (position 1) viewed from the knob end of the spindle

STANDARD PART NUMBERS

| Basic Types | A | B | C | D | E | F |
|-----------------|------------------|----------------|--------------|---------------------|---------------|--------------|
| | Spindle diameter | Spindle length | Bush thread | Spindle flat length | Spindle angle | Spindle flat |
| Imperial | 6.35mm | 55mm | 9.52 x 32TPI | No Flat | N/a | N/a |
| Metric | 6.0mm | 38mm | M10 x0.75 | No Flat | N/a | N/a |

| Circuitry | Terminal layout viewed from rear | Terminal type | Standard Metric Switches | Standard Imperial Switches |
|----------------------|----------------------------------|---------------|--------------------------|----------------------------|
| 2 pole off-on | | Solder | RMS1035 | RMS1100 |
| | | PCB | RMS1130 | RMS1159 |

| Circuitry | Terminal layout viewed from rear of switch | Terminal type | Standard Metric Switches | Standard Imperial Switches |
|---|--|---------------|--------------------------|----------------------------|
| 2 pole changeover (not approved) | | Solder | RMS1089 | RMS1101 |
| | | PCB | RMS1153 | RMS1128 |

