



# MASTER - LED HID SOX



## MAS LED SOX M 2.5Klm 18W 840 B22 FR

Philips MASTER LED HID SOX offers an easy and short payback LED solution to replace SOX systems. These lamps bring the LED benefits of energy efficiency and long lifetime to conventional HID SOX replacement. They also come with a low initial investment to ensure instant savings. With the right lamp size, cap and light distribution, you can easily retrofit the traditional SOX system with MASTER LED HID SOX lamp thereby enhancing the light quality with comfort and safety without having to replace the fixtures or sacrifice the light effect

### Warnings and Safety

- Please refer to the installation guide or consult a Philips Lighting representative for wiring diagram and instructions.

### Product data

General Information	
Cap-Base	B22 [B22]
Nominal lifetime	50,000 hour(s)
Switching Cycle	50,000
Lighting Technology	LED
Flux measurement reference	Sphere
CE mark	Yes
EU RoHS compliant	Yes

Light Technical	
Color Code	840 [CCT of 4000K]
Beam Angle (Nom)	230 degree(s)
Luminous Flux	2,500 lumen
Color Designation	Cool White (CW)
Correlated Color Temperature (Nom)	4000 K

Luminous Efficacy (rated) (Nom)	138.00 lm/W
Color Consistency	<6
Color rendering index (CRI)	80
LLMF At End Of Nominal Lifetime (Nom)	70 %
Flickering value (PstLM)	1
Stroboscopic effect value (SVM)	2
Photobiological safety according to EN 62471	RG1

Operating and Electrical	
Line Frequency	50 to 60 Hz
Input Frequency	50 to 60 Hz
Power Consumption	18 W
Wattage Equivalent	26 W
Starting Time (Nom)	0.5 s
Warm-up time to 60% light	0.5 s

# MASTER - LED HID SOX

Power Factor (Fraction)	0.9
Voltage (Nom)	100-240 V

## Temperature

Ambient temperature range	-20 °C to 45 °C
T-Case Maximum (Nom)	63 °C

## Controls and Dimming

Dimmable	No
----------	----

## Mechanical and Housing

Bulb Shape	T-shape
------------	---------

## Approval and Application

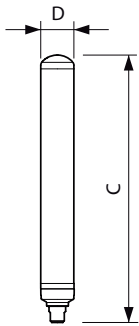
Energy Efficiency Class	D
-------------------------	---

Energy Consumption kWh/1000 h	18 kWh
EPREL Registration Number	421459

## Product Data

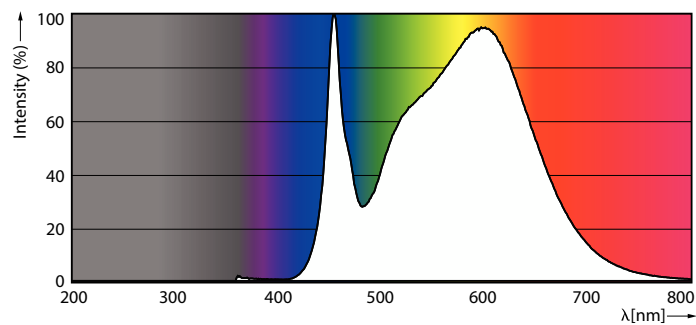
Full product code	871951430562500
Order product name	MAS LED SOX M 2.5Klm 18W 840 B22 FR
Order code	929002496802
Numerator - Quantity Per Pack	1
Numerator - Packs per outer box	6
Material Nr. (12NC)	929002496802
Full product name	MAS LED SOX M 2.5Klm 18W 840 B22 FR
EAN/UPC - Case	8719514305632
EAN/UPC - Product/Case	8719514305625

## Dimensional drawing

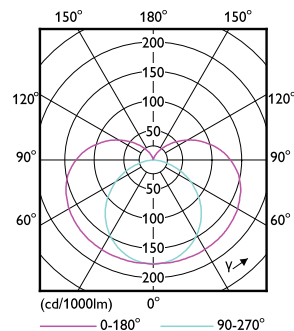


Product	D	C
MAS LED SOX M 2.5Klm 18W 840 B22 FR	52 mm	312 mm

## Photometric data



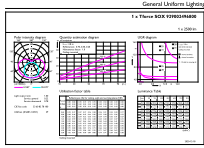
Spectral Power Distribution Colour - MAS LED SOX M 2.5Klm 18W 840 B22 FR



Light Distribution Diagram - MAS LED SOX M 2.5Klm 18W 840 B22 FR

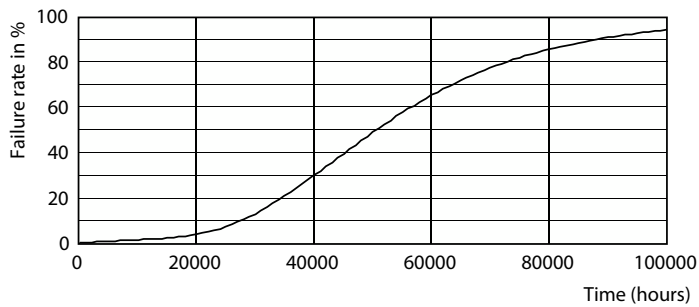
# MASTER - LED HID SOX

## Photometric data

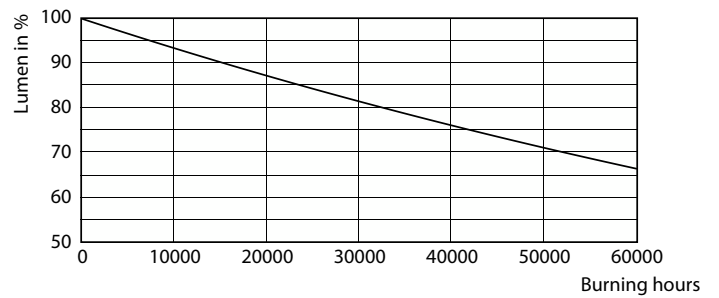


General uniform lighting - MAS LED SOX M 2.5Klm 18W 840 B22 FR

## Lifetime



Life Expectancy Diagram - MAS LED SOX M 2.5Klm 18W 840 B22 FR



Lumen Maintenance Diagram - MAS LED SOX M 2.5Klm 18W 840 B22 FR

