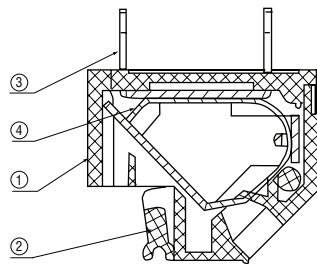


10A 5.08mm 45° Screwless Terminal Blocks

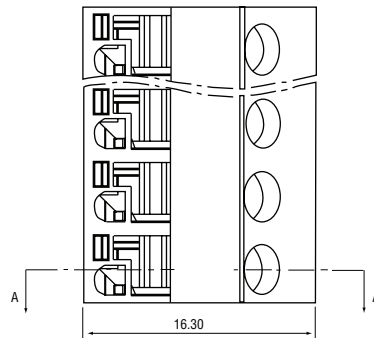
Pitch: 5.8mm
 Rated voltage/current: 300V/10A
 Operation temperatures: -40°C to +105°C
 Withstanding voltage: AC2000V/1min.
 Insulation resistance: 5000MΩ/DC1000V
 Wire range: 22 to 16AWG, 0,2-1.5mm²

Pitch range in mm			Nominal dimensions range in mm					-
To 6	Over 6 to 10	Over 10 to 24	To 30	Over 30 to 60	Over 60 to 100	Over 100 to 150	Over 150	
±0.10	±0.15	±0.25	±0.2	±0.3	±0.5	±0.7	±1.0	005/10

No.	Material	Plating
1	PA66	UL94V-0
2	PA66	UL94V-0
3	Brass	SnCe
4	Stainless Steel	



Section A - A



Order code	Poles
21-3021	2
21-3022	3

