

## stepped jaws attachment for MH-S

Accessories for MH-S art. no.: 28858001-008

**ATORN**<sup>®</sup>

### Application

To achieve greater clamping ranges by mounting on movable and fixed jaws.

### Version

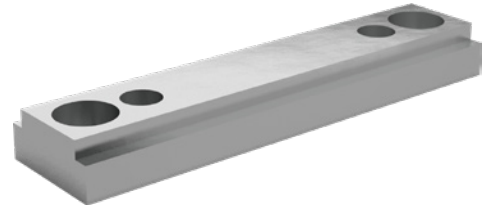
- Different versions depending on the application
- Jaws hardened and ground

### Advantage

- Increase the clamping range by attaching to the movable and fixed jaw.
- 2 clamping stages can be used

### Delivery

1 x stepped jaw attachment for MH-S; incl. fastening screws



<b>Art. no.</b>	<b>28858 040</b>
<b>Jaws width</b>	124.9 mm

### EAN-Code

4050293534689