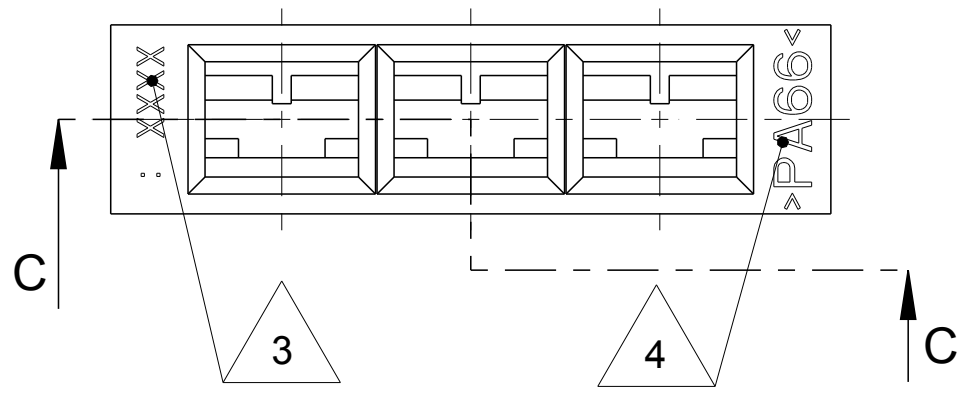
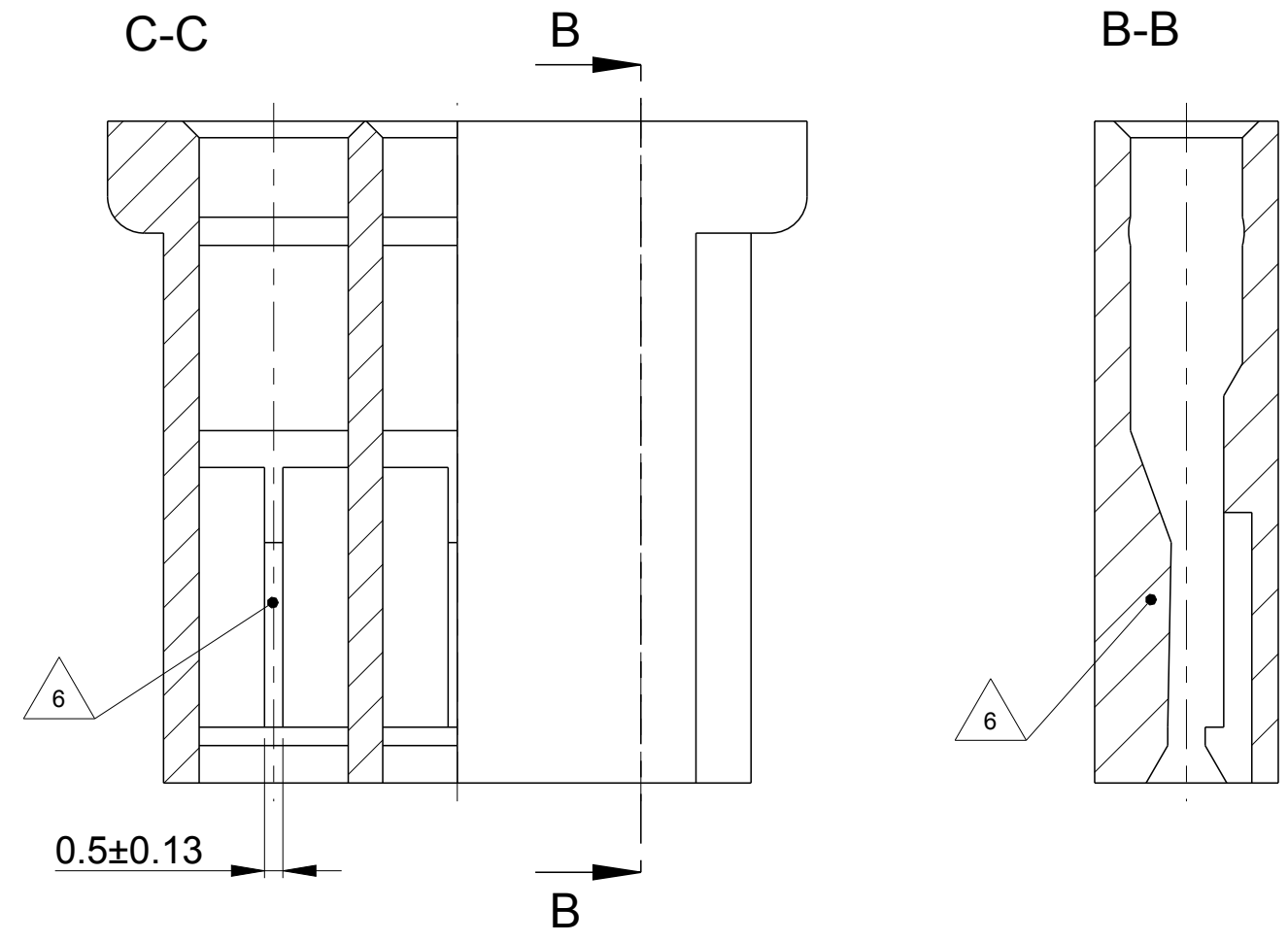
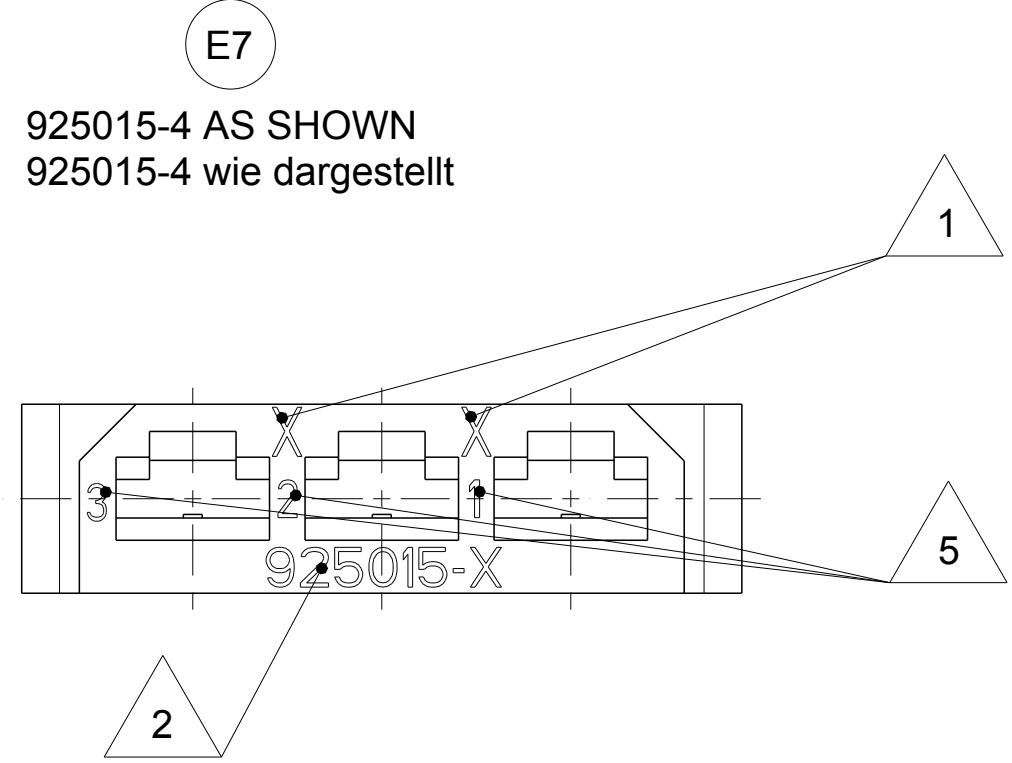
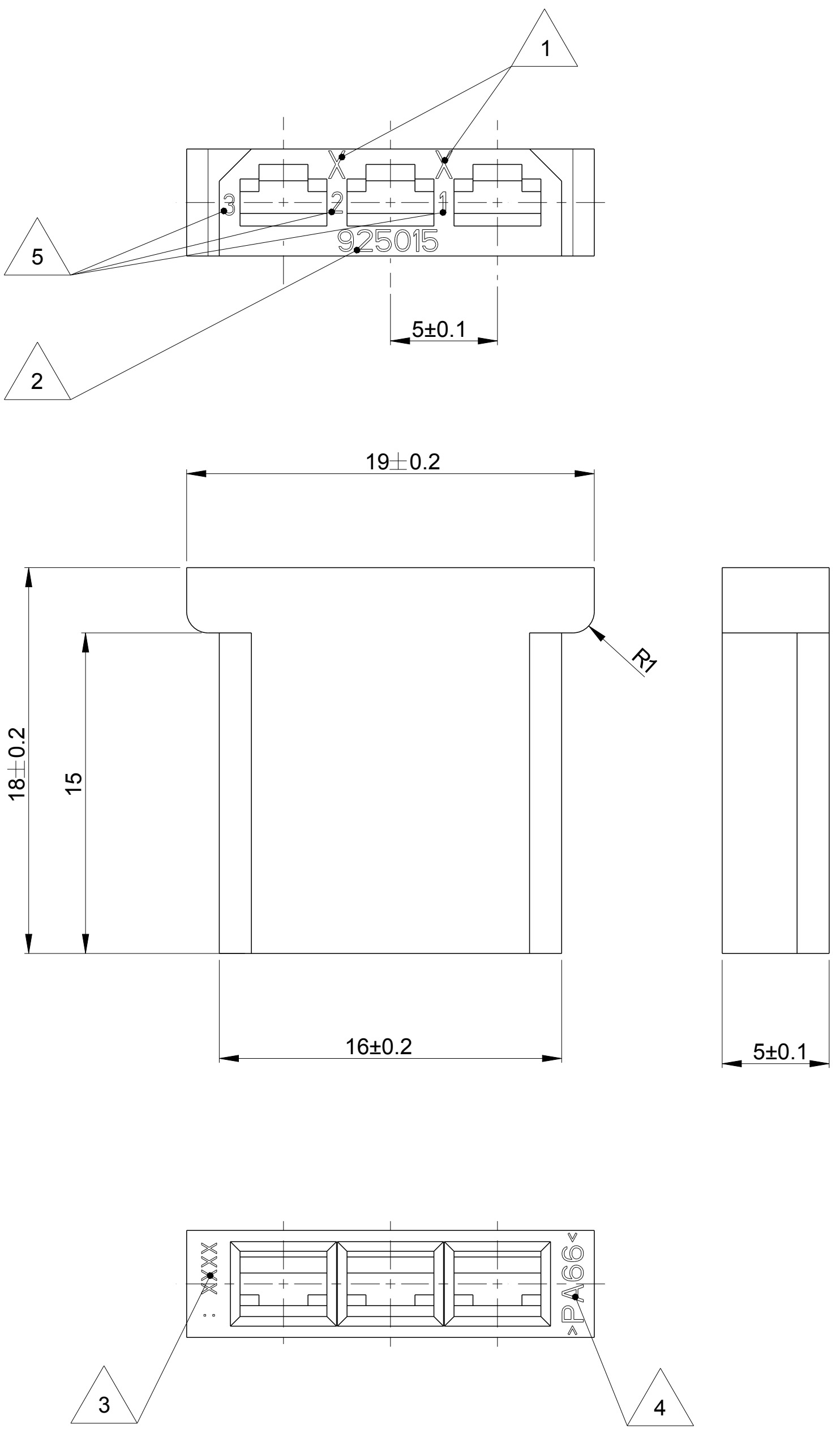


THIS DRAWING IS UNPUBLISHED. RELEASED FOR PUBLICATION 2006
 © COPYRIGHT 2006 BY - ALL RIGHTS RESERVED.

LOC		DIST		REVISIONS			
P	LTR	DESCRIPTION	DATE	DWN	APVD		
E4		PN 925015-4 added	28MAR2006	Haas	Stre.		
E5		REVISED PER ECO-11-005150	03MAY2011	RK	HMR		
E6		New packaging variant 925015-5	07NOV2012	Mah.	Schin		
E7		Drawing updated	28JAN2013	Mah.	Schin		



- NOTES
Bemerkungen
- 1 MOULD CAVITY NUMBER
Werkzeugnestzahl
 - 2 PART NUMBER
Teilenummer
 - 3 ARTWORK LOGO
Firmenzeichen
 - 4 MATERIAL MARKING
Werkstoffkennzeichnung
 - 5 CHAMBER NUMBER
Kammernummer
 - 6 CODING RIB
Kodiersteg
 - 7 WEIGHT: 925015-0/-1/-2/-3 - 0,94g
WEIGHT: 925015-4 - 0,98g
Gewicht: 925015-0/-1/-2/-3 - 0,94g
Gewicht: 925015-4 - 0,98g
 - 8 PACKAGING VARIANT OF 925015-0
Verpackungsvariante von 925015-0

ORDER-NO.	REV	DESCRIPTION	MATERIAL	COLOUR
925015-5	8	A 3POS. HOUSING	PA6.6	NATURAL
925015-4	6	A 3POS. HOUSING	PA6.6	NATURAL
925015-3		E 3POS. HOUSING	PA6.6 (ZYTEL 101)	NATURAL
925015-2		E 3POS. HOUSING	PA6.6	RED
925015-1		E 3POS. HOUSING	PA6.6	BLACK
925015-0		E 3POS. HOUSING	PA6.6	NATURAL

THIS DRAWING IS A CONTROLLED DOCUMENT.

DWN	Haas,C.	21MAR2005
CHK	Stredak,F.	22MAR2005
APVD	Bleicher,M.	31MAR2005
PRODUCT SPEC		
APPLICATION SPEC		
WEIGHT	SEE NOTE	

Customer Drawing

SCALE 5:1 SHEET 1 OF 1 REV E7

TE Connectivity

3POS. FASTIN-FASTON REC. HSG. SER.110
3pol. F.F. Steckhuelsengehaeuse SERIE 2.8

SIZE CAGE CODE DRAWING NO RESTRICTED TO

A2 00779 C-925015