

## Device Support:

- ◆ ATtiny12 (I)
- ◆ ATtiny15 (I)
- ◆ ATtiny22 (I)
- ◆ AT90S1200 (I)
- ◆ AT90S2313 (I)
- ◆ AT90S2323 (I)
- ◆ AT90S2343 (I)
- ◆ AT90S4433 (I)
- ◆ AT90S8535 (I)
- ◆ AT90S8515 (I)
- ◆ ATmega16 (I)
- ◆ ATmega32 (I)
- ◆ ATmega103 (A)
- ◆ ATmega323(I)
- ◆ ATmega64 (I)
- ◆ ATmega128
- ◆ ATmega161 (I)
- ◆ ATmega163 (I)

I=ISP Only

A=Requires Adapter

## Operating System:

- ◆ Win95/98/ME
- ◆ Win2000/NT4
- ◆ Windows 3.1

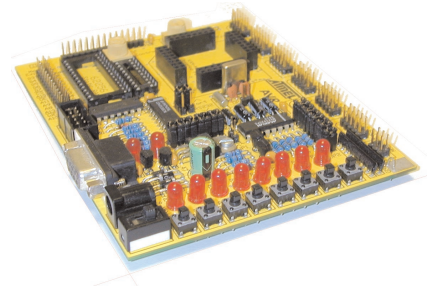
# STK300

# AVR<sup>®</sup>

Complete development system for the Atmel range of ATmega microcontrollers.

## STK300

The STK300 is a complete low-cost system for the Atmel Mega AVR range of FLASH 8-bit in-system programmable RISC microprocessors. The ATmega gives you all the benefits of the AVR plus loads of memory. Included in the Kit is an Application Builder and an editor to simplify code development. Everything is provided for you to develop ATmega designs in a fast track environment.



## STK300 board

The STK300 is an optimally designed platform for taking your ATmega design from conception to realisation. The board is populated with switches, LED's, an RS232 port, ADC, port headers and low current dual rail supplies for external Op amps.

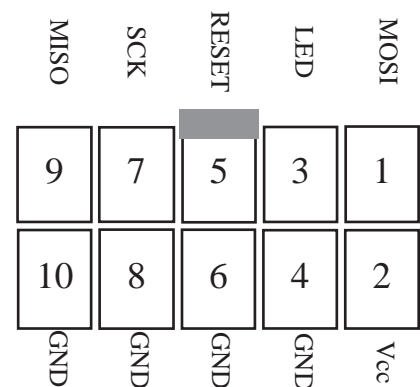
A 14-pin connector for standard LCD's, including power and contrast adjustment, is also fitted. The board is prepared for drop-in external RAM connection, with sockets for the Address Latch chip and RAM plus dip header for external memory mapped devices.

Onboard brown out detection and adjustable voltage reference are included. The board has a full range of ports for development purposes.

As the Mega AVR's are only available in surface mount versions, we have mounted the device on a daughter board using standard 0.1" pin headers. This will make your prototype development much simpler. This daughter board is also available separately.

## ISP

The system uses a parallel port programmer with 10-way ribbon cable using Kanda standard connection as adopted by Atmel and the ISP software is now an industry standard. The emulation included in the package uses the same hardware so you do not have to worry about cable changes. The ISP is project based to help with file storage and version control.



## Kanda.com

Kanda Systems UK Office  
17/18 Glanyrafon Enterprise Park, Aberystwyth,  
Ceredigion. SY23 3JQ. UK

Logical Devices US Office  
5758 Lamar St, Arvada,  
CO 80002, USA.

Order Code:

NSTK300

Tel: +44 (0)1970 621 030, Fax: +44 (0)1970 621 040

Email: sales@kanda.com

Web: www.kanda.com

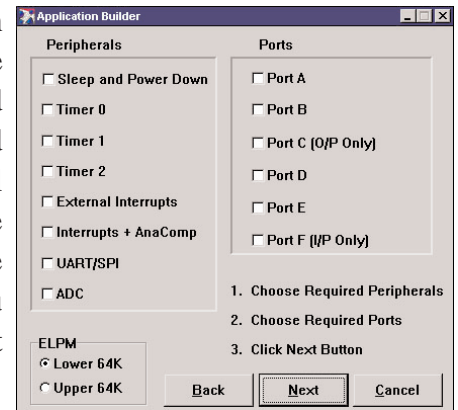
Tel: 303 456 2060, Fax: 303 456 2404

Email: sales@logicaldevices.com

Web: www.logicaldevices.com

## Application Builder

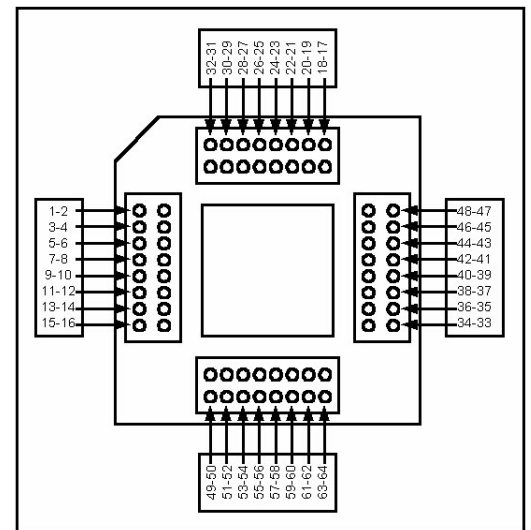
Built-in to the development environment, the Application Builder uses simple wizards to create all your setup code including ports, timers, UART, ADC, SPI, watchdog and interrupts. Stack pointer, External SRAM access and other device features can also be set. This powerful feature gives you instant source code templates and code examples. It also reduces the need to read all the datasheets before you start your development, saving you time and money. (The application builder is a 16-bit windows application)



## Daughter Board

AVR Mega devices mounted on daughter boards with 0.1" pin headers are available from us.

Product	Part Number
STK300+ Kit	NSTK300
Mounted ATmega128	KANMEGDEV5
Mounted ATmega128L	KANMEGDEV3



## Accessories

### Description

Power Supply - 3 versions  
RAM Chip set  
Intelligent 16 x 2 LCD Module

### Part Number

STKPSU-UK, STKPSU-EU, STKPSU-US  
STKP51-RAM  
570910-PM

For support for other AVR devices, see NSTK200

® AVR is the registered trade mark of Atmel Corporation, Orchard Parkway, San Jose, CA

## Related Products

Do also check out our AVR PSI product. This offers vastly superior programming times compared to the AVR ISP.

For more information on our complete range of AVR products including C Compilers, Basic Compilers, Development Boards and Field Programming Solutions please contact our sales department or your local distributor.

**Kanda.com**