

**BASE FLANGE**

Zinc-plated die-cast zinc alloy with two holes for assembly with countersunk head screws.

**PLUNGER**

Black-oxide steel with hardened end.  
Suggested tolerance for matching hole = H7.

**KNOB**

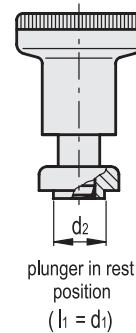
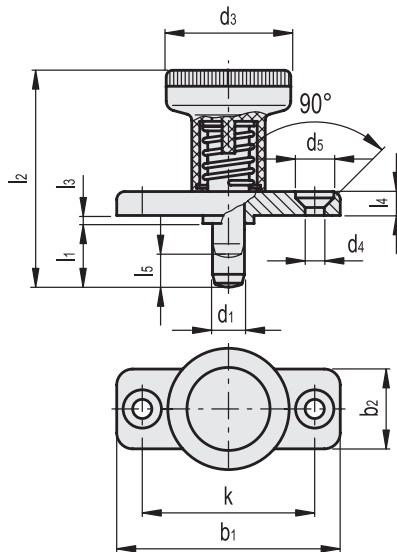
High-resilience polyamide based (PA) technopolymer, black colour, matte finish.

**FEATURES AND APPLICATIONS**

GN 608.1 indexing plungers with rest position have compact dimensions and are used on thin sheets and where the plunger needs to be locked in the retracted position.



- 1
- 2
- 3
- 4
- 5
- 6
- 7
- 8
- 9
- 10
- 11
- 12
- 13
- 14
- 15
- 16
- 17
- 18



Code	Description	Dimensions														Spring preload [N]	Spring max load [N]	Axial holding force [N]	⚖️
		d1 Plunger Hole H7	d2-0.02-0.04 -0.1	d3	d4	d5	b1	b2	k	l1	l2	l3-0.15	l4	l5					
GN.35091	GN 608.1-6-6	6	10	25	4.3	8.3	40	18	30	6	37	2.5	4.5	6	8.5	22	400	36	
GN.35093	GN 608.1-6-14	6	10	25	4.3	8.3	40	18	30	14	45	2.5	4.5	6	8.5	22	400	42	
GN.35092	GN 608.1-8-8	8	12	31	5.3	10.4	46	20	34	8	44	2.5	5.5	8	15.5	28	500	58	
GN.35094	GN 608.1-8-18	8	12	31	5.3	10.4	46	20	34	18	54	2.5	5.5	8	15.5	28	500	66	