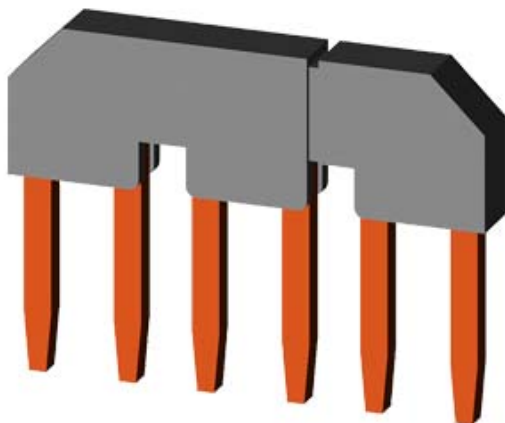






PARALLEL CONNECTION W/O TERMINAL, 3-POLE
FOR 3RT101., SCREW CONNECTION
(REPLACEMENT FOR 3TX4490-2C, FOR 3TF2, 3TK2)



General technical data:	
product brand name	SIRIUS
Product designation	Connection jumper
Design of the product	Parallel switching connection for contactors S00
Size of contactor	S00

Installation/ mounting/ dimensions:	
Mounting type	screw fixing

Certificates/ approvals:	
--------------------------	--

General Product Approval			Declaration of Conformity	Test Certificates	Shipping Approval
 CSA	 UL		 EG-Konf.	Special Test Certificate	 ABS

Shipping Approval				other	
 BUREAU VERITAS	 GL	 PRS	 RINA	Confirmation	Environmental Confirmations

other
other

Further information

Information- and Downloadcenter (Catalogs, Brochures,...)

<http://www.siemens.com/industrial-controls/catalogs>

Industry Mall (Online ordering system)

<http://www.siemens.com/industrymall>

Cax online generator

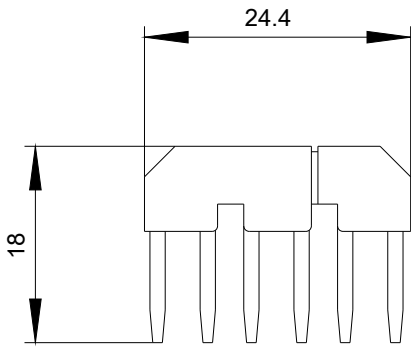
<http://support.automation.siemens.com/WW/CAXorder/default.aspx?lang=en&mlfb=3RT19164BA31>

Service&Support (Manuals, Certificates, Characteristics, FAQs,...)

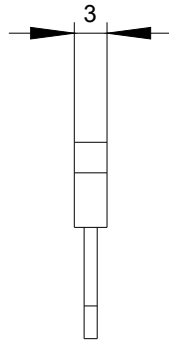
<http://support.automation.siemens.com/WW/view/en/3RT19164BA31/all>

Image database (product images, 2D dimension drawings, 3D models, device circuit diagrams, EPLAN macros, ...)

<http://www.automation.siemens.com/bilddb/index.aspx?attID9=3RT19164BA31&lang=en>



last modified:



09.03.2015