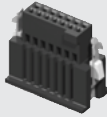
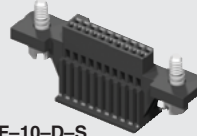




ISDF-07-D-M



ISDF-10-D-S



CC03R-2830-01-G

(1,27 mm) .050"

ISDF, CC03R, CC03M, TFM SERIES

# DISCRETE WIRE COMPONENTS & TOOLING

## SPECIFICATIONS

For complete specifications see [www.samtec.com?ISDF](http://www.samtec.com?ISDF), [www.samtec.com?CC03R](http://www.samtec.com?CC03R) or [www.samtec.com?CC03M](http://www.samtec.com?CC03M)

## RECOGNITIONS

For complete scope of recognitions see [www.samtec.com/quality](http://www.samtec.com/quality)



## TOOLING

- Hand tool: CAT-HT-203-2830-12
- Clamp for mounting hand tool to work table: CAT-HT-MNT-01
- Mini Applicator: CAT-MA-203-2830-XX-01

Note: Some lengths, styles and options are non-standard, non-returnable.

TYPE	POSITIONS PER ROW	ROW OPTION	OPTION	TYPE	WIRE GAUGE	01	PLATING
ISDF = Housing	-03, -04, -05, -07, -10, -15, -20, -25, -40, -50 (Standard sizes)	-S = Single Row -D = Double Row	-M = Metal Retention Latch -S = Screw Down (-D only)	CC03R = Contact, Full Reel (35,000 Parts per Reel) CC03M = Contact, Mini Reel (5,000 Parts per Reel)	-2830 = 28 to 30 AWG		-GF = Gold flash on contact -G = 10µ" (0,25 µm) Gold on contact

Mates with: SFSD(T), SFSS(T)

## SPECIFICATIONS

For complete specifications and recommended PCB layouts see [www.samtec.com?TFM](http://www.samtec.com?TFM)

**Insulator Material:** Black Liquid Crystal Polymer  
**Terminal Material:** Phosphor Bronze  
**Plating:** Au or Sn over 50µ" (1,27 µm) Ni  
**Voltage Rating:** 250 VAC mated with SFM  
**Operating Temp Range:** -55°C to +125°C  
**RoHS Compliant:** Yes

**Processing:**  
**Lead-Free Solderable:** Yes  
**SMT Lead Coplanarity:** (0,10 mm) .004" max (05-25) (0,15 mm) .006" max (30-50)

## RECOGNITIONS

For complete scope of recognitions see [www.samtec.com/quality](http://www.samtec.com/quality)



TFM	1	NO. PINS PER ROW	LEAD STYLE	PLATING OPTION	ROW OPTION	OPTION
		03, 04, 05, 07, 10, 15, 20, 25, 40, 50	-01 = Through-hole -02 = Surface Mount	-L = 15µ" (0,38 µm) Gold on post, Matte Tin on tail	-S = Single Row -D = Double Row	-DS = Dual Screw Down for (1,60 mm) .062" PCB (05, 07, 10, 15, 20, 25, 40 positions only) (Requires -D row option) (Mates with SFSD/SFSDT -SS and -DS option only) -WT = Weld Tab (Mates to SFSS/SFSD -SR and -DR option only) (05, 07, 10, 15, 20, 25, 40, 50 positions only)