

# Insulating boots for use with IEC inlet filters

Approvals & Compliances



**ROHS**

## Technical specifications

**Operation temperature**

-10°C to 60°C

Material thickness

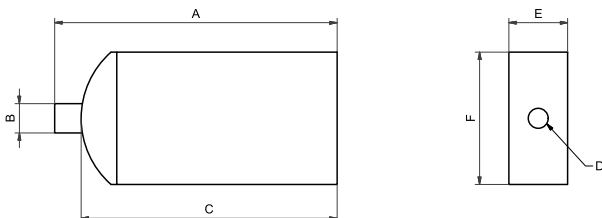
## Features and benefits

There are a full range of insulating boots available from Schaffner EMC that provide a physical cover for the exposed terminals on the back of IEC Inlet Filters. These boots fit the simplest non-fused and unswitched style up to the fully fused and switched IEC filtered inlet. The boots are made from a durable black PVC material that conforms to UL94-V1 flammability requirements. The boots slip easily over the back of the filter and reduce the risk of electrical shock to maintenance personnel whilst protecting the filter from environmental hazard such as the ingress of dust and moisture.

## Filter selection table

Part Number	Dimensions (mm)						IEC	IEC with fuse	Filter Application IEC with switch/fuse Voltage selector
	A	B	C	D	E	F			
IB1 - 06	55	9	40	6	20	30	yes		
IB2 - 06	60	9	45	6	30	35		yes	
IB3 - 06	85	9	75	6	30	60			yes
IB3 - 10	80	13	60	10	30	60			yes

## Dimensions



## Reference guide to insulating boots

IEC Inlets IB1 - 06

IEC Inlets with fuses IB2 - 06

IEC Inlets with fuses and switchers or voltage selector IB3 - 06

IEC Inlets with fuses and switches or voltage selector IB3 - 10

FN 9222, FN 9233, FN 9244, FN 9255

FN 261, FN 9260, FN 9262, FN 9264, FN 9266

FN 390, FN 393, FN 394, FN 1393, FN 1394

FN 280, FN 281, FN 282, FN 283, FN 284, FN 285, FN 286