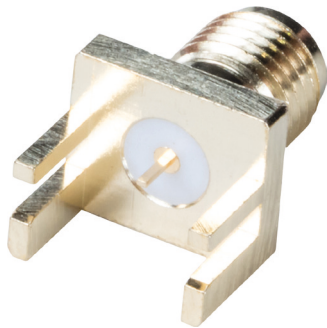


# HF Connectors



## Male Connector SMA 50 $\Omega$ , straight

---



### SPECIFICATION:

Mounting	PCB
Housing Material	Brass/Gold-plated
Series	SMA
Frequency	18 GHz
Gender	Male
Insulation Material	Teflon
Impedance	50 $\Omega$
Connector Design	Straight
Contacts	Beryllium Copper/Gold-plated
VSWR	1.23 max. @ 18 GHz
Centre Contact	1.91 (Tolerance 0.1)

