



MATERIAL

Zinc-plated steel (class 5.8 - tensile strength 500 N/mm²).
Ultrasonically checked.



STANDARD EXECUTIONS

- **DIN 908-A:** without packing ring.
- **DIN 908-AC:** with copper flat packing ring (DIN 7603-CU).
- **DIN 908-AA:** with aluminium flat packing ring (DIN 7603-AL).



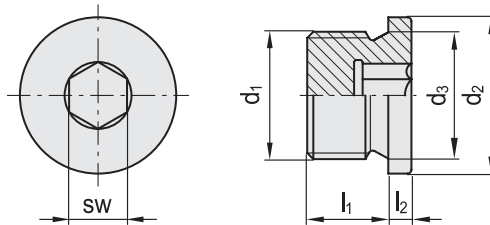
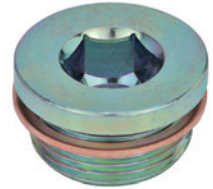
FEATURES AND APPLICATIONS

The packing rings in metal, copper or aluminium, allow the use of DIN 908 plugs also on high temperature applications.
Not advisable to use when there is a frequent screwing / unscrewing of the plug, for the possibility of deformation of the metal packing ring.



SPECIAL EXECUTION ON REQUEST

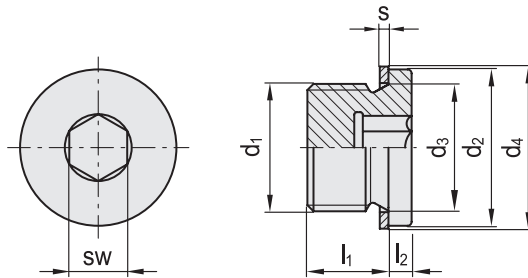
Stainless steel executions.



DIN 908-A

Code	Description	d1	d2 h14	d3	l1 ±0.2	l2 +0.5	sw	△
GN.90701	DIN 908-ST-M8x1-A	M8x1	12	8.3	8	3	4	4
GN.90706	DIN 908-ST-M10x1-A	M10x1	14	10.3	8	3	5	6
GN.90711	DIN 908-ST-M12x1.5-A	M12x1.5	17	12.3	12	3	6	11
GN.90716	DIN 908-ST-M14x1.5-A	M14x1.5	19	14.3	12	3	6	16
GN.90721	DIN 908-ST-M16x1.5-A	M16x1.5	21	16.3	12	3	8	20
GN.90726	DIN 908-ST-M18x1.5-A	M18x1.5	23	18.3	12	4	8	29
GN.90731	DIN 908-ST-M20x1.5-A	M20x1.5	25	20.3	14	4	10	38
GN.90736	DIN 908-ST-M22x1.5-A	M22x1.5	27	22.3	14	4	10	42
GN.90741	DIN 908-ST-M24x1.5-A	M24x1.5	29	24.3	14	4	12	53
GN.90746	DIN 908-ST-M26x1.5-A	M26x1.5	31	26.3	16	4	12	73
GN.90751	DIN 908-ST-M27x2-A	M27x2	32	27.3	16	4	12	75
GN.90756	DIN 908-ST-M30x1.5-A	M30x1.5	36	30.3	16	4	17	84
GN.90761	DIN 908-ST-M33x2-A	M33x2	39	33.3	16	5	17	119
GN.90766	DIN 908-ST-M42x2-A	M42x2	49	42.3	16	5	22	187
GN.90771	DIN 908-ST-M48x2-A	M48x2	55	48.3	16	5	24	240
GN.90781	DIN 908-ST-G1/8-A	G 1/8	14	10	8	3	5	6
GN.90786	DIN 908-ST-G1/4-A	G 1/4	18	13.4	12	3	6	14
GN.90791	DIN 908-ST-G3/8-A	G 3/8	22	17	12	3	8	22
GN.90796	DIN 908-ST-G1/2-A	G 1/2	26	21.3	14	4	10	41
GN.90801	DIN 908-ST-G3/4-A	G 3/4	32	26.7	16	4	12	53
GN.90806	DIN 908-ST-G1-A	G 1	39	33.5	16	5	17	119
GN.90811	DIN 908-ST-G1 1/4-A	G 1 1/4	49	42.2	16	5	22	185
GN.90816	DIN 908-ST-G1 1/2-A	G 1 1/2	55	48.1	16	5	24	237

Accessories for hydraulic systems



DIN 908-AC

Code	Description	d1	d2 h14	d3	d4	l1 ±0.2	l2 +0.5	s	sw	⚖️
GN.90703	DIN 908-ST-M8x1-AC	M8x1	12	8.3	11.5	8	3	1	4	5
GN.90708	DIN 908-ST-M10x1-AC	M10x1	14	10.3	13.5	8	3	1	5	7
GN.90713	DIN 908-ST-M12x1.5-AC	M12x1.5	17	12.3	16	12	3	1.5	6	12
GN.90718	DIN 908-ST-M14x1.5-AC	M14x1.5	19	14.3	18	12	3	1.5	6	17
GN.90723	DIN 908-ST-M16x1.5-AC	M16x1.5	21	16.3	20	12	3	1.5	8	21
GN.90728	DIN 908-ST-M18x1.5-AC	M18x1.5	23	18.3	22	12	4	1.5	8	30
GN.90733	DIN 908-ST-M20x1.5-AC	M20x1.5	25	20.3	24	14	4	1.5	10	40
GN.90738	DIN 908-ST-M22x1.5-AC	M22x1.5	27	22.3	27	14	4	1.5	10	44
GN.90743	DIN 908-ST-M24x1.5-AC	M24x1.5	29	24.3	29	14	4	2	12	56
GN.90748	DIN 908-ST-M26x1.5-AC	M26x1.5	31	26.3	31	16	4	2	12	76
GN.90753	DIN 908-ST-M27x2-AC	M27x2	32	27.3	32	16	4	2	12	79
GN.90758	DIN 908-ST-M30x1.5-AC	M30x1.5	36	30.3	36	16	4	2	17	88
GN.90763	DIN 908-ST-M33x2-AC	M33x2	39	33.3	39	16	5	2	17	124
GN.90768	DIN 908-ST-M42x2-AC	M42x2	49	42.3	49	16	5	2	22	194
GN.90773	DIN 908-ST-M48x2-AC	M48x2	55	48.3	55	16	5	2	24	248
GN.90783	DIN 908-ST-G1/8-AC	G 1/8	14	10	13.5	8	3	1	5	7
GN.90788	DIN 908-ST-G1/4-AC	G 1/4	18	13.4	18	12	3	1.5	6	15
GN.90793	DIN 908-ST-G3/8-AC	G 3/8	22	17	21	12	3	1.5	8	24
GN.90798	DIN 908-ST-G1/2-AC	G 1/2	26	21.3	26	14	4	1.5	10	43
GN.90803	DIN 908-ST-G3/4-AC	G 3/4	32	26.7	32	16	4	2	12	56
GN.90808	DIN 908-ST-G1-AC	G 1	39	33.5	39	16	5	2	17	124
GN.90813	DIN 908-ST-G1 1/4-AC	G 1 1/4	49	42.2	49	16	5	2	22	192
GN.90818	DIN 908-ST-G1 1/2-AC	G 1 1/2	55	48.1	55	16	5	2	24	244



Accessories for hydraulic systems



1



2



3



4



5



6



7



8



9



10



11



12



13



14



15



16



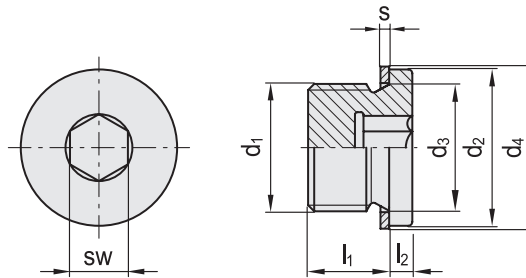
17



18



Accessories for hydraulic systems



DIN 908-AA

Code	Description	d1	d2h14	d3	d4	l1 ±0.2	l2+0.5	s	sw	⚖️
GN.90702	DIN 908-ST-M8x1-AA	M8x1	12	8.3	11.5	8	3	1	4	5
GN.90707	DIN 908-ST-M10x1-AA	M10x1	14	10.3	13.5	8	3	1	5	7
GN.90712	DIN 908-ST-M12x1.5-AA	M12x1.5	17	12.3	16	12	3	1.5	6	12
GN.90717	DIN 908-ST-M14x1.5-AA	M14x1.5	19	14.3	18	12	3	1.5	6	17
GN.90722	DIN 908-ST-M16x1.5-AA	M16x1.5	21	16.3	20	12	3	1.5	8	21
GN.90727	DIN 908-ST-M18x1.5-AA	M18x1.5	23	18.3	22	12	4	1.5	8	30
GN.90732	DIN 908-ST-M20x1.5-AA	M20x1.5	25	20.3	24	14	4	1.5	10	40
GN.90737	DIN 908-ST-M22x1.5-AA	M22x1.5	27	22.3	27	14	4	1.5	10	44
GN.90742	DIN 908-ST-M24x1.5-AA	M24x1.5	29	24.3	29	14	4	2	12	56
GN.90747	DIN 908-ST-M26x1.5-AA	M26x1.5	31	26.3	31	16	4	2	12	76
GN.90752	DIN 908-ST-M27x2-AA	M27x2	32	27.3	32	16	4	2	12	79
GN.90757	DIN 908-ST-M30x1.5-AA	M30x1.5	36	30.3	36	16	4	2	17	88
GN.90762	DIN 908-ST-M33x2-AA	M33x2	39	33.3	39	16	5	2	17	124
GN.90767	DIN 908-ST-M42x2-AA	M42x2	49	42.3	49	16	5	2	22	194
GN.90772	DIN 908-ST-M48x2-AA	M48x2	55	48.3	55	16	5	2	24	248
GN.90782	DIN 908-ST-G1/8-AA	G 1/8	14	10	13.5	8	3	1	5	7
GN.90787	DIN 908-ST-G1/4-AA	G 1/4	18	13.4	18	12	3	1.5	6	15
GN.90792	DIN 908-ST-G3/8-AA	G 3/8	22	17	21	12	3	1.5	8	24
GN.90797	DIN 908-ST-G1/2-AA	G 1/2	26	21.3	26	14	4	1.5	10	43
GN.90802	DIN 908-ST-G3/4-AA	G 3/4	32	26.7	32	16	4	2	12	56
GN.90807	DIN 908-ST-G1-AA	G 1	39	33.5	39	16	5	2	17	124
GN.90812	DIN 908-ST-G11/4-AA	G 1 1/4	49	42.2	49	16	5	2	22	192
GN.90817	DIN 908-ST-G11/2-AA	G 1 1/2	55	48.1	55	16	5	2	24	244