

MATERIAL

Hardened AISI 431 stainless steel.

ELASTIC ELEMENT

Polyurethane (PUR).

STANDARD EXECUTIONS

AISI 420C nickel-plated stainless steel ball:

- **GN 709.25-B**: ball with smooth and flat face, not reversible.
- **GN 709.25-BR**: ball with smooth and flat face, not reversible, with automatic return.

FEATURES AND APPLICATIONS

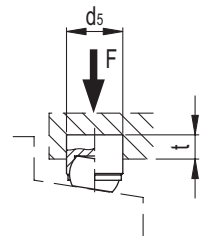
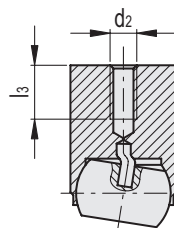
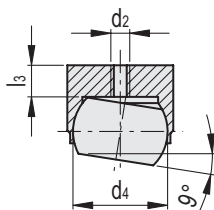
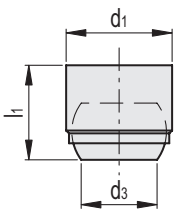
GN 709.25 clamping elements are used as mobile supports or for clamping workpieces.

Maximum inclination of the ball plane = 9°.



GN 709.25-B

GN 709.25-BR



GN 709.25-B



Code	Description	d1 n6	d2	d3	d4	l1 ±0.02	l3	d5 H7	t min.	Max. static load F [kN]	⚖
GN.76301	GN 709.25-12-B	12	M3	7.2	10	11	3.2	12	6	10	8
GN.76311	GN 709.25-18-B	18	M4	10.5	16	17	4	18	8	25	28
GN.76321	GN 709.25-28-B	28	M5	20	25	25	5.5	28	13	90	107

GN 709.25-BR



Code	Description	d1 n6	d2	d3	d4	l1 ±0.02	l3	d5 H7	t min.	Max. static load F [kN]	⚖
GN.76302	GN 709.25-12-BR	12	M3	7.2	10	17	3.2	12	12	10	16
GN.76312	GN 709.25-18-BR	18	M4	10.5	16	23	4	18	14	25	40
GN.76322	GN 709.25-28-BR	28	M5	20	25	34	6	28	22	90	150

Standard machine parts