

MIRO 6.2 TIMER OFF-DELAY

IN: 24 VDC - OUT: 250 VAC/DC / 6A

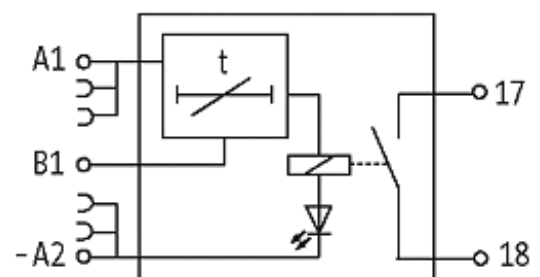
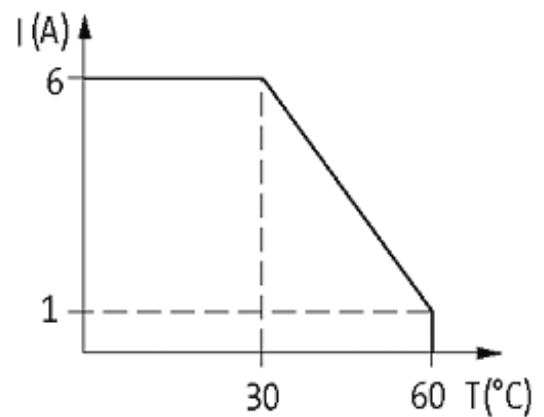
Relay output

Switch-off delay: 0.1...10 s

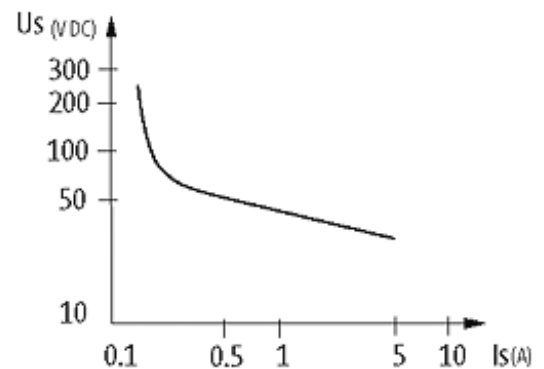
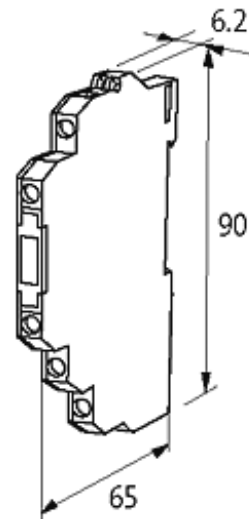
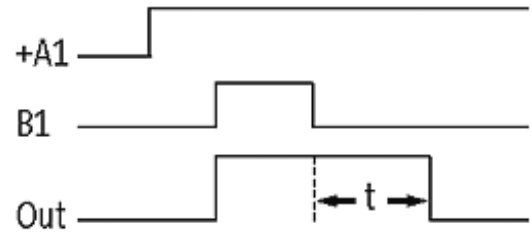
Screw terminals

[Link to Product](#)

Illustration

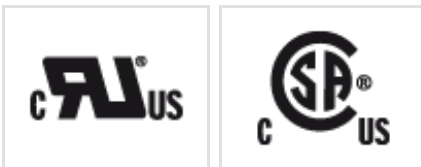


stay connected



Product may differ from Image

Approvals



Utilization category

| | |
|-------|---|
| AC-12 | 6 A (24/110/230 V AC) |
| AC-15 | 3 A (24/110/230 V AC) |
| DC-13 | 1 A (24 V DC); 0.2 A (110 V DC); 0.1 A (230 V DC) |

Input

| | |
|---------------|-----------------------------|
| Input voltage | 24 V DC (+10 -15 %) input A |
|---------------|-----------------------------|

The information in this brochure has been compiled with the utmost care.

Liability for the correctness completeness and topicality of the information is restricted to gross negligence. Version: 05/15

Murrelektronik GmbH | Falkenstraße 3, 71570 Oppenweiler | Fon +49 (71 91) 47-0, Fax +49 (71 91) 47-491000 | shop@murrelektronik.de | shop.murrelektronik.de

| | |
|-----------------|-----------------------------|
| Input current | 20 mA (input A) |
| Control voltage | 24 V DC (+10 -15 %) input B |
| Control current | 5 mA (input B) |

General data

| | |
|------------------------|--|
| Mech./ elect. life | 20.000.000 switching cycles/load dependent |
| Test isolation voltage | 4 kV; safe separation (EN 60947-1) |
| Mounting method | DIN-rail mountable (EN 60715) |
| Temperature range | 0...+55 °C |
| Dimensions H x W x D | 90x6.2x65 mm |

Output

| | |
|--------------------------------------|----------------------|
| Output voltage | max. 250 V AC/DC |
| Output current | max. 6 A |
| Min. load current | 100 mA (12 V DC) |
| Output rating | max. 1500 VA/120 W |
| Switching frequency | max. 10 Hz |
| Contact material | Ag Sn O ₂ |
| Energize/release/contact bounce time | 10/15/1.5 ms |

Commercial data

| | |
|------------------------|----------|
| country of origin | CZ |
| customs tariff number | 85364900 |
| minimum order quantity | 1 |