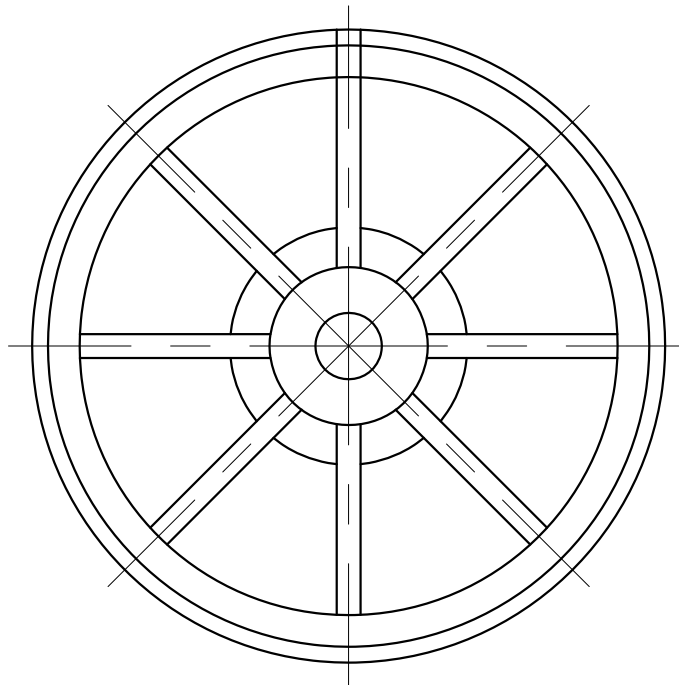
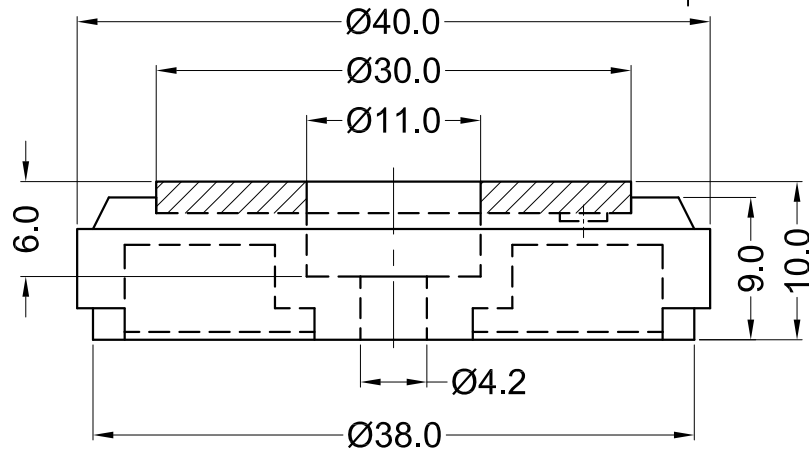


DO NOT SCALE DRAWING



REVISIONS				
ZONE	REV.	DESCRIPTION	DATE	APPROVED

Part No.	PAD Material	PAD SIZE	Finish
TRBF-1001	EVA	2T*29.5*11.0	/

Notes:

- 1.Material:Feet ABS UL94 HB;
- 2.Color:Feet Black;
- 3.RoHS Compliant;



DESIGN RIGHT. TR FASTENINGS LTD. 2003
 UNDER NO CIRCUMSTANCES MUST THIS
 DRAWING BE COPIED OR DISCLOSED.
 WITHOUT FIRST OBTAINING WRITTEN
 AUTHORITY.

UNLESS OTHERWISE SPECIFIED:
 DIMENSIONS ARE IN MILLIMETERS.
 SURFACE FINISH:
 TOLERANCES:
 $L \leq 4 = \pm 0.1$ $4 < L \leq 15 = \pm 0.2$
 $15 < L \leq 50 = \pm 0.3$ $50 < L \leq 100 = \pm 0.4$

NAME	DATE
DRAWN MARTIN ELLIOTT	21/11/2017
CHK'D	
APP'VD	

CUSTOMER PART NO.

MATERIAL

N/A

HEAT TREATMENT

N/A

FINISH

N/A

TITLE

SOFT FAST FOOT SPECIAL

DWG NO.

TRBF-1001

A4

