

- 1
- 2
- 3
- 4
- 5
- 6
- 7
- 8
- 9
- 10
- 11
- 12
- 13
- 14
- 15
- 16
- 17
- 18

MATERIAL

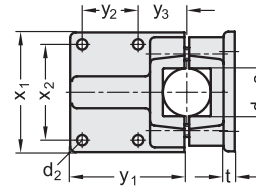
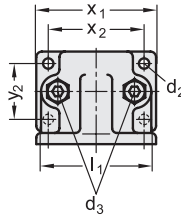
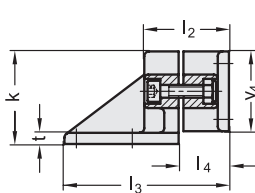
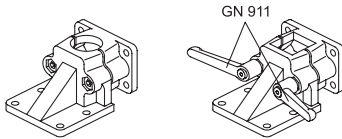
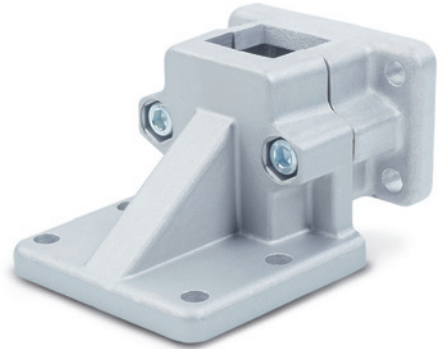
Aluminium, matte finish.
AISI 304 stainless steel screws and nuts.

STANDARD EXECUTIONS

- **GN 171-BL**: natural aluminium.
- **GN 171-SW**: aluminium, epoxy resin coating, RAL 9005 black colour.

FEATURES AND APPLICATIONS

The assembly hole of GN 171 connecting clamps allows an excellent match with tubes GN 990 (see page 1778).
The clamping screws d₃ may be replaced by clamping kits GN 911 (see page 1782).



GN 171-BL

Code	Description	d1 Hole	s Square hole	d2	d3	k	l1	l2	l3	l4	t	x1	x2	y1	y2	y3	y4	d3 Clamping kit	⚖️
GN.50611	GN 171-B20-2-BL	20	-	7	M8	58	69	53	103	30	7	75	60	72	35	30	50	GN 911-M8-45	344
GN.50631	GN 171-B25-2-BL	25	-	7	M8	58	69	53	103	30	7	75	60	72	35	30	50	GN 911-M8-45	337
GN.50651	GN 171-B30-2-BL	30	-	7	M8	58	69	53	103	30	7	75	60	72	35	30	50	GN 911-M8-45	330
GN.50671	GN 171-B40-2-BL	40	-	11	M10	91	98	82	156	47	14	115	90	108	50	45	76	GN 911-M10-70	1014
GN.50691	GN 171-B42-2-BL	42	-	11	M10	91	98	82	156	47	14	115	90	108	50	45	76	GN 911-M10-70	995
GN.50711	GN 171-B45-2-BL	45	-	11	M10	91	98	82	156	47	14	115	90	108	50	45	76	GN 911-M10-70	982
GN.50731	GN 171-B48-2-BL	48	-	11	M10	91	98	82	156	47	14	115	90	108	50	45	76	GN 911-M10-70	973
GN.50751	GN 171-B50-2-BL	50	-	11	M10	91	98	82	156	47	14	115	90	108	50	45	76	GN 911-M10-70	959
GN.50811	GN 171-V20-2-BL	-	20x20	7	M8	58	69	53	103	30	7	75	60	72	35	30	50	GN 911-M8-45	343
GN.50831	GN 171-V25-2-BL	-	25x25	7	M8	58	69	53	103	30	7	75	60	72	35	30	50	GN 911-M8-45	326
GN.50851	GN 171-V30-2-BL	-	30x30	7	M8	58	69	53	103	30	7	75	60	72	35	30	50	GN 911-M8-45	316
GN.50871	GN 171-V40-2-BL	-	40x40	11	M10	91	98	82	156	47	14	115	90	108	50	45	76	GN 911-M10-70	981
GN.50891	GN 171-V45-2-BL	-	45x45	11	M10	91	98	82	156	47	14	115	90	108	50	45	76	GN 911-M10-70	958
GN.50911	GN 171-V50-2-BL	-	50x50	11	M10	91	98	82	156	47	14	115	90	108	50	45	76	GN 911-M10-70	918

GN 171-SW

GN.50616	GN 171-B20-2-SW	20	-	7	M8	58	69	53	103	30	7	75	60	72	35	30	50	GN 911-M8-45	344
GN.50636	GN 171-B25-2-SW	25	-	7	M8	58	69	53	103	30	7	75	60	72	35	30	50	GN 911-M8-45	337
GN.50656	GN 171-B30-2-SW	30	-	7	M8	58	69	53	103	30	7	75	60	72	35	30	50	GN 911-M8-45	330
GN.50676	GN 171-B40-2-SW	40	-	11	M10	91	98	82	156	47	14	115	90	108	50	45	76	GN 911-M10-70	1014
GN.50696	GN 171-B42-2-SW	42	-	11	M10	91	98	82	156	47	14	115	90	108	50	45	76	GN 911-M10-70	995
GN.50716	GN 171-B45-2-SW	45	-	11	M10	91	98	82	156	47	14	115	90	108	50	45	76	GN 911-M10-70	982
GN.50736	GN 171-B48-2-SW	48	-	11	M10	91	98	82	156	47	14	115	90	108	50	45	76	GN 911-M10-70	973
GN.50756	GN 171-B50-2-SW	50	-	11	M10	91	98	82	156	47	14	115	90	108	50	45	76	GN 911-M10-70	959
GN.50816	GN 171-V20-2-SW	-	20x20	7	M8	58	69	53	103	30	7	75	60	72	35	30	50	GN 911-M8-45	343
GN.50836	GN 171-V25-2-SW	-	25x25	7	M8	58	69	53	103	30	7	75	60	72	35	30	50	GN 911-M8-45	326
GN.50856	GN 171-V30-2-SW	-	30x30	7	M8	58	69	53	103	30	7	75	60	72	35	30	50	GN 911-M8-45	316
GN.50876	GN 171-V40-2-SW	-	40x40	11	M10	91	98	82	156	47	14	115	90	108	50	45	76	GN 911-M10-70	981
GN.50896	GN 171-V45-2-SW	-	45x45	11	M10	91	98	82	156	47	14	115	90	108	50	45	76	GN 911-M10-70	958
GN.50916	GN 171-V50-2-SW	-	50x50	11	M10	91	98	82	156	47	14	115	90	108	50	45	76	GN 911-M10-70	918

Connecting clamps