



Figure similar

CONTACTOR, 200KW/400V/AC-3 AC(40...60HZ)/DC
OPERATION UC 42-48V AUXILIARY CONTACTS
2NO+2NC 3-POLE, SIZE S12 BAR CONNECTIONS
CONVENT. OPERATING MECHANISM SCREW
TERMINAL

| | |
|---------------------|-----------------|
| product brand name | SIRIUS |
| Product designation | power contactor |

General technical data:

| | | |
|---|----|------------|
| Insulation voltage | | |
| <ul style="list-style-type: none"> Rated value | V | 1 000 |
| Degree of pollution | | 3 |
| Surge voltage resistance Rated value | kV | 8 |
| Mechanical service life (switching cycles) | | |
| <ul style="list-style-type: none"> of the contactor typical | | 10 000 000 |
| <ul style="list-style-type: none"> of the contactor with added electronics-compatible auxiliary switch block typical | | 5 000 000 |
| <ul style="list-style-type: none"> of the contactor with added auxiliary switch block typical | | 10 000 000 |
| Thermal short-time current restricted to 10 s | A | 3 200 |
| Protection class IP | | |
| <ul style="list-style-type: none"> on the front | | IP00 |
| <ul style="list-style-type: none"> of the terminal | | IP00 |
| Equipment marking | | |
| <ul style="list-style-type: none"> acc. to DIN EN 61346-2 | | Q |
| <ul style="list-style-type: none"> acc. to DIN EN 81346-2 | | Q |

Main circuit:

| | | |
|---|--|---|
| Number of poles for main current circuit | | 3 |
| Number of NC contacts for main contacts | | 0 |
| Number of NO contacts for main contacts | | 3 |
| Operating current | | |

| | | |
|---|----|---------|
| <ul style="list-style-type: none"> • at AC-1 <ul style="list-style-type: none"> — at 400 V at ambient temperature 40 °C Rated value — up to 690 V at ambient temperature 40 °C Rated value — up to 690 V at ambient temperature 60 °C Rated value • at AC-3 <ul style="list-style-type: none"> — at 400 V Rated value — at 690 V Rated value • at AC-4 at 400 V Rated value | A | 430 |
| <ul style="list-style-type: none"> • at AC-1 <ul style="list-style-type: none"> — at 400 V at ambient temperature 40 °C Rated value — up to 690 V at ambient temperature 40 °C Rated value — up to 690 V at ambient temperature 60 °C Rated value • at AC-3 <ul style="list-style-type: none"> — at 400 V Rated value — at 690 V Rated value • at AC-4 at 400 V Rated value | A | 430 |
| <ul style="list-style-type: none"> • at AC-1 <ul style="list-style-type: none"> — up to 690 V at ambient temperature 40 °C Rated value — up to 690 V at ambient temperature 60 °C Rated value • at AC-3 <ul style="list-style-type: none"> — at 400 V Rated value — at 690 V Rated value • at AC-4 at 400 V Rated value | A | 400 |
| <ul style="list-style-type: none"> • at AC-3 <ul style="list-style-type: none"> — at 400 V Rated value — at 690 V Rated value • at AC-4 at 400 V Rated value | A | 400 |
| <ul style="list-style-type: none"> • at AC-4 at 400 V Rated value | A | 350 |
| Operating current with 1 current path | | |
| <ul style="list-style-type: none"> • at DC-1 <ul style="list-style-type: none"> — at 24 V Rated value — at 110 V Rated value • at DC-3 at DC-5 <ul style="list-style-type: none"> — at 24 V Rated value — at 110 V Rated value | A | 400 |
| <ul style="list-style-type: none"> • at DC-1 <ul style="list-style-type: none"> — at 110 V Rated value | A | 33 |
| <ul style="list-style-type: none"> • at DC-3 at DC-5 <ul style="list-style-type: none"> — at 24 V Rated value | A | 400 |
| <ul style="list-style-type: none"> • at DC-3 at DC-5 <ul style="list-style-type: none"> — at 110 V Rated value | A | 3 |
| Operating current with 2 current paths in series | | |
| <ul style="list-style-type: none"> • at DC-1 <ul style="list-style-type: none"> — at 24 V Rated value — at 110 V Rated value • at DC-3 at DC-5 <ul style="list-style-type: none"> — at 110 V Rated value — at 24 V Rated value | A | 400 |
| <ul style="list-style-type: none"> • at DC-1 <ul style="list-style-type: none"> — at 110 V Rated value | A | 400 |
| <ul style="list-style-type: none"> • at DC-3 at DC-5 <ul style="list-style-type: none"> — at 110 V Rated value | A | 400 |
| <ul style="list-style-type: none"> • at DC-3 at DC-5 <ul style="list-style-type: none"> — at 24 V Rated value | A | 400 |
| Operating current with 3 current paths in series | | |
| <ul style="list-style-type: none"> • at DC-1 <ul style="list-style-type: none"> — at 24 V Rated value — at 110 V Rated value • at DC-3 at DC-5 <ul style="list-style-type: none"> — at 110 V Rated value — at 24 V Rated value | A | 400 |
| <ul style="list-style-type: none"> • at DC-1 <ul style="list-style-type: none"> — at 110 V Rated value | A | 400 |
| <ul style="list-style-type: none"> • at DC-3 at DC-5 <ul style="list-style-type: none"> — at 110 V Rated value | A | 400 |
| <ul style="list-style-type: none"> • at DC-3 at DC-5 <ul style="list-style-type: none"> — at 24 V Rated value | A | 400 |
| Operating power | | |
| <ul style="list-style-type: none"> • at AC-1 at 400 V Rated value • at AC-2 at 400 V Rated value • at AC-4 at 400 V Rated value | kW | 263 |
| <ul style="list-style-type: none"> • at AC-2 at 400 V Rated value | kW | 231 |
| <ul style="list-style-type: none"> • at AC-4 at 400 V Rated value | W | 200 000 |
| Operating power | | |
| <ul style="list-style-type: none"> • at AC-1 <ul style="list-style-type: none"> — at 230 V at 60 °C Rated value — at 690 V at 60 °C Rated value — at 690 V Rated value • at AC-3 | kW | 151 |
| <ul style="list-style-type: none"> • at AC-1 <ul style="list-style-type: none"> — at 690 V at 60 °C Rated value | kW | 454 |
| <ul style="list-style-type: none"> • at AC-1 <ul style="list-style-type: none"> — at 690 V Rated value | kW | 454 |
| <ul style="list-style-type: none"> • at AC-3 | | |

| | | |
|--|-----|-----|
| — at 230 V Rated value | kW | 132 |
| — at 400 V Rated value | kW | 231 |
| — at 500 V Rated value | kW | 291 |
| — at 690 V Rated value | kW | 400 |
| Operating power for ≥ 200000 operating cycles at AC-4 | | |
| • at 400 V Rated value | kW | 85 |
| • at 690 V Rated value | kW | 133 |
| Operating frequency | | |
| • at AC-3 maximum | 1/h | 500 |

| Control circuit/ Control: | | |
|---|-----|---------------|
| Type of voltage of the control supply voltage | | AC/DC |
| Control supply voltage with AC | | |
| • at 50 Hz Rated value | V | 42 ... 48 |
| • at 60 Hz Rated value | V | 42 ... 48 |
| Control supply voltage for DC | | |
| • Rated value | V | 42 ... 48 |
| • Rated value | Hz | 40 |
| Control supply voltage frequency 2 Rated value | Hz | 60 |
| Operating range factor control supply voltage rated value of the magnet coil with AC | | |
| • at 50 Hz | | 0.8 ... 1.1 |
| • at 60 Hz | | 0.8 ... 1.1 |
| Operating range factor control supply voltage rated value of the magnet coil for DC | | 0.8 ... 1.1 |
| Design of the surge suppressor | | with varistor |
| Apparent pick-up power of the magnet coil with AC | V·A | 830 |
| Apparent holding power of the magnet coil with AC | V·A | 9.2 |
| Closing power of the magnet coil for DC | W | 920 |
| Holding power of the magnet coil for DC | W | 10 |
| Inductive power factor | | |
| • with closing power of the coil | | 0.9 |
| • with the holding power of the coil | | 0.9 |

| Auxiliary circuit: | | |
|-----------------------------------|---|---|
| Number of NC contacts | | |
| • for auxiliary contacts | | |
| — instantaneous contact | | 2 |
| Number of NO contacts | | |
| • for auxiliary contacts | | |
| — instantaneous contact | | 2 |
| Operating current at AC-15 | | |
| • at 230 V Rated value | A | 6 |

| | | |
|--|---|-----|
| <ul style="list-style-type: none"> • at 400 V Rated value | A | 3 |
| Operating current | | |
| <ul style="list-style-type: none"> • at DC-12 at 220 V Rated value | A | 1 |
| <ul style="list-style-type: none"> • at DC-13 at 220 V Rated value | A | 0.3 |
| Operating current | | |
| <ul style="list-style-type: none"> • at DC-12 <ul style="list-style-type: none"> — at 60 V Rated value — at 110 V Rated value | A | 6 |
| | A | 3 |
| <ul style="list-style-type: none"> • at DC-13 <ul style="list-style-type: none"> — at 24 V Rated value — at 60 V Rated value — at 110 V Rated value | A | 10 |
| | A | 2 |
| | A | 1 |

| | | |
|--|--|-------------|
| UL/CSA ratings: | | |
| Contact rating of the auxiliary contacts acc. to UL | | A600 / Q600 |

| | | |
|---|--|--|
| Short-circuit: | | |
| Design of the fuse link | | |
| <ul style="list-style-type: none"> • for short-circuit protection of the main circuit <ul style="list-style-type: none"> — with type of assignment 1 required — with type of assignment 2 required • for short-circuit protection of the auxiliary switch required | | fuse gL/gG: 630 A fuse gL/gG: 500 A fuse gL/gG: 10 A |

| | | |
|---|----|--------------|
| Installation/ mounting/ dimensions: | | |
| Mounting type | | screw fixing |
| <ul style="list-style-type: none"> • Side-by-side mounting | | Yes |
| Height | mm | 214 |
| Width | mm | 160 |
| Depth | mm | 225 |
| Required spacing | | |
| <ul style="list-style-type: none"> • for grounded parts <ul style="list-style-type: none"> — at the side | mm | 10 |

| | | |
|--|--|---|
| Connections/ Terminals: | | |
| Type of electrical connection | | |
| <ul style="list-style-type: none"> • for main current circuit • for auxiliary and control current circuit | | screw-type terminals screw-type terminals |
| Type of connectable conductor cross-section | | |
| <ul style="list-style-type: none"> • for AWG conductors for main contacts • for auxiliary contacts <ul style="list-style-type: none"> — solid — finely stranded with core end processing • for AWG conductors for auxiliary contacts | | 2/0 ... 500 kcmil 2x (0.5 ... 1.5 mm ²), 2x (0.75 ... 2.5 mm ²), max. 2x (0.75 ... 4 mm ²) 2x (0.5 ... 1.5 mm ²), 2x (0.75 ... 2.5 mm ²) 2x (20 ... 16), 2x (18 ... 14), 1x 12 |

Mechanical data:

Size of contactor S12

Ambient conditions:

Installation altitude at height above sea level maximum m 2 000

Ambient temperature

- during operation °C -25 ... +60
- during storage °C -55 ... +80

Certificates/ approvals:

General Product Approval

Functional Safety/Safety of Machinery

Declaration of Conformity



CCC



CSA



UL



[Type Examination](#)



EG-Konf.

Test Certificates

[Special Test Certificate](#)

[Type Test Certificates/Test Report](#)



ABS



DNV



GL



RMRS

Shipping Approval

other

[Environmental Confirmations](#)

[other](#)

[Confirmation](#)

Further information

Information- and Downloadcenter (Catalogs, Brochures,...)

<http://www.siemens.com/industrial-controls/catalogs>

Industry Mall (Online ordering system)

<http://www.siemens.com/industrymall>

Cax online generator

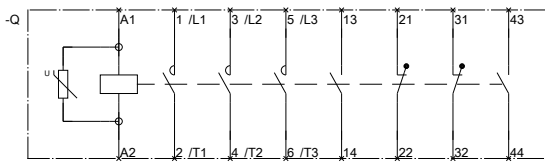
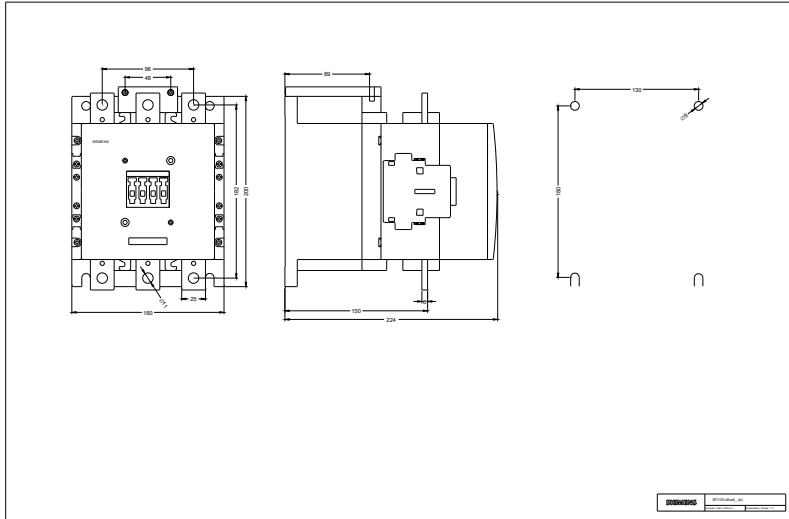
<http://support.automation.siemens.com/WW/CAXorder/default.aspx?lang=en&mlfb=3RT10756AD36>

Service&Support (Manuals, Certificates, Characteristics, FAQs,...)

<http://support.automation.siemens.com/WW/view/en/3RT10756AD36/all>

Image database (product images, 2D dimension drawings, 3D models, device circuit diagrams, EPLAN macros, ...)

http://www.automation.siemens.com/bilddb/cax_de.aspx?mlfb=3RT10756AD36&lang=en



last modified:

11.03.2015

3RT106-A-6_01_4_IEC.DXF
3RT107-A-6_01_4_IEC.DXF