

704.950.1/D - Lamp block



Attention: The preview is based on a sample product. This can differ from your current configuration.

Mounting

Mounting cut-out mm

Front

Front dimension mm

Other Attributes

Weight 0,013 kg

Connection Method

Terminal Double plug 6.3 x 0.8 mm

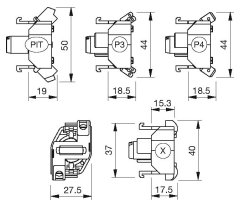
Actuator

Housing material Plastic

EAO – Your Expert Partner for Human Machine Interfaces

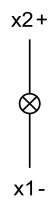
704.950.1/D - Lamp block

Dimensions



P4 = Double plug-in terminal 6.3 x 0.8 mm

Wiring diagram



Additional information

Terminals nickel plated and blank Cu/Sn