


# MICROSWITCHES

## V4 Type Sub Miniature Microswitches 5A

- Rating 5A switching S.P.D.T.  
(10A to order)
- Long life coil spring mechanism
- Solder, PCB, 90° PCB mounting or 2.8mm quick connect terminals
- Button, lever or roller actuators
- Anti Solder Wicking
-  approved

CSM405



### SPECIFICATION

Rating	5A/250VAC (10A to order)	
Contact resistance	50mΩ max	
Insulation strength	100MΩ min/500VDC	
Electrical Life	50,000 operations min	
Temperature range	-10°C to +125°C	
Material	Case	PBT
	Button	PPS
	Actuator	Stainless steel
	Contacts	AgNi10
Terminals	Brass alloy H65 Silver Plated	

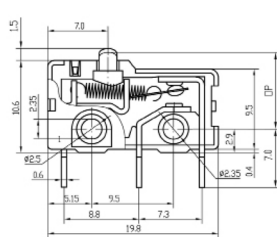
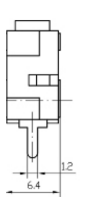
	ACTUATOR STYLE	OPERATING FORCE MAX	RELEASE FORCE MAX	OPERATING POSITION	PRE TRAVEL MAX	MOVEMENT DIFFERENTIAL	OVER TRAVEL MIN
CSM40500-	Button	1.5N	0.3N	8.6 ± 0.4mm	0.8mm	0.2mm	0.5mm
CSM40510-	Short Lever	0.25N	0.04N	8.9 ± 1mm	4.6mm	0.8mm	0.8mm
CSM40511-	Short Uprturned Lever						
CSM40520-	Standard Lever	0.25N	0.06N	8.9 ± 1mm	5mm	0.8mm	1.2mm
CSM40530-	Long Lever	0.2N	0.03N	9.6 ± 2mm	7.5mm	1.5mm	1.6mm
CSM40540-	Simulated Roller	0.25N	0.04N	12 ± 1.2mm	4.7mm	0.8mm	1.2mm
CSM40550-	Standard Roller	0.25N	0.04N	15.2 ± 1mm	4.8mm	0.9mm	1.2mm
CSM40570-	Wave Lever						
CSM40580-	Extra Long Lever	0.1N	0.02N	9.8 ± 1.5mm	8mm	2.5mm	1.5mm
CSM40581-	Extra Long Stepped Lever						

### Types of Terminals: Types of Actuators:

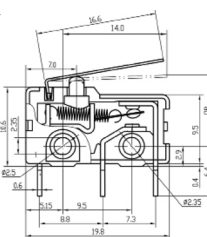
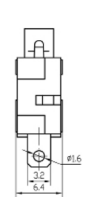
Suffix A = Solder



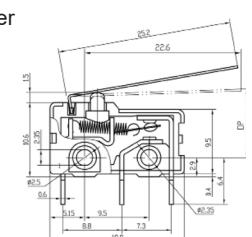
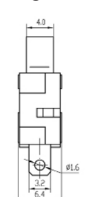
Button



Short Lever



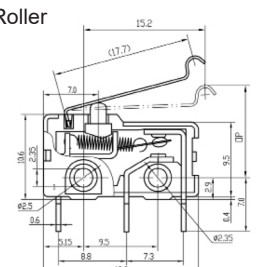
Long Lever



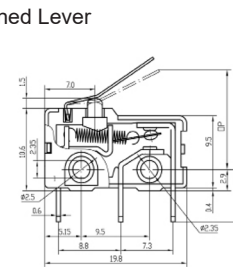
Suffix E = 2.8 quick connect



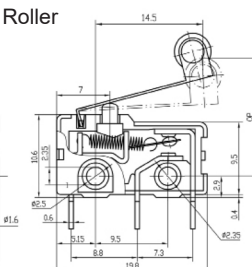
Simulated Roller



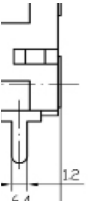
Short Uprturned Lever



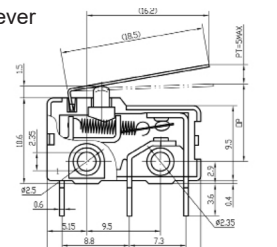
Standard Roller



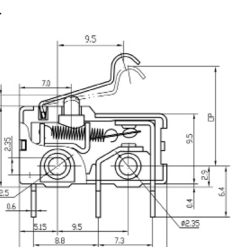
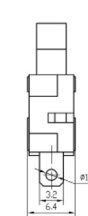
Suffix F = PCB mount



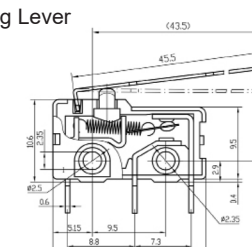
Standard Lever



Wave Lever



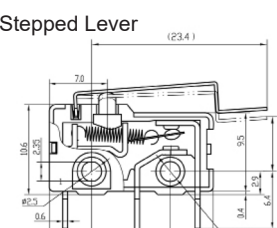
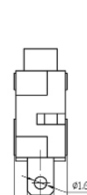
Extra Long Lever



Suffix G = 90°



Extra Long Stepped Lever



CAMDENBOSS

We operate a constant improvement policy, our products are subject to change without notice.

Ver 1.1

+44 (0)1638 716101  
info@camdenboss.com  
www.camdenboss.com



FM 28614 EMS 613558