

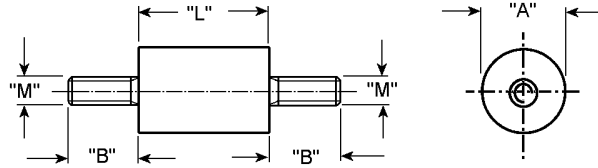
## Fixings and PCB Mounts

| Order code | Manufacturer code | Description                      |
|------------|-------------------|----------------------------------|
| 33-5330    | n/a               | STURDIPOST ROUND 6.5 X 13 M3 S/S |
| 33-5335    | n/a               | STURDIPOST ROUND 6.5 X 13 M3 I/S |
| 33-5340    | n/a               | STURDIPOST ROUND 6.5 X 13 M3 I/I |
| 33-5345    | n/a               | STURDIPOST ROUND 9.5 X 16 M4 I/S |
| 33-5350    | n/a               | STURDIPOST ROUND 9.5 X 16M4 I/I  |
| 33-5355    | n/a               | STURDIPOST ROUND 9.5 X 25 M4 I/S |
| 33-5360    | n/a               | STURDIPOST ROUND 9.5 X 38 M4 I/S |
| 33-5365    | n/a               | STURDIPOST ROUND 9.5 X 22 M5 S/S |
| 33-5370    | n/a               | STURDIPOST ROUND 9.5 X 22 M5/I   |

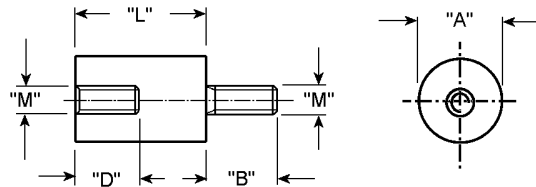
|  |                          |
|--|--------------------------|
| Fixings and PCB Mounts   | Page 1 of 2              |
| The enclosed information is believed to be correct, Information may change 'without notice' due to product improvement. Users should ensure that the product is suitable for their use. E. & O. E. | Revision A<br>04/07/2003 |



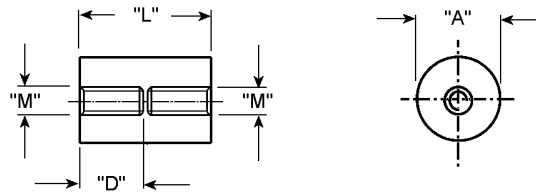
**TYPE S/S**



**TYPE I/S**



**TYPE I/I**



**TNSP**

THREADED NYLON PILLARS

| Part No.             | Thread "M" | "H" mm | "B" mm | "D" mm | "L" mm  | Type  |
|----------------------|------------|--------|--------|--------|---|---|
| TNSP-M2-6.5-L-TYPE   | M2         | 6.5    | 6.0    | 6.0    | 10.0mm to 105mm (available in 1mm increments) | I/I - female/female<br>I/S - female/male<br>S/S - male/male |
| TNSP-M2-8-L-TYPE     | M2         | 8.0    |        |        |   |   |
| TNSP-M2.5-6.5-L-TYPE | M2.5       | 6.5    |        |        |   |   |
| TNSP-M2.5-8-L-TYPE   | M2.5       | 8.0    |        |        |   |   |
| TNSP-M3-6.5-L-TYPE   | M3         | 6.5    |        |        |   |   |
| TNSP-M3-8-L-TYPE     | M3         | 8.0    |        |        |   |   |
| TNSP-M4-8-L-TYPE     | M4         | 8.0    |        |        |   |   |
| TNSP-M4-9.5-L-TYPE   | M4         | 9.5    |        |        |   |   |
| TNSP-M5-9.5-L-TYPE   | M5         | 9.5    | 10.0   | 10.0   | 19.0mm to 105mm (available in 1mm increments) |   |
| TNSP-M6-12.7-L-TYPE  | M6         | 12.7   | 12.7   | 12.7   | 22.0mm to 105mm (available in 1mm increments) |   |
| TNSP-M8-15.9-L-TYPE  | M8         | 15.9   | 14.0   | 14.0   | 30.0mm to 105mm (available in 1mm increments) |   |
| TNSP-M8-19-L-TYPE    | M8         | 19.0   | 14.0   | 14.0   | 30.0mm to 105mm (available in 1mm increments) |   |
| TNSP-M10-25-L-TYPE   | M10        | 25.0   | 20.0   | 20.0   | 38.0mm to 105mm (available in 1mm increments) |   |
| TNSP-M12-30-L-TYPE   | M12        | 30.0   | 25.0   | 25.0   | 45.0mm to 105mm (available in 1mm increments) |   |

Material: Nylon 6 - natural, UL 94 V-2  
by special order:  
PTFE - natural, UL 94 V-0  
Brass  
Std. Pk.: 100 pcs.

Note:

