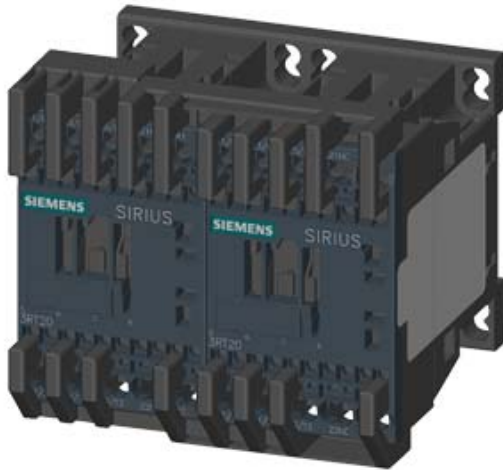


REV. COMB., AC3, 4KW/400V AC110V, 50/60HZ, 3-POLE, SZ S00 SPRING-LOADED TERMINAL ELECTR. AND MECH. INTERLOCK



product brand name	SIRIUS
Product designation	reversing contactor assembly 3RA23
Manufacturer article number	
<ul style="list-style-type: none"> • 1 of the supplied contactor • 2 of the supplied contactor • of the supplied RH assembly kit 	3RT2016-2AF02 3RT2016-2AF02 3RA2913-2AA2

General technical data:

Insulation voltage		
<ul style="list-style-type: none"> • with degree of pollution 3 Rated value 	V	690
Degree of pollution		3
Shock resistance		9.8g / 5 ms and 5.9g / 10 ms
Surge voltage resistance Rated value	kV	6
Mechanical service life (switching cycles)		
<ul style="list-style-type: none"> • of the contactor typical • of the contactor with added auxiliary switch block typical 		10 000 000 10 000 000
Protection class IP		
<ul style="list-style-type: none"> • on the front 		IP20
Equipment marking		
<ul style="list-style-type: none"> • acc. to DIN EN 81346-2 		Q

Main circuit:

Number of poles for main current circuit		3
Number of NC contacts for main contacts		0
Number of NO contacts for main contacts		3
Operating voltage		

<ul style="list-style-type: none"> • at AC-3 Rated value maximum 	V	690
Operating current		
<ul style="list-style-type: none"> • at AC-1 <ul style="list-style-type: none"> — at 400 V at ambient temperature 40 °C Rated value — at 400 V at ambient temperature 60 °C Rated value • at AC-2 at 400 V Rated value • at AC-3 <ul style="list-style-type: none"> — at 400 V Rated value • at AC-4 at 400 V Rated value 	A	18
	A	16
	A	7
	A	9
	A	8.5
Operating current with 1 current path		
<ul style="list-style-type: none"> • at DC-1 <ul style="list-style-type: none"> — at 24 V Rated value — at 110 V Rated value • at DC-3 at DC-5 <ul style="list-style-type: none"> — at 24 V Rated value — at 110 V Rated value 	A	20
	A	2.1
	A	20
	A	0.15
Operating current with 2 current paths in series		
<ul style="list-style-type: none"> • at DC-1 <ul style="list-style-type: none"> — at 24 V Rated value — at 110 V Rated value • at DC-3 at DC-5 <ul style="list-style-type: none"> — at 110 V Rated value — at 24 V Rated value 	A	20
	A	12
	A	0.35
	A	20
Operating current with 3 current paths in series		
<ul style="list-style-type: none"> • at DC-1 <ul style="list-style-type: none"> — at 24 V Rated value — at 110 V Rated value • at DC-3 at DC-5 <ul style="list-style-type: none"> — at 110 V Rated value — at 24 V Rated value 	A	20
	A	20
	A	20
	A	20
Operating power		
<ul style="list-style-type: none"> • at AC-2 at 400 V Rated value • at AC-4 at 400 V Rated value 	kW	4
	kW	4
Operating power		
<ul style="list-style-type: none"> • at AC-3 <ul style="list-style-type: none"> — at 400 V Rated value — at 500 V Rated value — at 690 V Rated value 	kW	4
	kW	4.5
	kW	5.5
Operating frequency		
<ul style="list-style-type: none"> • at AC-3 maximum 	1/h	750

No-load switching frequency	1/h	1 500
-----------------------------	-----	-------

Control circuit/ Control:

Type of voltage of the control supply voltage		AC
Control supply voltage 1 with AC		
<ul style="list-style-type: none"> at 50 Hz Rated value 	V	110
<ul style="list-style-type: none"> at 60 Hz Rated value 	V	110
Operating range factor control supply voltage rated value of the magnet coil with AC		
<ul style="list-style-type: none"> at 50 Hz 		0.8 ... 1.1
<ul style="list-style-type: none"> at 60 Hz 		0.85 ... 1.1

Auxiliary circuit:

Number of NC contacts		
<ul style="list-style-type: none"> for auxiliary contacts 		
<ul style="list-style-type: none"> — per direction of rotation 		0
<ul style="list-style-type: none"> — instantaneous contact 		0
<ul style="list-style-type: none"> — lagging switching 		0
Number of NO contacts		
<ul style="list-style-type: none"> for auxiliary contacts 		
<ul style="list-style-type: none"> — per direction of rotation 		0
<ul style="list-style-type: none"> — instantaneous contact 		0
<ul style="list-style-type: none"> — leading contact 		0
Product expansion Auxiliary switch		Yes
Operating current of the auxiliary contacts at AC-12 maximum	A	10
Operating current of the auxiliary contacts at AC-15		
<ul style="list-style-type: none"> at 230 V 	A	6
<ul style="list-style-type: none"> at 400 V 	A	3
Operating current of the auxiliary contacts at DC-13		
<ul style="list-style-type: none"> at 24 V 	A	10
<ul style="list-style-type: none"> at 60 V 	A	2
<ul style="list-style-type: none"> at 110 V 	A	1
<ul style="list-style-type: none"> at 220 V 	A	0.3
Contact reliability of the auxiliary contacts		< 1 error per 100 million operating cycles

UL/CSA ratings:

Full-load current (FLA) for three-phase AC motor		
<ul style="list-style-type: none"> at 480 V Rated value 	A	7.6
<ul style="list-style-type: none"> at 600 V Rated value 	A	9
yielded mechanical performance [hp]		
<ul style="list-style-type: none"> for single-phase AC motor at 110/120 V Rated value 	metric hp	0.33

- for single-phase AC motor at 230 V Rated value
- for three-phase AC motor at 200/208 V Rated value
- for three-phase AC motor at 220/230 V Rated value
- for three-phase AC motor at 460/480 V Rated value
- for three-phase AC motor at 575/600 V Rated value

metric hp	1
metric hp	2
metric hp	3
metric hp	5
metric hp	7.5

Contact rating of the auxiliary contacts acc. to UL

A600 / Q600

Short-circuit:

Design of the fuse link

- for short-circuit protection of the main circuit
 - with type of assignment 1 required
 - with type of assignment 2 required
- for short-circuit protection of the auxiliary switch required

gL/gG LV HRC 3NA, DIAZED 5SB, NEOZED 5SE:
35 A
gL/gG LV HRC 3NA, DIAZED 5SB, NEOZED 5SE:
20 A
fuse gL/gG: 10 A

Installation/ mounting/ dimensions:

mounting position

+/-180° rotation possible on vertical mounting surface; can be tilted forward and backward by +/- 22.5° on vertical mounting surface

Mounting type

screw and snap-on mounting onto 35 mm standard mounting rail

Height

mm 84

Width

mm 90

Depth

mm 83

Required spacing

- with side-by-side mounting
 - forwards
 - Backwards
 - upwards
 - downwards
 - at the side
- for grounded parts
 - forwards
 - Backwards
 - upwards
 - at the side
 - downwards
- for live parts

mm	6
mm	0
mm	6
mm	6
mm	6
mm	6
mm	6
mm	0
mm	6
mm	6
mm	6
mm	6

— forwards	mm	6
— Backwards	mm	0
— upwards	mm	6
— downwards	mm	6
— at the side	mm	6

Connections/ Terminals:

Type of electrical connection		
• for main current circuit		spring-loaded terminals
• for auxiliary and control current circuit		spring-loaded terminals
Type of connectable conductor cross-section		
• for main contacts		
— single or multi-stranded		2x (0,5 ... 4 mm ²)
— finely stranded with core end processing		2x (0.5 ... 2.5 mm ²)
— finely stranded without core end processing		2x (0.5 ... 2.5 mm ²)
• for AWG conductors for main contacts		1x (20 ... 12)
• for auxiliary contacts		
— single or multi-stranded		2x (0,5 ... 2,5 mm ²)
— finely stranded with core end processing		2x (0.5 ... 1.5 mm ²)
— finely stranded without core end processing		2x (0.5 ... 1.5 mm ²)
• for AWG conductors for auxiliary contacts		2x (20 ... 14)
Apparent pick-up power of the magnet coil with AC		
• at 50 Hz	V·A	27

Safety related data:

B10 value with high demand rate acc. to SN 31920		1 000 000
Proportion of dangerous failures		
• with low demand rate acc. to SN 31920	%	40
• with high demand rate acc. to SN 31920	%	75
Failure rate [FIT] with low demand rate acc. to SN 31920	FIT	100
T1 value for proof test interval or service life acc. to IEC 61508	y	20
Protection against electrical shock		finger-safe

Mechanical data:

Size of contactor		S00
--------------------------	--	-----

Communication/ Protocol:

Product function Bus communication		No
Protocol is supported		
• AS-interface protocol		No
Product function Control circuit interface with IO link		No

Ambient conditions:

Installation altitude at height above sea level maximum	m	2 000
Ambient temperature		
• during operation	°C	-25 ... +60
• during storage	°C	-55 ... +80

Certificates/ approvals:

General Product Approval	Declaration of Conformity	Test Certificates
--------------------------	---------------------------	-------------------



CSA



UL



EG-Konf.

[Type Test Certificates/Test Report](#)

[Special Test Certificate](#)

Shipping Approval



ABS



BUREAU VERITAS



DNV



GL



LRS



PRS

Shipping Approval

other



RINA



RMRS

[Environmental Confirmations](#)

[other](#)

Further information

Information- and Downloadcenter (Catalogs, Brochures,...)

<http://www.siemens.com/industrial-controls/catalogs>

Industry Mall (Online ordering system)

<http://www.siemens.com/industrymall>

Cax online generator

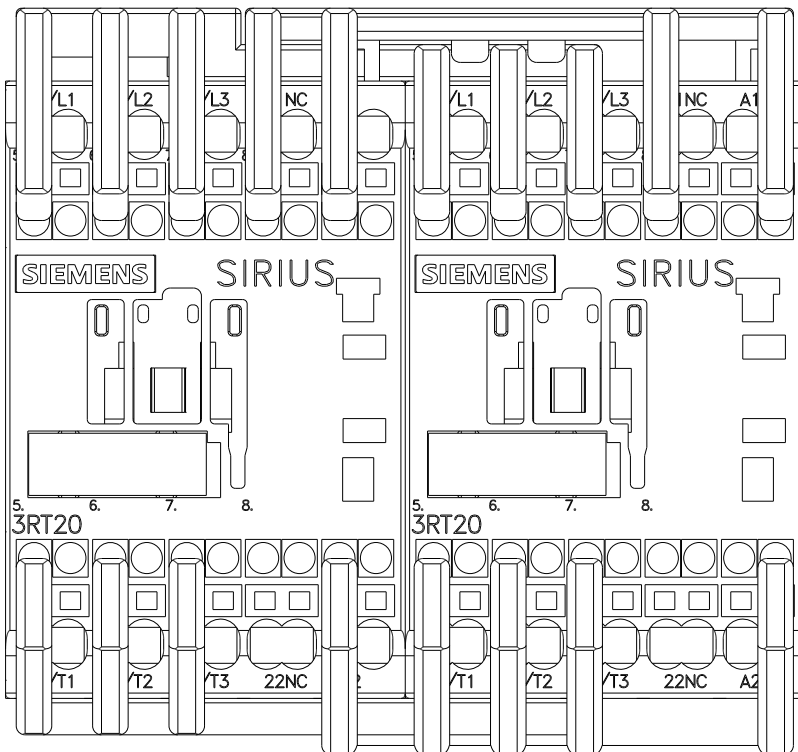
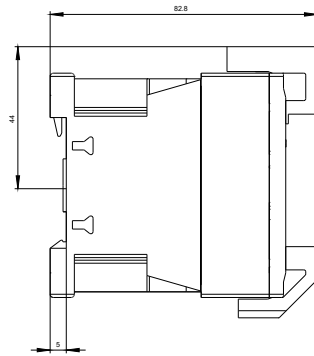
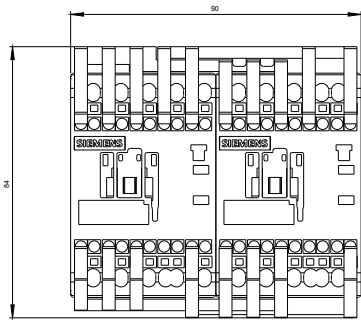
<http://support.automation.siemens.com/WW/CAXorder/default.aspx?lang=en&mlfb=3RA23168XB302AF0>

Service&Support (Manuals, Certificates, Characteristics, FAQs,...)

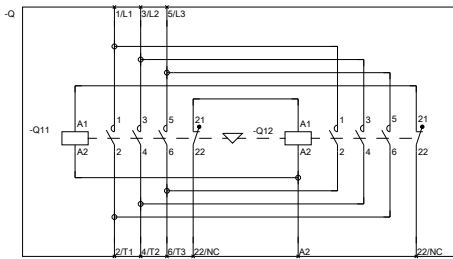
<http://support.automation.siemens.com/WW/view/en/3RA23168XB302AF0/all>

Image database (product images, 2D dimension drawings, 3D models, device circuit diagrams, EPLAN macros, ...)

http://www.automation.siemens.com/bilddb/cax_de.aspx?mlfb=3RA23168XB302AF0&lang=en



WENDEKOMBINATION BGR. S00



REVERSING COMB. SZ S00

last modified:

11.03.2015