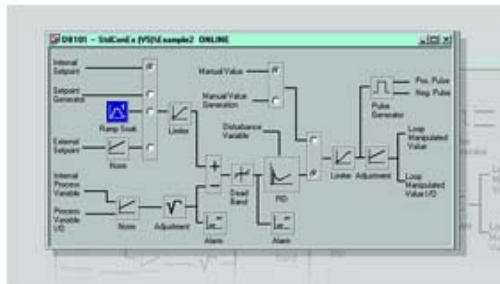


SIMATIC S7, STAND.PID CTRL V5.2 SINGLE LICENSE F.1  
 INSTALLATION R-SW, WITHOUT SW AND DOCU., CLASS A, 2  
 LANGUAGES (G,E), REFERENCE-HW: S7-300/-400, C7



### Standards, approvals, certificates

Developed in accordance with IEC 61131	Yes
--	-----

### Operating systems

Executable for operating system	
• Windows 9x	Yes
• Windows ME	No
• Windows NT 4.0	No
• Windows 2000	Yes
• Windows XP	Yes

### Software

Class A	Yes
Runtime software	
Target system	
— C7	Yes
— S7-300	Yes
— S7-400	Yes

Authorization/licenses	
• Single license (EL)	Yes

### Documentation

Languages	
• German	Yes
• English	Yes

### Weights

---

Weight, approx.

220 g

**last modified:**

12.03.2015