



When precision matters[®]

L-Bracket TW3XXX

The L-Bracket Mount is designed to fit all of Tallysman's TW3XXX family of antennas. The bracket is available as stainless steel or aluminum and can be pole mounted with either clamps or screws (please refer to the diagram on the right).

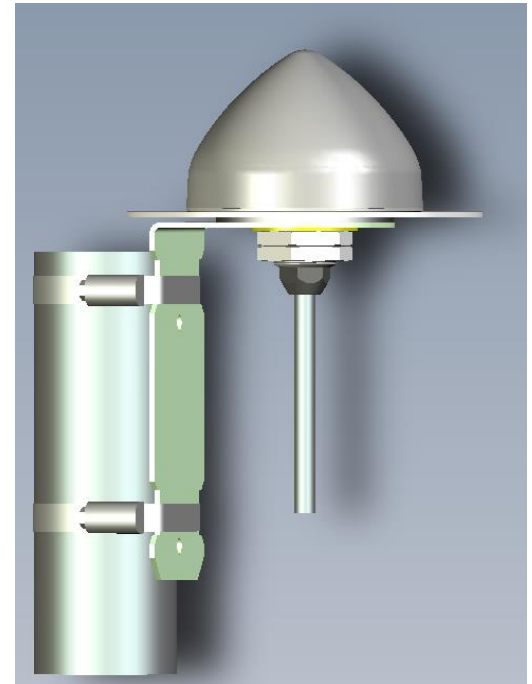
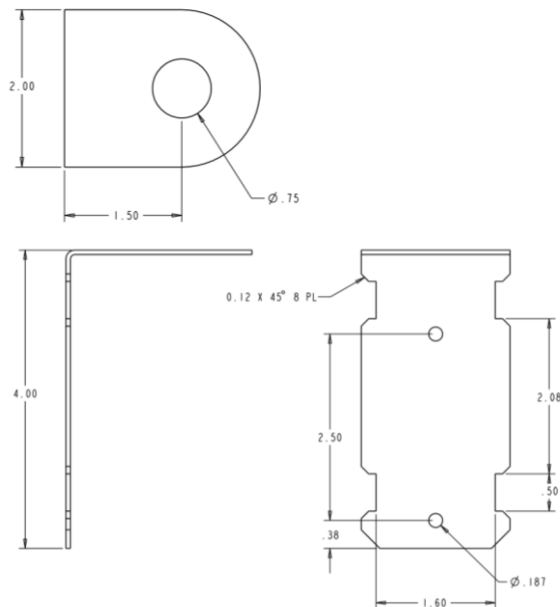
Applications

- Marine or
- Non-corrosive environments

Features

- Available in Stainless Steel or Aluminum
- Easy to use
- Resilient to weather conditions

Drawing



L-Bracket TW3000 Assembly

Ordering Information

L-Bracket for TW3000 Family of Antennas

Part Number: 23-0040-0 (aluminum), 23-0040-1 (stainless steel)

Tallysman Wireless Inc

36 Steacie Drive
Ottawa ON K2K 2A9 Canada
Tel +1 613 591 3131 Fax 613 591 3121
sales@tallysman.com

The information provided herein is intended as a guide only and is subject to change without notice. This document is not to be regarded as a guarantee of performance. Tallysman Wireless Inc. hereby disclaims any or all warranties and liabilities of any kind. © 2016 Tallysman Wireless Inc. All rights reserved.