

Products

SP60 series | Illuminated double-pole switch dependent light 16A quick connection 6.3 black body

PRODUCT CODE: SP6018C1F0000



Wiring diagrams



Terminal type



sample image

accessories

Body colour



Actuator colour



Marking



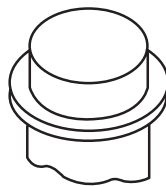
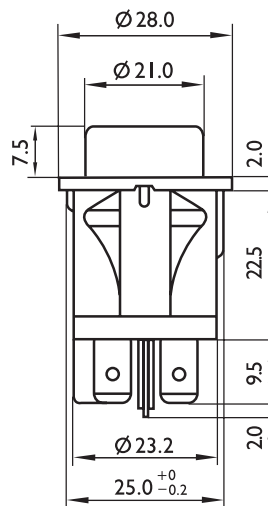
Rating

16 (6) A / 250 VAC
10 (4) A / 400 VAC
10 (4) A / 250 VAC - 5E4
T120/55 °C

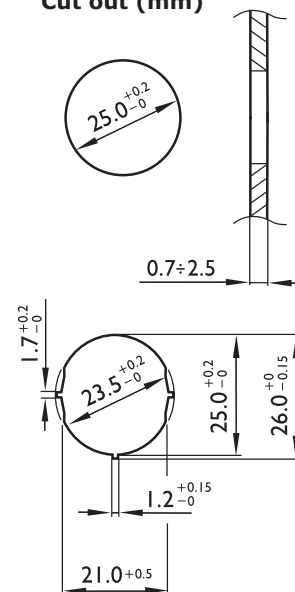
Approvals



Dimensions (mm)



Cut out (mm)



Termination

