

## ACT20P ACT20P-CML-10-AO-RC-S

**Weidmüller Interface GmbH & Co. KG**  
Klingenbergstraße 16  
D-32758 Detmold  
Germany  
Fon: +49 5231 14-0  
Fax: +49 5231 14-292083  
www.weidmueller.com



### ACT20P: The flexible solution

- Precise and highly functional signal converters
- Simple configuration via display (Pro DCDC II), FDT/DTM software or DIP switch
- Release levers simplify handling
- More space in the control cabinet, from 12.5 mm wide for two channels

### General ordering data

Type	ACT20P-CML-10-AO-RC-S
Order No.	<a href="#">2044850000</a>
Version	Current-measuring transducer, Limit value monitoring, Signal converter/isolator, Current monitoring, Analogue output, Screw connection, Input measurement range: configurable, 0... 1/5/10 A AC (RMS) or DC
GTIN (EAN)	4050118409680
Qty.	1 pc(s).

**ACT20P**  
**ACT20P-CML-10-AO-RC-S**

**Weidmüller Interface GmbH & Co. KG**  
 Klingenbergstraße 16  
 D-32758 Detmold  
 Germany  
 Fon: +49 5231 14-0  
 Fax: +49 5231 14-292083  
 www.weidmueller.com

**Technical data****Dimensions and weights**

Width	17.5 mm	Width (inches)	0.689 inch
Height	119.2 mm	Height (inches)	4.693 inch
Depth	113.6 mm	Depth (inches)	4.472 inch
Net weight	141 g		

**Temperatures**

Humidity	5...95 %, no condensation	Operating temperature, max.	60 °C
Operating temperature, min.	-25 °C	Storage temperature, max.	85 °C
Storage temperature, min.	-40 °C	Operating temperature	-25 °C...60 °C
Ambient temperature	-25 °C...+70 °C	Storage temperature	-40 °C...85 °C

**Probability of failure**

MTTF	130 Years
------	-----------

**Input**

Number of inputs	1	Input signal	Power cable can be connected to the terminals
Input measurement range	configurable, 0...1/5/10 A AC (RMS) or DC	Input frequency	AC: 15...400 Hz (true root mean square), AC: 50 Hz (arithmetic average)

**General data**

Accuracy	$\leq \pm 0.3\%$ @ 1 A / 5 A, $\leq \pm 0.6\%$ @ 10 A	Configuration	DIP switch and potentiometer
Galvanic isolation	4-way isolator, between input / output / supply / relay	Mounting rail	TS 35
Power consumption, max.	2.2 W	Step response time	$\leq 300$ ms (RMS), $\leq 60$ ms (AA)
Supply voltage	16,8 V...31,2 V	Temperature coefficient	$\leq \pm 100$ ppm/K @ -25...+55 °C, $\leq \pm 200$ ppm/K @ +55...+70 °C

**Insulation coordination**

EMC standards	IEC 61326-1, IEC 61010-2-201	Galvanic isolation	4-way isolator, between input / output / supply / relay
Impulse withstand voltage	6 kV (1.2/50 $\mu$ s)	Insulation voltage	4 kV <sub>eff</sub> / 1 min.
Pollution severity	2	Rated voltage	300 V AC <sub>rms</sub>
Surge voltage category	III	Test voltage	4 kV

**Output (analogue)**

Load resistance current	$\leq 600 \Omega$	Load resistance voltage	$\geq 10 \text{ k}\Omega$
Output current	adjustable, 0...20 mA, 4...20 mA, -20...+20 mA	Output voltage	adjustable, 0...10 V, 2...10 V, 0...5 V, 1...5 V, -5...+5 V, -10...+10 V
Type (analogue output)	Voltage and current output (configurable)		

**ACT20P**  
**ACT20P-CML-10-AO-RC-S**

**Weidmüller Interface GmbH & Co. KG**  
 Klingenbergstraße 16  
 D-32758 Detmold  
 Germany  
 Fon: +49 5231 14-0  
 Fax: +49 5231 14-292083  
 www.weidmueller.com

**Technical data****Output (digital)**

Alarm function	Surge current, Under-current, Alarm delay: 0...10 s	Number of digital outputs	1
Type	Relay, 1 CO contact, normal / inverse adjustment	Max. switching voltage, DC	24 V
Max. switching voltage, AC	250 V	Rated switching current	2 A

**Connection data**

Type of connection	Screw connection	Tightening torque, min.	0.4 Nm
Tightening torque, max.	0.6 Nm	Clamping range, rated connection	1.5 mm <sup>2</sup>
Clamping range, min.	0.5 mm <sup>2</sup>	Clamping range, max.	2.5 mm <sup>2</sup>
Wire connection cross section AWG, min.	AWG 26	Wire connection cross section AWG, max.	AWG 12

**Classifications**

ETIM 6.0	EC002475	eClass 6.2	27-21-09-02
eClass 9.1	27-21-01-23		

**Approvals**

Approvals



ROHS	Conform
------	---------

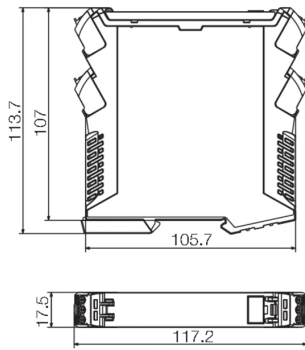
**Downloads**

Approval/Certificate/Document of Conformity	<a href="#">DNV GL certification</a> <a href="#">Declaration of Conformity</a>
Software	<a href="#">DIP switch configuration tool</a>
User Documentation	<a href="#">Instruction sheet</a>

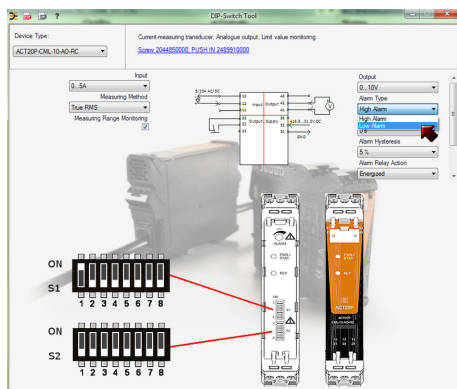
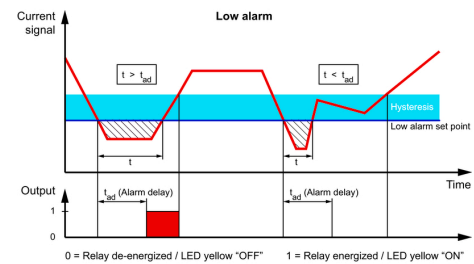
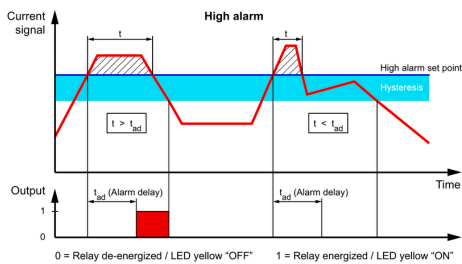
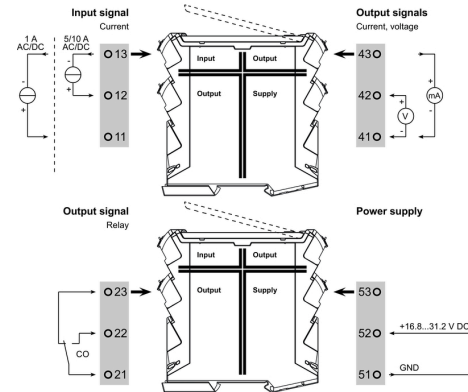
**ACT20P**  
**ACT20P-CML-10-AO-RC-S**

**Weidmüller Interface GmbH & Co. KG**  
Klingenbergstraße 16  
D-32758 Detmold  
Germany  
Fon: +49 5231 14-0  
Fax: +49 5231 14-292083  
www.weidmueller.com

Drawings



Connection diagram



example for DIP switch setting (with ACT20 tool)