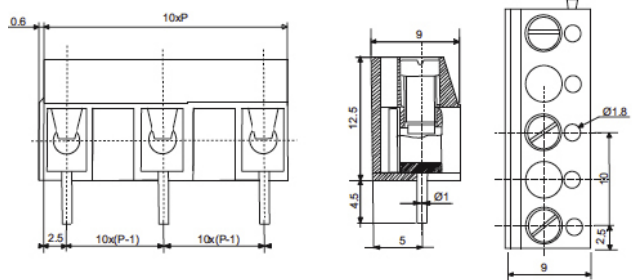


PCB Terminal Blocks

10 mm Pitch, Standard



Standard profile

Withstand Voltage - AC1500V/1min

Wire protector terminals

Stainless steel wire protector

Guided pin alignment

Screw/Torque - M3 Steel, Nickel Plated 0.4Nm

Recommended PCB hole size $\varnothing 1.1$ mm

SPECIFICATION:

Pitch	10 mm
Termination type	Clamp Terminals/Screw Connection
Connection direction	horizontal
Rated current to EN	16 A
Rated current to UL	16 A
Rated voltage to EN	250 V
Rated voltage to UL	250 V
Connection cross-section	0.13-1.3 mm ² (26-16 AWG)
Colour	black
Temperature range	-33...+120 °C
Width	9 mm
Height	12.5 mm
Material	PA 66, UL94-V0

PRODUCT RANGE:

Art. Nr.	Poles	Length
RND 205-00023	2	15 mm
RND 205-00024	3	25 mm
RND 205-00025	4	35 mm
RND 205-00026	5	45 mm
RND 205-00027	6	55 mm
RND 205-00028	7	65 mm
RND 205-00029	8	75 mm
RND 205-00030	9	85 mm
RND 205-00031	10	95 mm
RND 205-00032	11	105.0 mm
RND 205-00033	12	115 mm