

- 1
- 2
- 3
- 4
- 5
- 6
- 7
- 8
- 9
- 10
- 11
- 12
- 13
- 14
- 15
- 16
- 17
- 18

MATERIAL

Die cast zinc alloy, epoxy resin coating, black colour RAL 9005 (SW) or grey colour RAL 9006 (SR), matte finish.

PIN ANCHORING ELEMENTS

Acetal resin based (POM) technopolymer.

WORKING TEMPERATURE

80°C.

SPRING

AISI 302 stainless steel.

ROTATING PIN

AISI 303 stainless steel.

STANDARD EXECUTIONS

- **CMVT-A2:** detent with angle -90° / 0° / 90° / 180° resistant torque 1 Nm.
- **CMVT-C2:** detent with angle 3° / 117°, resistant torque 1 Nm.

ROTATION ANGLE (APPROXIMATE VALUE)

Max rotation angle: about 270° (-90° and +180° being 0° the condition where the two interconnected surfaces are on the same plane).

RESISTANT TORQUE

The resistant torque corresponds to the torque that must be applied to free the detent hinge.

FEATURES AND APPLICATIONS

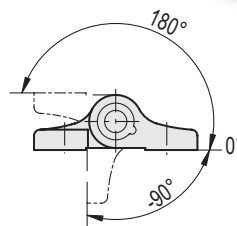
The internal detent device allows three different detent positions of the door depending on the execution.

This is particularly advantageous when dealing with doors that need to be frequently opened and closed for loading and unloading, maintenance or repairs.

The positioning of the detent at -3° of the CMVT-C2 ensures that the door or cover, once closed, exerts a slight pressure against the frame.

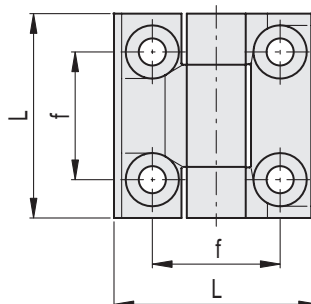
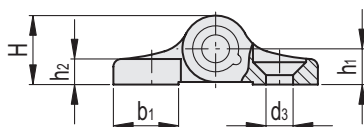
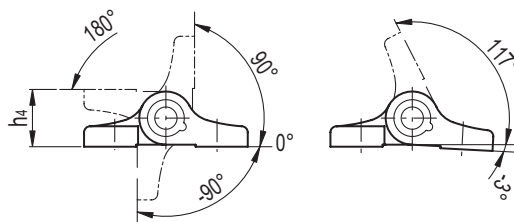
ACCESSORIES ON REQUEST

- PCM-SP: spacer plates for hinges (see page -).
- PCM-TH: spacer for hinge fixing (see page -).



CMVT-A2

CMVT-C2



CMVT-A2

Code	Description	L	d3	f	H	h1	h2	h4	b1	ΔΔ
428892	CMVT.60-A2-SW	60	8.3	36	18.5	9.5	7.5	19	20	155
428891	CMVT.60-A2-SR	60	8.3	36	18.5	9.5	7.5	19	20	155

CMVT-C2

Code	Description	L	d3	f	H	h1	h2	h4	b1	ΔΔ
428897	CMVT.60-C2-SW	60	8.3	36	18.5	9.5	7.5	19	20	155
428896	CMVT.60-C2-SR	60	8.3	36	18.5	9.5	7.5	19	20	155