

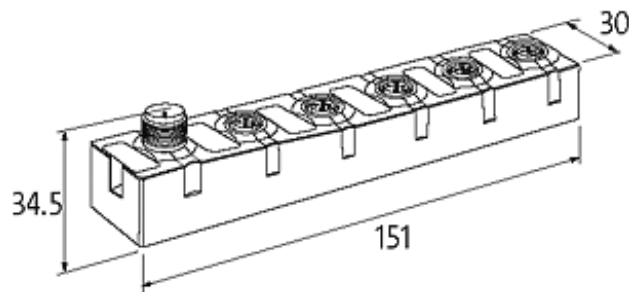
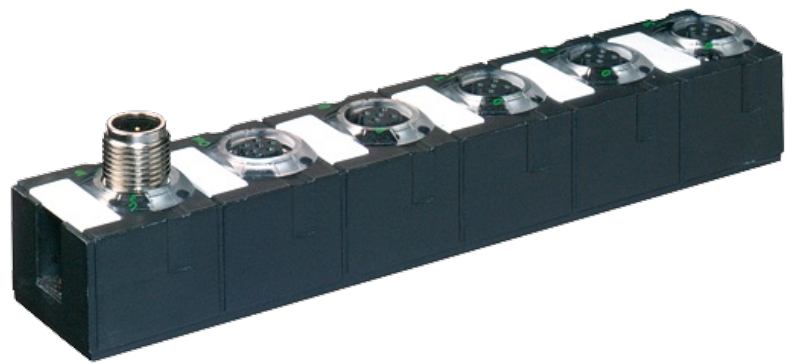
MASI68 AI4 RTD E 4XM12

AI4 - (E) RTD
4 × M12

For connection cables please see chapter "Connection Technology" All housings are fully potted

[Link to Product](#)

Illustration



Product may differ from Image

Input

Connection	2-, 3-, 4-wire technology
Sensor type	Pt 100
Resolution (analog)	15 Bit + sign
Measuring current	1.25 mA

Connections

Fieldbus	M12, A-coded
I/O ports	M12, 4-pole

Technical Data

Bus voltage (AS-Interface)	26.5...31.6 V DC
Addressing	via master or M12 connection and programming device
Address range	1...31

Profile (IO/ID/ID2 code)	S-7.3.E
Total current	max. 100 mA
General data	
Protection	IP68
Mounting method	screw fixing
Temperature range	0...+55 °C (storage temperature -40...+85 °C)
Dimensions H × W × D	151×30×34.5 mm
Input range	
Standard range Pt 100	-200...+850 °C (0.1 °C)
Climatic range	-120...+130 °C (0.01 °C)
Diagnostic	
Communication status	via LED
Diagnostic via LED	per module
Monitoring - no voltage	yes
Actuator warning	no
Wire break upper/lower limit overload	per module via LED and BUS
Commercial data	
country of origin	DE
customs tariff number	85176200
minimum order quantity	1