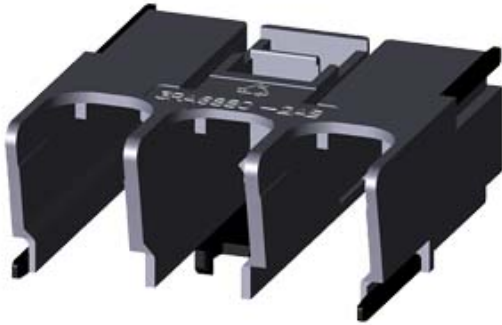


2 TERMINAL COVERS FOR 3-PHASE INFEED 25/35
MM2 3RA6812-8AB/AC 1 BAG CONTAINS 2 COVERS



General technical data:

product brand name		SIRIUS
Product designation		Terminal cover screw-type infeeds
Protection class IP		IP20
Degree of pollution		3
Installation altitude at height above sea level maximum	m	2 000
Ambient temperature		
• during transport	°C	-55 ... +80
• during storage	°C	-55 ... +80
• during operation	°C	-20 ... +60
Vibration resistance		f = 4 to 5.8 Hz; d = 15 mm; f = 5.8 to 500 Hz; a = 2 m / s ² 10 cycles
Shock resistance		Semi-sinusoidal a = 6 m/s ² at 10 ms; 3 pos. and 3 neg. Shock in all axes

Installation/ mounting/ dimensions:

Mounting type		snap-on mounting
Width	mm	45
Height	mm	45
Depth	mm	18

Certificates/ approvals:

General Product Approval	EMC	other
--------------------------	-----	-------



[Environmental Confirmations](#)

[other](#)

Safety related data:

Protection against electrical shock

finger-safe

Further information

Information- and Downloadcenter (Catalogs, Brochures,...)

<http://www.siemens.com/industrial-controls/catalogs>

Industry Mall (Online ordering system)

<http://www.siemens.com/industrymall>

Cax online generator

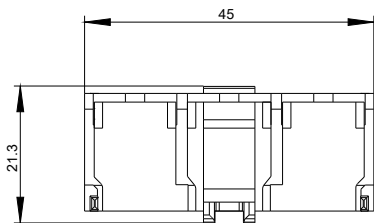
<http://support.automation.siemens.com/WW/CAXorder/default.aspx?lang=en&mlfb=3RA68802AB>

Service&Support (Manuals, Certificates, Characteristics, FAQs,...)

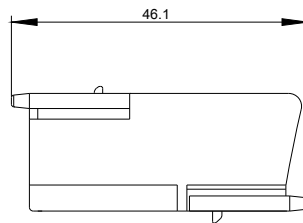
<http://support.automation.siemens.com/WW/view/en/3RA68802AB/all>

Image database (product images, 2D dimension drawings, 3D models, device circuit diagrams, EPLAN macros, ...)

<http://www.automation.siemens.com/bilddb/index.aspx?attID9=3RA68802AB&lang=en>



last modified:



09.03.2015