

POTTER & BRUMFIELD SOLID STATE RELAYS

SSRDC Series

TE Connectivity's (TE) Potter & Brumfield Solid State Relays SSRDC Series utilizes DC switching technology with low power dissipation FETs which includes optical coupling. The SSRDC Series is used in DC load applications, which provides reliable DC switching up to 40A and operating voltages up to 200V. Heat sink mounting to maintain base temperatures and load conditions, is recommended.



Applications

Industrial Machinery

- Material Handling Equipment
- Cranes

Transportation

- Trains
- Construction Equipment

Building Control

- Access Control

Electrical

- 12A, 25A and 40A load current
- 200V DC operating voltage
- DC input control
- 1500V DC optical isolation
- FET output

Mechanical

- Standard hockey puck package
- Relay mounting type: Chassis Mount
- Coupling: Optical

Specifications

- UL approval: E29244

Benefits


- Provides low power dissipation to extend electrical life
- Achieves high Pulse Width Modulation with low switching times when providing power to devices

Materials

- Aluminum base for heat dissipation
- UL 94-V0 engineering plastics

Product Selection Information

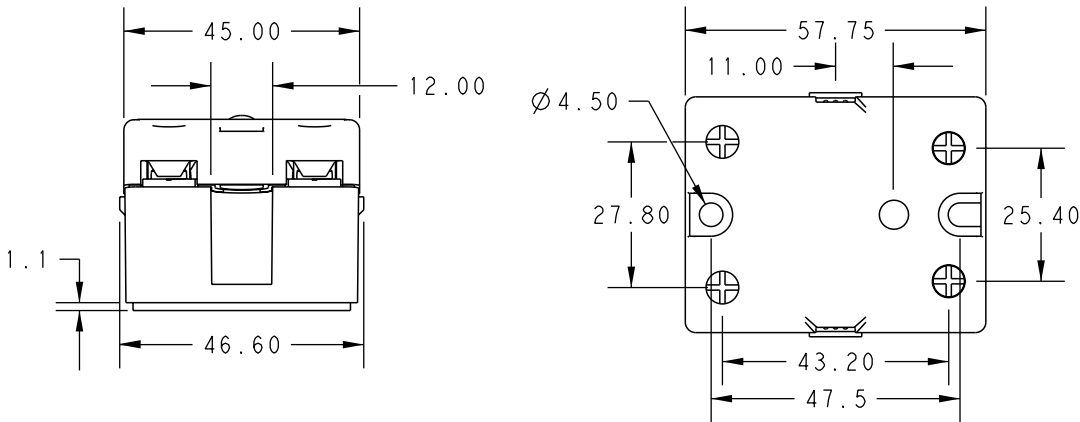
SSRDC Series - Solid State Relay

	Part Number	Part Code	Description
	2330274-1	SSRDC-200D12	12A, 200V DC WITH DC INPUT
	2330274-2	SSRDC-200D25	25A, 200V DC WITH DC INPUT
	2330274-3	SSRDC-200D40	40A, 200V DC WITH DC INPUT

For more part numbers see the [SSRDC Series data sheet](#) on [te.com](#)

Dimensions

SSRDC Series



*Overall height dimensions includes with clear cover
Dimensions in mm

te.com

© 2018 TE Connectivity. All Rights Reserved. Potter & Brumfield, TE, TE Connectivity, and the TE connectivity (logo) are trademarks of the TE Connectivity Ltd. family of companies. Other logos, product and Company names mentioned herein may be trademarks of their respective owners.

While TE has made every reasonable effort to ensure the accuracy of the information in this brochure, TE does not guarantee that it is error-free, nor does TE make any other representation, warranty or guarantee that the information is accurate, correct, reliable or current. TE reserves the right to make any adjustments to the information contained herein at any time without notice. TE expressly disclaims all implied warranties regarding the information contained herein, including, but not limited to, any implied warranties of merchantability or fitness for a particular purpose. The dimensions in this catalog are for reference purposes only and are subject to change without notice. Specifications are subject to change without notice. Consult TE for the latest dimensions and design specifications.

1-1773951-4 JN 04/2018

USA: +1 (800) 522-6752
Canada: +1 (905) 475-6222
Mexico: +52 (0) 55-1106-0800
Latin/S. America: +54 (0) 11-4733-2200
Germany: +49 (0) 6251-133-1999
UK: +44 (0) 800-267666
France: +33 (0) 1-3420-8686
The Netherlands: +31 (0) 73-6246-999
China: +86 (0) 400-820-6015