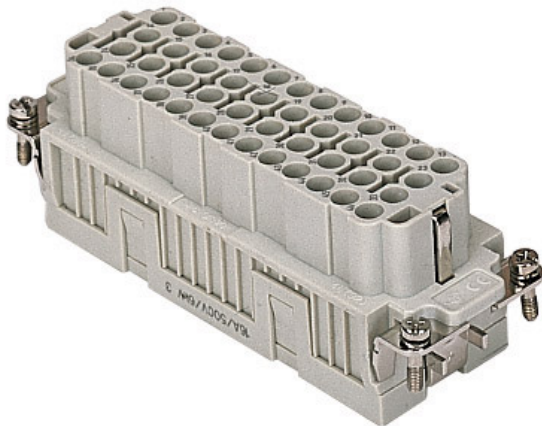


Item code


# CQEF 46



## Brief description:

female insert, 46 poles + PE, crimp connections, 16A 500V, 6kV, 3, size "104.27", CLASS insert series

### Product description

<b>Model</b>	female insert
<b>Version</b>	crimp connections
<b>Series</b>	CQE
<b>Product type</b>	for female inserts 16A
<b>Family</b>	CLASS inserts
<b>Size</b>	size "104.27"
<b>N° of poles</b>	46 poles + 




### Technical data

<b>Current</b>	16 A (A.C. and D.C.)
<b>Voltage</b>	500 V
<b>Sustained impulse voltage</b>	6kV
<b>Pollution degree</b>	3
<b>Operating temperature range (min, max)</b>	-50°C ... +70°C
<b>Plugging cycles</b>	≥ 200
<b>IP degree of protection</b>	IP20 without enclosure; IP65/IP66/IP67/IP68 with enclosure
<b>Wire cross section PE</b>	0,14 - 4 mm <sup>2</sup> ; AWG 20 - 12

### Other technical details

<b>Characteristics according to EN61984</b>	16A 500V 6kV 3; 16A 830V 8kV 2
<b>Insulation resistance</b>	≥ 1 GΩ
<b>Rated voltage according to UL/CSA</b>	600V
<b>UL 94 flammability rating</b>	V-0
<b>Weight</b>	85,00 g

### Approvals / Standards

<b>Reference standard</b>	EN 61984 (2001-11)
<b>Quality mark</b>	   , EAC
<b>Conformity</b>	CQC, CE

### General ordering information

<b>EAN code</b>	8015747037129
<b>Tariff number</b>	85369095
<b>Country of origin</b>	Made in EU (IT)
<b>ETIM classification</b>	EC000438

### Packaging Information

<b>Packaging length</b>	210,00 mm
<b>Packaging height</b>	130,00 mm
<b>Packaging width</b>	240,00 mm
<b>Packaging weight</b>	2,94 kg
<b>Packaging volume</b>	6,55 dm <sup>3</sup>
<b>Packaging description</b>	Carton box
<b>Packaging quantity</b>	30 Pcs
<b>Packaging EAN code</b>	8015747208833
<b>Sub-packaging weight</b>	0,49 kg
<b>Sub-packaging description</b>	Carton
<b>Sub-packaging quantity</b>	5 Pcs
<b>Sub-packaging EAN barcode</b>	8015747037136

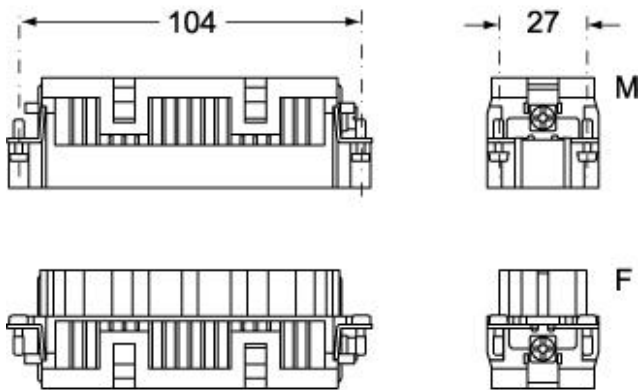
Item code

# CQEF 46

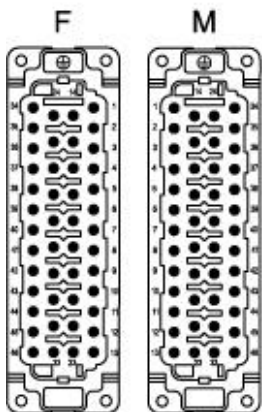


## Catalogue drawings

### CQEM 46

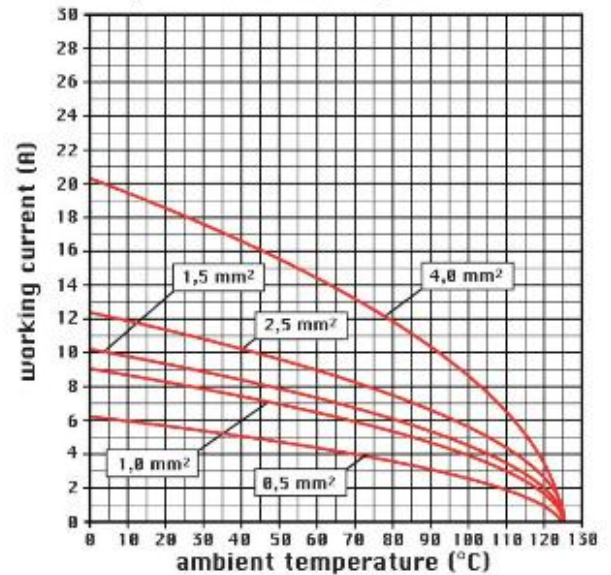


### CQEF 46



## Catalogue drawings

diagram CQE 46 and 92 poles



## Notes

CQEF/M 46 inserts:

- characteristics according to EN 61984:  
(16A 500V 6kV 3)  
(16A 830V) 8kV 2)
- rated voltage according to UL/CSA: 600V
- insulation resistance: > 10 GOhm
- ambient temperature limit: -40 °C ... +125 °C
- are made of self-extinguishing thermoplastic resin  
UL 94 V0
- mechanical life: > 500 cycles
- contact resistance: < 1 mOhm
- for contact crimping instructions, please see the crimping tool  
section (16A contacts, CCF, CCM and CC...AN series) .
- enclosures: size "104.27":  
C-TYPE IP65/IP66  
C7 IP67 stainless steel lever

- V-TYPE IP65/IP66  
stainless steel lever
- T-TYPE IP65 insulating
- JEI zinc-plated steel lever
- BIG hoods
- W-TYPE aggressive environments
- EMC
- central lever
- IP68
- panel supports: page:COB