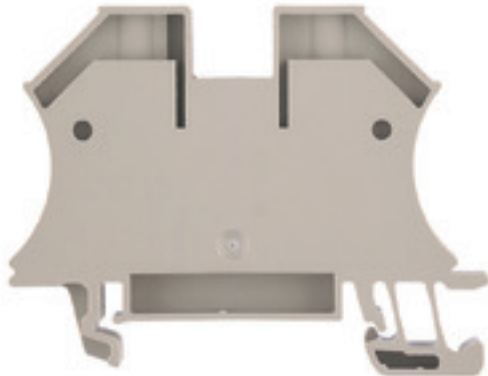


W-Series
WDU 16N

Weidmüller Interface GmbH & Co. KG
 Klingenbergstraße 16
 D-32758 Detmold
 Germany
 Fon: +49 5231 14-0
 Fax: +49 5231 14-292083
 www.weidmueller.com


Klippon® Connect with clamping yoke Technology

The high reliability and variety of designs of the terminal blocks with clamping yoke connections make planning easier and optimises operational safety. Klippon® Connect provides a proven response to a range of different requirements.

General ordering data

| | |
|------------|---|
| Type | WDU 16N |
| Order No. | 1036100000 |
| Version | Feed-through terminal, Screw connection, 16 mm ² , 690 V, 76 A, Dark Beige |
| GTIN (EAN) | 4008190273217 |
| Qty. | 50 pc(s). |

W-Series
WDU 16N

Weidmüller Interface GmbH & Co. KG
 Klingenbergstraße 16
 D-32758 Detmold
 Germany
 Fon: +49 5231 14-0
 Fax: +49 5231 14-292083
 www.weidmueller.com

Technical data
Dimensions and weights

| | | | |
|--------------------------|---------|-----------------|------------|
| Width | 12 mm | Width (inches) | 0.472 inch |
| Height | 60 mm | Height (inches) | 2.362 inch |
| Depth | 46.5 mm | Depth (inches) | 1.831 inch |
| Depth including DIN rail | 47 mm | Weight | 24.85 g |
| Net weight | 24.08 g | | |

Temperatures

| | | | |
|----------------------------------|--------|----------------------------------|--------|
| Continuous operating temp., min. | -50 °C | Continuous operating temp., max. | 120 °C |
|----------------------------------|--------|----------------------------------|--------|

Material data

| | | | |
|---------------------------|-------|--------|------------|
| Material | Wemid | Colour | Dark Beige |
| UL 94 flammability rating | V-0 | | |

System specifications

| | | | |
|-------------------------------|--|--|--------------|
| Version | Screw connection, for screwable cross-connection | Tightening torque (clamping screw for copper conductors) | 1.2...2.4 Nm |
| End cover plate required | No | Number of potentials | 1 |
| Number of levels | 1 | No. of clamping points per level | 2 |
| Number of potentials per tier | 1 | Levels cross-connected internally | No |
| PE connection | No | Mounting rail | TS 35 |
| N-function | No | PE function | No |
| PEN function | Yes | | |

2 clampable conductors (H05V/H07V) with equal cross-section (rated connection)

| | | | |
|--|---------------------|--|-------------------|
| Wire connection cross section, finely stranded, two clampable wires, min. | 1.5 mm ² | Wire cross-section, finely stranded, two clampable wires, max. | 4 mm ² |
| Wire connection cross section, finely stranded with wire-end ferrules DIN 46228/1, 2 clampable wires, min. | 1.5 mm ² | Wire connection cross section, finely stranded with wire-end ferrules DIN 46228/1, 2 clampable wires, max. | 4 mm ² |

Additional technical data

| | | | |
|--------------------------|--------|-----------------------------|---------|
| Explosion-tested version | No | Number of similar terminals | 1 |
| Open sides | closed | Type of mounting | Snap-on |

CSA rating data

| | | | |
|-------------------------------|----------------|-------------------------------|-------|
| Certificate No. (CSA) | 200039-1057876 | Current size C (CSA) | 70 A |
| Current size D (CSA) | 5 A | Voltage size C (CSA) | 300 V |
| Voltage size D (CSA) | 600 V | Wire cross section max. (CSA) | 6 AWG |
| Wire cross section min. (CSA) | 14 AWG | | |

W-Series
WDU 16N

Weidmüller Interface GmbH & Co. KG
 Klingenbergstraße 16
 D-32758 Detmold
 Germany
 Fon: +49 5231 14-0
 Fax: +49 5231 14-292083
 www.weidmueller.com

Technical data
Conductors for clamping (rated connection)

| | | | |
|---|---------------------|---|---------------------|
| Blade size | 1.0 x 5.5 mm | Clamping range, max. | 25 mm ² |
| Clamping range, min. | 1.5 mm ² | Clamping screw | M 4 |
| Connection cross-section, stranded, max. | 25 mm ² | Connection cross-section, stranded, min. | 1.5 mm ² |
| Connection direction | on side | Gauge to IEC 60947-1 | B7 |
| Number of connections | 2 | Stripping length | 12 mm |
| Tightening torque, max. | 2.4 Nm | Tightening torque, min. | 1.2 Nm |
| Torque level with DMS electric screwdriver | 4 | Type of connection | Screw connection |
| Wire connection cross section AWG, max. | AWG 6 | Wire connection cross section AWG, min. | AWG 14 |
| Wire connection cross section, finely stranded, max. | 16 mm ² | Wire connection cross-section, finely stranded with wire-end ferrules DIN 46228/1, max. | 16 mm ² |
| Wire connection cross-section, finely stranded with wire-end ferrules DIN 46228/1, min. | 1.5 mm ² | Wire connection cross-section, finely stranded with wire-end ferrules DIN 46228/4, max. | 16 mm ² |
| Wire connection cross-section, finely stranded with wire-end ferrules DIN 46228/4, min. | 1.5 mm ² | Wire connection cross-section, finely stranded, min. | 1.5 mm ² |
| Wire connection cross-section, solid core, max. | 16 mm ² | Wire connection cross-section, solid core, min. | 1.5 mm ² |

Rating data

| | | | |
|---------------------------------|--------------------|--|---------|
| Rated cross-section | 16 mm ² | Rated voltage | 690 V |
| Rated current | 76 A | Current at maximum wires | 101 A |
| Standards | IEC 60947-7-1 | Volume resistance according to IEC 60947-7-x | 0.42 mΩ |
| Rated impulse withstand voltage | 8 kV | Pollution severity | 3 |

UL rating data

| | | | |
|---|--------|---|-------|
| Certificate No. (UR) | E60693 | Conductor size Factory wiring max. (UR) | 6 AWG |
| Conductor size Factory wiring min. (UR) | 14 AWG | Conductor size Field wiring max. (UR) | 6 AWG |
| Conductor size Field wiring min. (UR) | 14 AWG | Current size B (UR) | 70 A |
| Current size C (UR) | 70 A | Voltage size B (UR) | 600 V |
| Voltage size C (UR) | 600 V | | |

Classifications

| | | | |
|------------|-------------|------------|-------------|
| ETIM 3.0 | EC000897 | ETIM 4.0 | EC000897 |
| ETIM 5.0 | EC000897 | ETIM 6.0 | EC000897 |
| UNSPSC | 30-21-18-11 | eClass 5.1 | 27-14-11-20 |
| eClass 6.2 | 27-14-11-20 | eClass 7.1 | 27-14-11-20 |
| eClass 8.1 | 27-14-11-20 | eClass 9.0 | 27-14-11-20 |
| eClass 9.1 | 27-14-11-20 | | |

Product information

| | |
|---------------------------------|--|
| Descriptive text ordering data | 1000 VDC rated voltage tested. |
| Descriptive text technical data | AWG 6/7 and H07V-R25 tighten with a tightening torque of 1.5 Nm. |
| Descriptive text accessories | Cross-connections, socket and test plug, see section "W series accessories". |

Data sheet**W-Series
WDU 16N**

Weidmüller Interface GmbH & Co. KG
Klingenbergstraße 16
D-32758 Detmold
Germany
Fon: +49 5231 14-0
Fax: +49 5231 14-292083
www.weidmueller.com

Technical data**Approvals**

Approvals



ROHS

Conform

DownloadsApproval/Certificate/Document of
Conformity[DE_PT1001_20160414_147_ISSUE01.pdf](#)

Brochure/Catalogue

[CAT 1 TERM 16/17 EN](#)

Engineering Data

[EPLAN, WSCAD, Zuken E3.S](#)**Safety note**

Safety notice

[Safety Information](#)

Data sheet

W-Series
WDU 16N

Weidmüller Interface GmbH & Co. KG
Klingenbergstraße 16
D-32758 Detmold
Germany
Fon: +49 5231 14-0
Fax: +49 5231 14-292083
www.weidmueller.com

Drawings

