

10EJT1F ✓ ACTIVE

Corcom | Corcom EJT

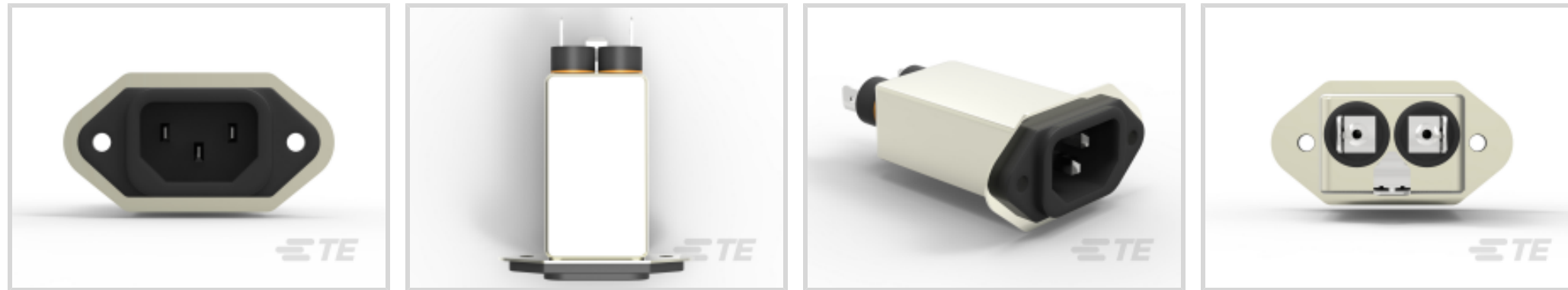
TE Internal #: 4-1609157-3

Corcom EJT, Multi-Function Inlet Filters, Power Line, Vertical,
Leakage Current (Max) (120VAC, 60Hz) 250 μ A, 10A Filter Current
Rating

[View on TE.com >](#)



EMI Filters > Multi-Function Inlet Filters > CORCOM EJT SERIES IEC FILTERED INLETS



Filter Type: **Power Line**

Mount Angle: **Vertical**

Leakage Current (Max) (120VAC, 60Hz): **250 μ A**

Filter Current Rating: **10 A**

Filter Mount Style: **Extended Flange**

[All CORCOM EJT SERIES IEC FILTERED INLETS \(22\)](#)

Features

Product Type Features

| | |
|--------------------------------|------------------|
| Ground Choke Option | No |
| Ground Option | None |
| Filter Type | Power Line |
| Filter Input Termination Type | IEC |
| Filter Output Termination Type | .250" FASTON |
| Filtering Requirements | Filtered |
| Filter Connector Type | IEC 60320-1 C-14 |

Electrical Characteristics

| | |
|--------------------------------------|-------------|
| Leakage Current (Max) (120VAC, 60Hz) | 250 μ A |
| Filter Current Rating | 10 A |
| Voltage Rating (Max) | 250 VAC |

Mechanical Attachment

| | |
|--------------------|-----------------|
| Mount Angle | Vertical |
| Filter Mount Style | Extended Flange |

Product Compliance

For compliance documentation, visit the product page on [TE.com](https://www.te.com)>

| | |
|---|---|
| EU RoHS Directive 2011/65/EU | Compliant |
| EU ELV Directive 2000/53/EC | Compliant |
| China RoHS 2 Directive MIIT Order No 32, 2016 | No Restricted Materials Above Threshold |
| EU REACH Regulation (EC) No. 1907/2006 | Current ECHA Candidate List: JAN 2021 (211) Candidate List Declared Against: JUL 2019 (201) SVHC > Threshold: Not Yet Reviewed |
| Halogen Content | Not Low Halogen - contains Br or Cl > 900 ppm. |
| Solder Process Capability | Not applicable for solder process capability |

Product Compliance Disclaimer

This information is provided based on reasonable inquiry of our suppliers and represents our current actual knowledge based on the information they provided. This information is subject to change. The part numbers that TE has identified as EU RoHS compliant have a maximum concentration of 0.1% by weight in homogenous materials for lead, hexavalent chromium, mercury, PBB, PBDE, DBP, BBP, DEHP, DIBP, and 0.01% for cadmium, or qualify for an exemption to these limits as defined in the Annexes of Directive 2011/65/EU (RoHS2). Finished electrical and electronic equipment products will be CE marked as required by Directive 2011/65/EU. Components may not be CE marked. Additionally, the part numbers that TE has identified as EU ELV compliant have a maximum concentration of 0.1% by weight in homogenous materials for lead, hexavalent chromium, and mercury, and 0.01% for cadmium, or qualify for an exemption to these limits as defined in the Annexes of Directive 2000/53/EC (ELV). Regarding the REACH Regulation, the information TE provides on SVHC in articles for this part number is based on the latest European Chemicals Agency (ECHA) 'Guidance on requirements for substances in articles' posted at this URL: <https://echa.europa.eu/guidance-documents/guidance-on-reach>

Compatible Parts

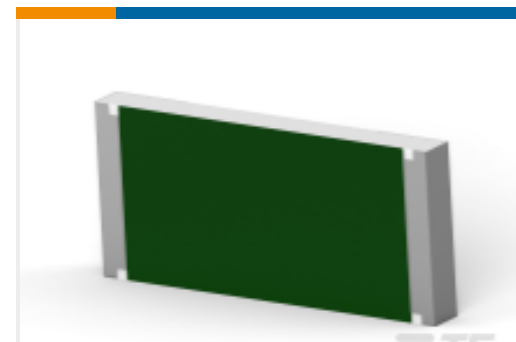


Also in the Series | [Corcom EJT](#)



Multi-Function Inlet Filters(22)

Customers Also Bought

TE Part #4-1393483-7
V42254A1115C209=SUB D STIFTELEITE Part #3-1393483-8
V42254A1115B209=SUB D FEDERLEITE Part #1-2176404-2
3550 39K 1%TE Part #1-530743-4
MINI BOX PIN HDR ASY 40 POSTE Part #YDTS20W15-05AAV001
D38999: Square Flange, 15-05 insertTE Part #1-770194-0
UMNLI GRND PIN DUPL AUBR LFTE Part #1-2364573-6
AVH19 FLT SS LK R+P GRN 24V26ATE Part #2176368-3
RQ 0603 52K3 0.1% 10PPM 1K RLTE Part #2176375-6
RQ 0805 1K3 0.1% 10PPM 1K RLTE Part #1520136-2
7360K13=TOGGLE SWI

Documents

CAD Files

3D PDF

3D

Customer View Model

[ENG_CVM_CVM_4-1609157-3_B.2d_dxf.zip](#)

English

Customer View Model

[ENG_CVM_CVM_4-1609157-3_B.3d_igs.zip](#)



English

Customer View Model

[ENG_CVM_CVM_4-1609157-3_B.3d_stp.zip](#)

English

By downloading the CAD file I accept and agree to the [Terms and Conditions](#) of use.

Datasheets & Catalog Pages

[1654001_CORCOM_PRODUCT_GUIDE](#)

English

Corcom EJT Flanged Inlet Filter

English

Corcom Combined Selector Charts

English