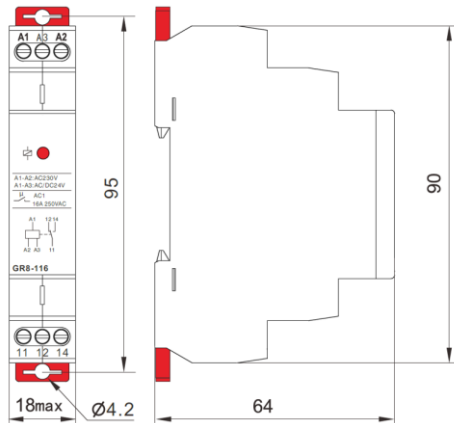


Data Sheet

Revision: Feb 2024

Intermediate relay



Applications

- intermediate relay used for switching larger load output, strengthen or multiplying contacts of the existing device

Item no.	2997210	2997211	2997212	2997214	2997213
Model No.	GR8-116/12	GR8-116/230	GR8-208/230	GR8-308/12	GR8-308/230
Supply terminals	A1-A2				
Voltage range	AC/DC 12 V	AC 230 V / AD 24 V	AC 230 V / AD 24 V	AC/DC 12 V	AC 230 V / AD 24 V
Burden	AC max. 12VA/DC.max1.9W				
Supply terminals	A1-A2-A3				
Voltage range	AC 230 V (A1-A2), AC/DC 24 V (A1-A3)				
Burden	AC max. 12 VA/DC max. 1.9 W				
Supply voltage tolerance	-15%;+10%				
Max. changeover time	40 ms				

Output

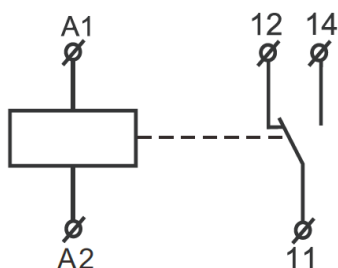
Number of contacts	1x SPDT	1x SPDT	2x SPDT	3x SPDT	3x SPDT
Current rating	16 A/AC1		8 A/AC1		
Switching voltage	250 VAC / 24 VDC				
Min. breaking capacity DC	500 mW				
Output indication	Red LED				
Mechanical life	1 x 10 ⁷				
Electrical life (AC1)	1 x 10 ⁵				
Reset time	max.200 ms				
Operating temperature	-20 to 55°C				
Storage temperature	-35 to 75°C				
Mounting/DIN rail	Din rail EN/IEC 60715				
Protection degree	IP40 for front panel/IP20 terminals				
Operating position	any				
Overvoltage category	III				
Pollution degree	2				
Max. cable size (mm ²)	solid wire max.1 x 2.5 or 2 x 1.5 / with sleeve max. 1 x 2 5 (AWG 12)				
Dimensions	90 x 18 x 64 mm				
Weight					

Item no.: 2997210, 2997211, 2997212, 2997213, 2997214

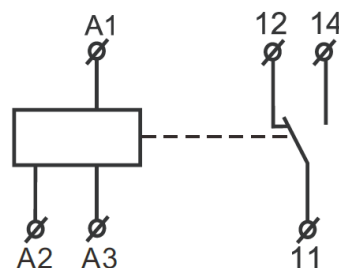
Data Sheet

Wiring Diagram

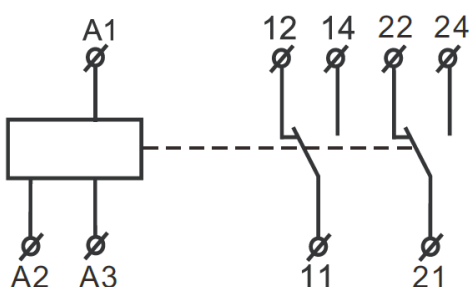
Item No. 2997210



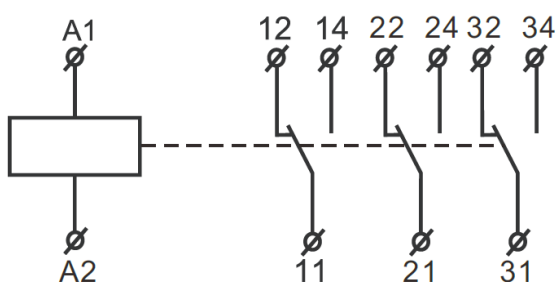
Item No. 2997211



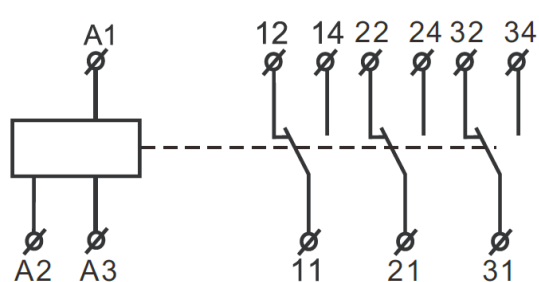
Item No. 2997212



Item No. 2997214



Item No. 2997213



English: Item No. 2997211, 2997212, 2997213

Danger - hazardous voltage - will cause electric shock, serious injuries or death. Installation and maintenance work on this product may only be carried out by an authorized electrician. Disconnect the electrical system and the product from the power supply before starting work.

German: Item No. 2997211, 2997212, 2997213

Achtung, gefährliche Spannung - kann zu elektrischem Schlag, Verletzungen oder Tod führen. Installations- und Wartungsarbeiten an diesem Produkt dürfen nur durch eine autorisierte Elektrofachkraft durchgeführt werden. Vor Beginn der Arbeiten elektrische Anlage und das Produkt spannungsfrei schalten.