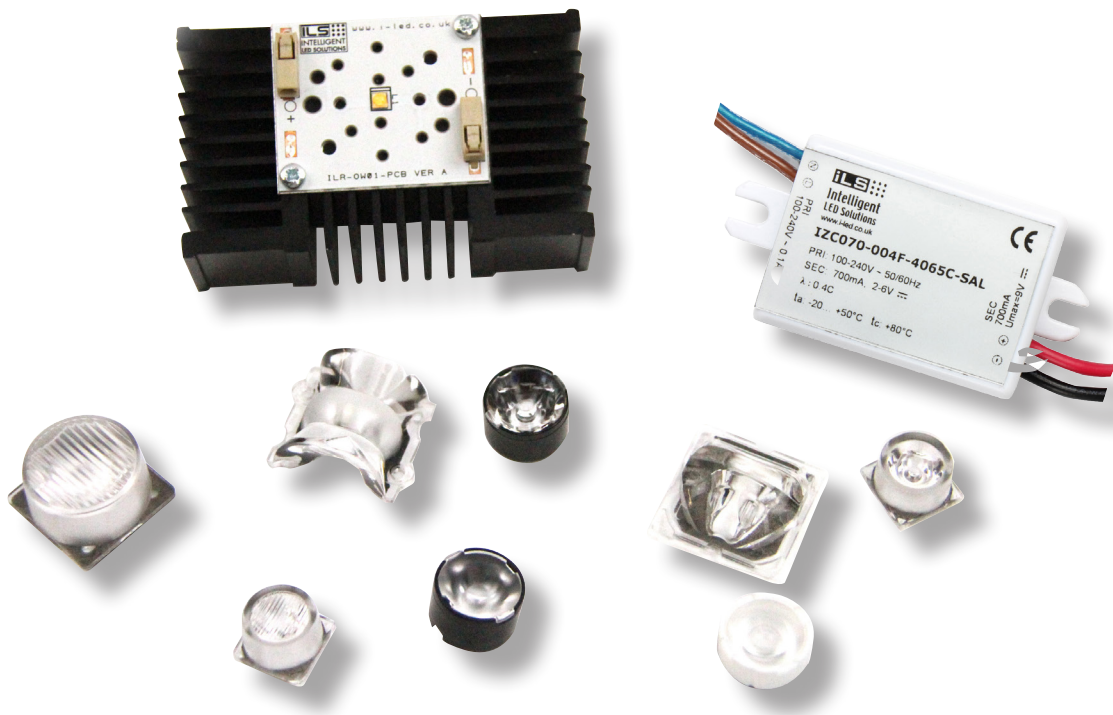


# ILS LEDiL Lens Selector Development Kit

ILK-LEDIL-OSLON-SELECTOR-0x.

The LEDiL selector development kit from ILS is designed to explore which secondary optic works best with OSRAM OSLON® LEDs. There are 4 types of LEDiL selector kits which represent each member of the OSLON® family; OSLON® SSL 80, OSLON® SSL 150 and OSLON® Square. The fourth kit contains all 3 OSLON® LEDs within the same box. The LEDiL Selector has been designed to work with most single source optics from LEDiL and can be connected to an LED driver thanks to the on board connectors. OSLON® SSL 80 and 150 can be driven up to 1300mA whilst the OSLON® square can be driven up to 1800mA while OSRAM's power chip technology remains efficient even at the highest drive currents. A very low thermal resistance ensures cool running and a highly efficient product.



## CONTENTS

Product Options	<a href="#">page 2</a>	Powering up	<a href="#">page 4</a>
Kit Contents	<a href="#">page 2</a>	Important Information and Precautions	<a href="#">page 4</a>
Standard lenses included	<a href="#">page 3</a>	Safety Information	<a href="#">page 5</a>
Other compatible LEDiL lens families	<a href="#">page 3</a>		

## PRODUCT OPTIONS

ILS Part Number	Description
ILK-LEDIL-OSLON-SELECTOR-01.	LEDiL Lens Development Kit, Including OSOLON® SSL 150, 4000K LED Engine, Driver, Heatsink, TIM, Screws and a selection of LEDiL lenses
ILK-LEDIL-OSLON-SELECTOR-02.	LEDiL Lens Development Kit, Including OSOLON® Square, 4000K LED Engine, Driver, Heatsink, TIM, Screws and a selection of LEDiL lenses
ILK-LEDIL-OSLON-SELECTOR-03.	LEDiL Development Kit, Including OSOLON® SSL 80, 4000K LED Engine, Driver, Heatsink, TIM Screws and a selection of lenses
ILK-LEDIL-OSLON-SELECTOR-04.	LEDiL Development Kit, Including OSOLON® SSL 80, SSL 150, and Square, 4000K LED Engines, Driver, Heatsink, TIM, Screws and a selection of LEDiL lenses

### KIT CONTENTS – LEDIL SELECTOR KITS ARE SUPPLIED UNASSEMBLED

#### ILK-LEDIL-OSLON-SELECTOR-01.

- 1 x LEDiL Selector Light Engine using Osram OSOLON® SSL 150 4000K – ILR-OW01-NUWH-LEDIL-SC221.
- 1 x Heatsink – ILA-HSINK-78X46X25MM-BLK
- 1 x LED Driver - IZC070-004F-4065C-SAL
- 1 x Thermal Interface Material – ILA-TIM-LEDIL-1A
- 2 x M3 Fixing Screws

#### ILK-LEDIL-OSLON-SELECTOR-02.

- 1 x LEDiL Selector Light Engine using Osram OSOLON® Square 4000K – ILR-OO01-NUWH-LEDIL-SC221.
- 1 x Heatsink – ILA-HSINK-78X46X25MM-BLK
- 1 x LED Driver - IZC070-004F-4065C-SAL
- 1 x Thermal Interface Material – ILA-TIM-LEDIL-1A
- 2 x M3 Fixing Screws

#### ILK-LEDIL-OSLON-SELECTOR-03.

- 1 x LEDiL Selector Light Engine using Osram OSOLON® SSL 80 4000K – ILR-ON01-NUWH-LEDIL-SC221.
- 1 x Heatsink – ILA-HSINK-78X46X25MM-BLK
- 1 x LED Driver - IZC070-004F-4065C-SAL
- 1 x Thermal Interface Material – ILA-TIM-LEDIL-1A
- 2 x M3 Fixing Screws

#### ILK-LEDIL-OSLON-SELECTOR-04.

- 1 x LEDiL Selector Light Engine using Osram OSOLON® SSL 150 4000K – ILR-OW01-NUWH-LEDIL-SC221.
- 1 x LEDiL Selector Light Engine using Osram OSOLON® Square 4000K – ILR-OO01-NUWH-LEDIL-SC221.
- 1 x LEDiL Selector Light Engine using Osram OSOLON® SSL 80 4000K – ILR-ON01-NUWH-LEDIL-SC221.
- 1 x Heatsink – ILA-HSINK-78X46X25MM-BLK
- 1 x LED Driver - IZC070-004F-4065C-SAL
- 1 x Thermal Interface Material – ILA-TIM-LEDIL-1A
- 2 x M3 Fixing Screws

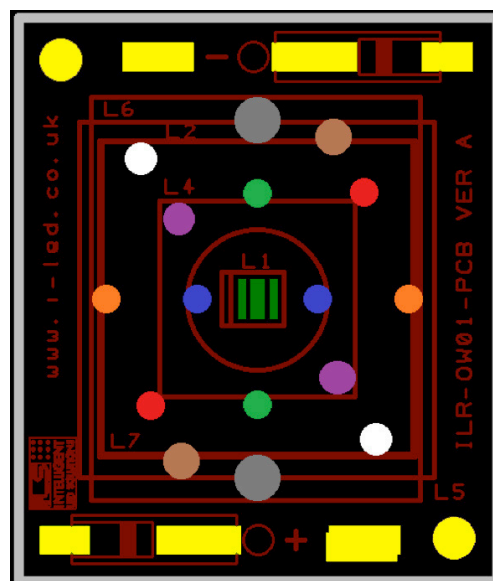
## AS STANDARD ALL KITS CONTAIN THE FOLLOWING LENSES

RS Part Number	LEDiL Part
710-7329	CA10932_FLARE-B
891-0595	CA14601_VERONICA-SQ-MINI-RS
891-0586	CA14602_VERONICA-SQ-MINI-O
786-1868	CA12374_TINA2-RS
710-6739	FA11205-TINA-D-OSL
892-2771	CA12427_TINA3-WW
785-1498	CA12889_STRADA-SQ-T-DWC
892-2832	CA13726_VERONICA-SQ-O

## OTHER COMPATIBLE LEDIL FAMILIES FOR THE LEDIL SELECTOR ARE:

Family	Locator Pin
AMELIA	RED
BILLIE	BLUE
CRYSTAL	RED
EMERALD	BLUE
EMILY	BLUE
EMMA	BLUE
EVA	NO HOLE NEEDED
EYA	NO HOLE NEEDED
FLARE	WHITE
FLARE-MINI	BLUE
FLARE-MAXI	ORANGE
FLORENTINA-1	RED
FRIDA	BLUE
HEIDI	BLUE
IRENE	BLUE
IRINA	BLUE
IRIS	BLUE
JULIA	BLUE
KIKI	ORANGE
LARISA	BLUE
LAURA	BLUE
LEILA	BLUE
LISA2	BLUE
LOTTA	BLUE
MIRELLA	BLUE
OONA	NO HOLE NEEDED
REGINA	BLUE
RITA	BLUE
ROSE	GREEN
SEANNA	NO HOLE NEEDED
SIRI	BLUE
STRADA-A	BLUE

Family	Locator Pin
STRADA-C2	BLUE
STRADA-D	BLUE
STRADA FORWARD	BLUE
STRADA-K	BLUE
STRADA-S	BLUE
STRADA-SQ	ORANGE
STRADA-T	BLUE
STRADELLA	BLUE
TINA	BLUE
TINA2	BLUE
TINA3	BLUE
TWIDDLE	BLUE
VERONICA	GREEN
VERONICA-MINI	PURPLE
VERONICA-SQUARE	RED
VERONICA-ROUND	ORANGE
ZOWIE	NO HOLE NEEDED



## POWERING UP THE LEDIL SELECTOR KIT

Before connecting the LED driver to the mains make sure that the LED board is connected to the PCB. Connecting the PCB to a live LED Driver could cause hot plugging which could cause damage to the LED. Connect the red wire of the driver to the + connector and black wire to the - connector.

### IMPORTANT INFORMATION AND PRECAUTIONS



The LEDiL selector, when powered up are very bright. Thus it is advised that you do not look directly at it. Turn the LED engine away from you and do not shine into the eyes of others.



DO NOT connect directly to mains (100-240V) - always use the driver provided. DO NOT hot plug into the driver.



Do not operate the LEDiL selector with a Power Supply with unlimited current. Connection to constant voltage Power Supplies that are not current limited may cause the OSRON® LED to consume current above the specified maximum and cause failure or irreparable damage.



DO NOT TOUCH or PUSH on the LED as this can cause irreparable damage.



LEDs, when operated, can reach high temperatures thus there is risk of injury if they are touched.

## SAFETY INFORMATION



The LED module itself and all its components must not be mechanically stressed.



Assembly must not damage or destroy conducting paths on the circuit board.



The mounting of the module is carried out by attaching it at the mounting holes. Metal mounting screws must be insulated with synthetic washers to prevent circuit board damage and possible short circuiting.



To avoid mechanical damage to the connecting cables, the boards should be attached securely to the intended substrate. Heavy vibration should be avoided.



Observe correct polarity! Depending on the product, incorrect polarity will lead to emission of red or no light. The module can be destroyed!



Pay attention to standard ESD precautions when installing the LEDiL Selector.



The LEDiL Selector, as manufactured, have no conformal coating and therefore offer no inherent protection against corrosion.



In order to optimise the thermal management, the metal surface needs to be clean (dirt and oil free) and planar for the best contact with the LED module. A thermal grease or heat transfer material is highly recommended.



The evaluation of eye safety occurs according to the standard IEC 62471:2006 ("photobiological safety of lamps and lamp systems"). Within the risk grouping system of this CIE standard, the LED specified in this data sheet falls into the class "moderate risk" (exposure time 0.25s). Under real circumstances (for exposure time, eye pupils, observation distance), it is assumed that no endangerment to the eye exists from these devices. As a matter of principle, however, it should be mentioned that intense light sources have a high secondary exposure potential due to their blinding effect. As is also true when viewing other bright light sources (e.g. headlights), temporary reduction in visual acuity and afterimages can occur, leading to irritation, annoyance, visual impairment and even accidents, depending on the situation.

## FURTHER INFORMATION

The values contained in this datasheet can change due to technical innovation. Any such changes will be made without separate notification.

If you require further assistance or have an specific or custom enquiries, please contact the ILS team via email or phone. Alternatively please visit our website for more product info and to see our full ranges.



Unit 2, Berkshire Business Centre,  
Berkshire Drive, Thatcham,  
Berkshire, RG19 4EW  
+44 (0)1635 294606  
info@i-led.co.uk  
[www.i-led.co.uk](http://www.i-led.co.uk)

## ABOUT ILS

ILS offers a high level of technical skill, professionalism and commercial understanding to companies requiring market leading optoelectronics solutions. Offering conceptual advice, electronics design and manufacturing capability, we use high quality production resources both in house and in Asia, providing project support from prototyping to mass production. We also understand the need to provide cost effective solutions and we do so using high quality components to ensure that the end product's reliability and quality is uncompromised. Apart from LEDs in the visible spectrum, we have a wide range of Infrared, UV LEDs, UV tubes, and Lasers.

ILS is a division of Intelligent Group Solutions Ltd (IGS) a well-established respected industry leading Optoelectronics solutions provider. Much of IGS' business comes from providing semi-custom or custom products both in component and sub-assembly form. This comes from providing design support and prototyping within the European market place. With the capability to deliver production displays to wherever in the world that the customer's manufacturing or assembly is being undertaken.

## INTELLIGENT GROUP SOLUTIONS DIVISIONS

