

# GN 709.15 | Locking elements with threaded pin

Stainless steel



## MATERIAL

Hardened AISI 431 stainless steel.

## ELASTIC ELEMENT

Polyurethane (PUR).

## STANDARD EXECUTIONS

AISI 420C nickel-plated stainless steel ball:

- **GN 709.15-B**: ball with smooth and flat face, not reversible.
- **GN 709.15-BR**: ball with smooth and flat face, not reversible, with automatic return.

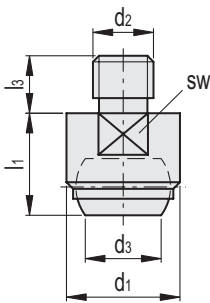
Nickel-plated steel ball:

- **GN 709.15-RH**: ball with knurled and flat face, not reversible.
- **GN 709.15-RRH**: ball with knurled and flat face, not reversible, with automatic return.

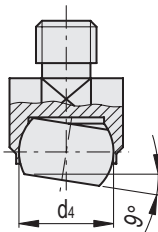
## FEATURES AND APPLICATIONS

GN 709.15 clamping elements are used as mobile supports or for clamping workpieces.

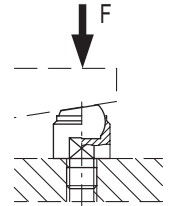
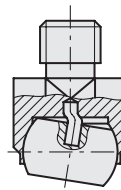
Maximum inclination of the ball plane = 9°.



GN 709.15-B



GN 709.15-BR



## GN 709.15-B



Code	Description	d1	d2	d3	d4	l1 ±0.02	l3	sw	Max. static load F [kN]	⚖️
GN.76251	GN 709.15-13-M6-B	13	M6	7.2	10	13	8	11	10	13
GN.76253	GN 709.15-13-M8-B	13	M8	7.2	10	13	8	11	10	13
GN.76261	GN 709.15-20-M8-B	20	M8	10.5	16	18	10	17	25	38
GN.76263	GN 709.15-20-M10-B	20	M10	10.5	16	18	10	17	25	40
GN.76265	GN 709.15-20-M12-B	20	M12	10.5	16	18	12	17	25	43
GN.76271	GN 709.15-30-M16-B	30	M16	20	25	27	16	27	90	150
GN.76276	GN 709.15-50-M20-B	50	M20	34.5	40	35	20	41	165	488
GN.76281	GN 709.15-50-M24-B	50	M24	34.5	40	35	24	41	165	512

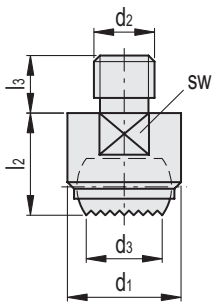
## GN 709.15-BR



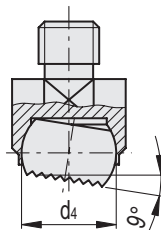
Code	Description	d1	d2	d3	d4	l1 ±0.02	l3	sw	Max. static load F [kN]	⚖️
GN.76252	GN 709.15-13-M6-BR	13	M6	7.2	10	13	8	11	10	12
GN.76256	GN 709.15-13-M8-BR	13	M8	7.2	10	13	8	11	10	13
GN.76259	GN 709.15-20-M8-BR	20	M8	10.5	16	18	10	17	25	37
GN.76264	GN 709.15-20-M10-BR	20	M10	10.5	16	18	10	17	25	38
GN.76268	GN 709.15-20-M12-BR	20	M12	10.5	16	18	12	17	25	42
GN.76272	GN 709.15-30-M16-BR	30	M16	20	25	27	16	27	90	147
GN.76277	GN 709.15-50-M20-BR	50	M20	34.5	40	35	20	41	165	482
GN.76282	GN 709.15-50-M24-BR	50	M24	34.5	40	35	24	41	165	511

Machine elements

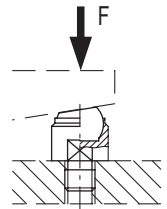
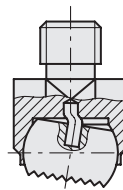
912



GN 709.15-RH



GN 709.15-RRH



## GN 709.15-RH

INOX STAINLESS STEEL

Code	Description	d1	d2	d3	d4	l2 ±0.1	l3	sw	Max. static load F [kN]	⚖️
GN.76254	GN 709.15-13-M6-RH	13	M6	8.3	10	13	8	11	10	14
GN.76257	GN 709.15-13-M8-RH	13	M8	8.3	10	13	8	11	10	16
GN.76260	GN 709.15-20-M8-RH	20	M8	12.8	16	18	10	17	25	49
GN.76266	GN 709.15-20-M10-RH	20	M10	12.8	16	18	10	17	25	51
GN.76269	GN 709.15-20-M12-RH	20	M12	12.8	16	18	12	17	25	54
GN.76273	GN 709.15-30-M16-RH	30	M16	20	25	27	16	27	90	187
GN.76278	GN 709.15-50-M20-RH	50	M20	34.5	40	35	20	41	165	632
GN.76283	GN 709.15-50-M24-RH	50	M24	34.5	40	35	24	41	165	660

## GN 709.15-RRH

INOX STAINLESS STEEL

Code	Description	d1	d2	d3	d4	l2 ±0.1	l3	sw	Max. static load F [kN]	⚖️
GN.76255	GN 709.15-13-M6-RRH	13	M6	8.3	10	13	8	11	10	14
GN.76258	GN 709.15-13-M8-RRH	13	M8	8.3	10	13	8	11	10	16
GN.76262	GN 709.15-20-M8-RRH	20	M8	10.5	16	18	10	17	25	48
GN.76267	GN 709.15-20-M10-RRH	20	M10	10.5	16	18	10	17	25	49
GN.76270	GN 709.15-20-M12-RRH	20	M12	10.5	16	18	12	17	25	53
GN.76274	GN 709.15-30-M16-RRH	30	M16	20	25	27	16	27	90	190
GN.76279	GN 709.15-50-M20-RRH	50	M20	34.5	40	35	20	41	165	639
GN.76284	GN 709.15-50-M24-RRH	50	M24	34.5	40	35	24	41	165	637