

# TN-EX | Plugs

Technopolymer



## MATERIAL

Glass-fibre reinforced polyamide based (PA) technopolymer, RAL 1021 yellow colour, matte finish.

## PACKING RING

NBR synthetic rubber.

## MAXIMUM CONTINUOUS WORKING TEMPERATURE

80°C.

## ATEX DIRECTIVE COMPLIANCE

TN-EX series plugs comply with the Essential Health and Safety Requirements of the European ATEX Directive 2014/34/ EU (explosive atmospheres) for Group II devices, category 2GD. Plugs have "h" protection mode and can be mounted in devices protected by means of "immersion in liquid (K)", without lowering their protection degree. II 2GD Ex h X: is TN-EX plugs identification marked on the product according to ATEX directive

II: group of devices / components suitable for use in surface industry except for mines.

2: ATEX category corresponding to "high" protection level

G: explosive atmosphere of flammable gases or vapors.

D: explosive atmosphere of combustible dusts.

Ex: device / component protected against the ignition of explosive atmospheres.

h: protection mode for non-electric devices / components.

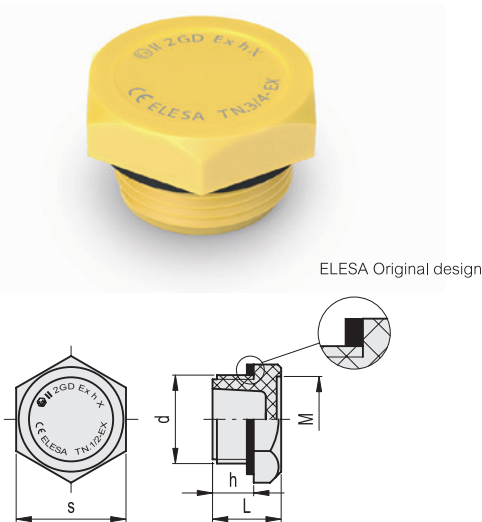
X: special conditions and limitation of use (see Instructions for use).

Ambient and/or fluid temperature:  $-20 \div +80$  °C

The documentation concerning the conformity of this product to the European Directives above mentioned and the instructions for use are integral parts of the article itself.

## TECHNICAL DATA

The tightening torque recommended in the table prevents accidental loosening of the article, in addition to guaranteeing an optimal seal.



ELESa Original design

Code	Description	d	h	s	L	M	Tightening torque [Nm]	⚖️
58296-R-EX	TN.3/8-EX	G 3/8	9	22	16	17	8+10	5
58297-R-EX	TN.1/2-EX	G 1/2	11	26	18	20.5	8+10	8
58298-R-EX	TN.3/4-EX	G 3/4	12	32	20	25	10+12	14

# TCE. | Plugs

with hexagon socket, technopolymer



## MATERIAL

Glass-fibre reinforced polyamide based (PA) technopolymer, black colour, matte finish.

## PACKING RING

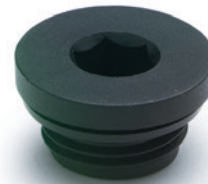
NBR synthetic rubber.

## MAXIMUM CONTINUOUS WORKING TEMPERATURE

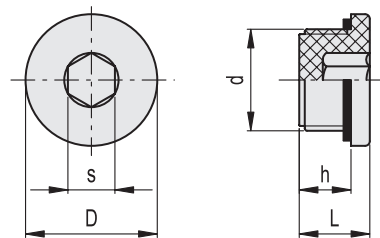
100°C.

## TECHNICAL DATA

The tightening torque indicated in the table guarantees an optimal tightness, keeping the packing ring in the correct position.



ELESa Original design



Code	Description	d	h	s	D	L	Tightening torque [Nm]	⚖️
161033	TCE.1/4	G 1/4	9	6	20	12	3	4
161034	TCE.3/8	G 3/8	9	8	22	13	3+5	5
161035	TCE.1/2	G 1/2	11	10	28	15	3+4	8
161036	TCE.3/4	G 3/4	12	12	32	16.5	3+5	14

- 1
- 2
- 3
- 4
- 5
- 6
- 7
- 8
- 9
- 10
- 11
- 12
- 13
- 14
- 15
- 16
- 17
- 18

Accessories for hydraulic systems