



Keystone Shielded Solution – EMEA

Shielded Copper Cable

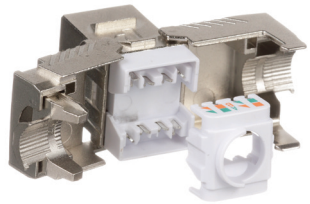
- Shielded design provides exceptional performance up to 500 MHz (Category 6A)
- Shielding significantly reduces near-end and far-end alien crosstalk between adjacent cables
- Shielded Category 6A F/FTP 23 AWG cable is EuroClass Cca-s1a-d1-a1



Foil shield in cable prevents unwanted alien crosstalk

Keystone Shielded Jack Modules

- Delta component compliant Category 6A jack
- Tool-less termination utilizes a wire cap secured inside a die-cast housing
- The die-cast housing provides a robust design to protect against physical and electromagnetic damage



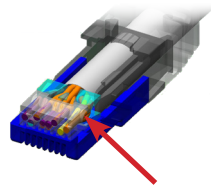
Keystone All Metal Shielded Modular Patch Panels

- Modular metal design with integrated shielding allows Keystone jacks to easily snap in, providing seamless integration with Panduit™ StructuredGround™ Grounding System
- A built-in strain relief bar secures individual cables and provides proper cable support
- Dedicated areas allow for port and panel identification; labels are covered in a clear plastic window to protect against damage



Shielded Patch Cords

- Category 6A F/UTP 26 AWG LSZH/CM stranded cable patch cord
- 100% production tested for wire map, NEXT, and return loss
- Label provides identification of performance level, length, and quality control number for future traceability



Integral pair manager ensures consistency and high performance

Keystone Faceplates

- Keystone modules snap in and out of the 86mm X 86mm faceplate for easy moves, adds and changes
- 45° sloped ports facilitate cable flow and provide additional cable room
- The spring-loaded shutter keeps jacks protected from dust and debris when not in use





Keystone Shielded Solution



NFFY6X04BU-HED



STP28X1MBU



KJS6X88TC



KP24WSBL



KPA24WSBL



KFPL86S2SWH

Part Number	Description	Std. Pkg. Qty.	Std. Ctn. Qty.
NFFY6X04BU-HED	NetKey® Copper Cable, Cat. 6A, 4-Pair, 23 AWG, F/FTP, EuroClass Cca-s1a-d1-a1, Blue, 500m/1640 ft.	1	18
STP28X*	Cat. 6A 28AWG shielded patch cord, CM/LSZH, Blue, 1 meter.	1	10
KJS6X88TC	Category 6A, RJ45, 10 Gb/s, 8-position, 8-wire keystone shielded jack module.	1	50
KP24WSBL	Keystone 24-port modular all metal shielded patch panel with built-in strain relief bar, Black, 1 RU.	1	10
KPS24BL	Keystone 24-port flat shielded panel without strain relief bar, Black, 1 RU.	1	10
KPA24WSBL	Keystone 24-port angled panel with strain relief bar, Black, 1 RU.	1	10
KPA48WSBL	Keystone 48-port angled panel with strain relief bar, Black, 2 RU.	1	10
KP24APWSBL	Keystone shielded 24-port, modular flat mount all metal patch panel with angled jack ports and strain relief bar.	1	10
KFPL86S2SWH	Keystone 86mm x 86mm faceplate frame with two 25mm x 50mm sloped shuttered insert. Accepts two Keystone modules, includes labels and label covers, White.	1	10

*For other colors and lengths, please visit www.panduit.com

PANDUIT™

phone +44 (0) 208 601 7200
 EMEA-CustomerServices@panduit.com
www.panduit.com

Panduit CBC London
 6 Broad Street Place
 London
 EC2M 7JH
 UK