



### Model Number

**NEN10-12GM50-E2-V1**

### Features

- Increased operating distance
- 10 mm non-flush

### Accessories

#### BF 12

Mounting flange, 12 mm

#### V1-G

Female connector, M12, 4-pin, field attachable

#### V1-W

Female connector, M12, 4-pin, field attachable

#### V1-G-2M-PUR

Female cordset, M12, 4-pin, PUR cable

#### V1-W-2M-PUR

Female cordset, M12, 4-pin, PUR cable

## Technical Data

### General specifications

Switching function	Normally open (NO)
Output type	PNP
Rated operating distance	$s_n$ 10 mm
Installation	non-flush
Output polarity	DC
Assured operating distance	$s_a$ 0 ... 8.1 mm
Actuating element	mild steel, e. g. 1.0037, SR235JR (formerly St37-2) 30 mm x 30 mm x 1 mm
Reduction factor $r_{Al}$	0.45
Reduction factor $r_{Cu}$	0.4
Reduction factor $r_{304}$	0.75
Reduction factor $r_{Brass}$	0.45
Output type	3-wire

### Nominal ratings

Installation conditions	
A	in steel 1.0037 (St37): 10 mm
B	12 mm
C	30 mm
F	42 mm
Operating voltage	$U_B$ 10 ... 30 V DC
Switching frequency	$f$ 0 ... 600 Hz
Hysteresis	H 0.06 ... 1 mm
Reverse polarity protection	yes
Short-circuit protection	pulsing
Overload resistance	yes
Wire breakage protection	yes
Surge suppression	yes
Ripple	10 %
Voltage drop	$U_d$ $\leq 2$ V
Repeat accuracy	R 0.3 mm
Operating current	$I_L$ 0 ... 200 mA, above 70°C $\leq 150$ mA
Off-state current	$I_r$ $\leq 10$ $\mu$ A
No-load supply current	$I_0$ $\leq 15$ mA
Time delay before availability	$t_v$ $\leq 50$ ms
Switching state indicator	LED, yellow

### Functional safety related parameters

MTTF <sub>d</sub>	1740 a
Mission Time (T <sub>M</sub> )	20 a
Diagnostic Coverage (DC)	0 %

### Ambient conditions

Ambient temperature	-25 ... 85 °C (-13 ... 185 °F)
Storage temperature	-40 ... 85 °C (-40 ... 185 °F)

### Mechanical specifications

Connection type	Connector M12 x 1, 4-pin
Housing material	brass, nickel-plated
Sensing face	PBT
Degree of protection	IP67
Mass	20 g
Tightening torque, fastening screws	max. 10 Nm

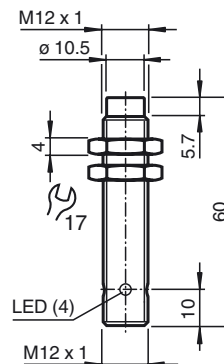
### Compliance with standards and directives

Standard conformity	
Standards	EN 60947-5-2:2007 IEC 60947-5-2:2007

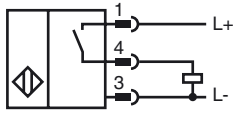
### Approvals and certificates

EAC conformity	TR CU 020/2011
UL approval	cULus Listed, General Purpose
CCC approval	CCC approval / marking not required for products rated $\leq 36$ V

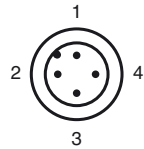
## Dimensions



**Electrical Connection**



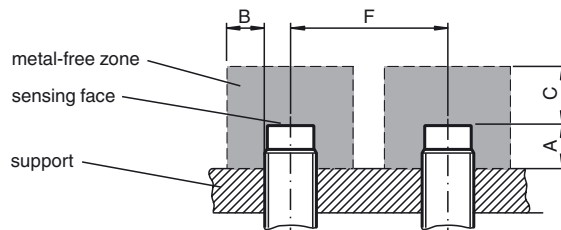
**Pinout**



Wire colors in accordance with EN 60947-5-2

1	BN	(brown)
2	WH	(white)
3	BU	(blue)
4	BK	(black)

**Installation Conditions**



Release date: 2017-08-28 09:57 Date of issue: 2017-08-28 231723\_eng.xml