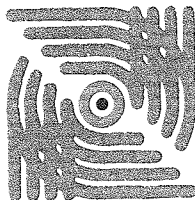


A.N.C.I. Servizi S.r.l.

Sede legale e amministrativa
20149 MILANO
Via Monte Rosa, 21
Tel. 02.438291
Fax 02.48005833
E-mail: progettispeciali@anci-calzature.com
Cap. Soc.: € 10.400 i.v.
C.F./P.I.: 07199040150
Reg. Imprese n° 229059
Trib. di Milano
R.E.A. n° 1147818



CIMAC

Centro Italiano
Materiali di Applicazione
Calzaturiera

Sede operativa

C.so G. Brodolini, 19 - 27029 VIGEVANO (PV) - Tel. 0381.84722 - Fax 0381.73393
E-mail: ce@cimacpv.it - Internet: <http://www.cimacpv.it>

According to the EEC instructions 89/686 dated 21st of December 1989, concerning the standardisation of legislation of all member countries with regard to individual protection systems and the relative legislative decree dated 4th of December 1992, N° 475,

A.N.C.I. servizi s.r.l. - C.I.M.A.C. section
CENTRO ITALIANO MATERIALI DI APPLICAZIONE CALZATURIERA
Authorized with the decree issued by the Ministry of Industry of the Italian Republic
on the 11th of October 2000 - Community Identification N° 0465

grants:

EC TYPE-EXAMINATION CERTIFICATE
N° 0161/16858/10

for the following model of personal protective equipment:

Low shoe - art. "53 6989.8 UVEX MOTION STYLE"

Manufacturer (see notes):

UVEX ARBEITSSCHUTZ GMBH

WÜRZBURGER STRASSE, 181-189
90766 FÜRTH/BAY
DEUTSCHLAND

Vigevano, 30th June 2010

Technical Manager of the Centre
Ing. Giuseppe Bellotti



1. Description of personal protective equipment:

PPE Category: second category

Type of PPE: safety footwear for professional use according to EN ISO 20345:2004+A1:2007 standard

Design: A – Low shoe

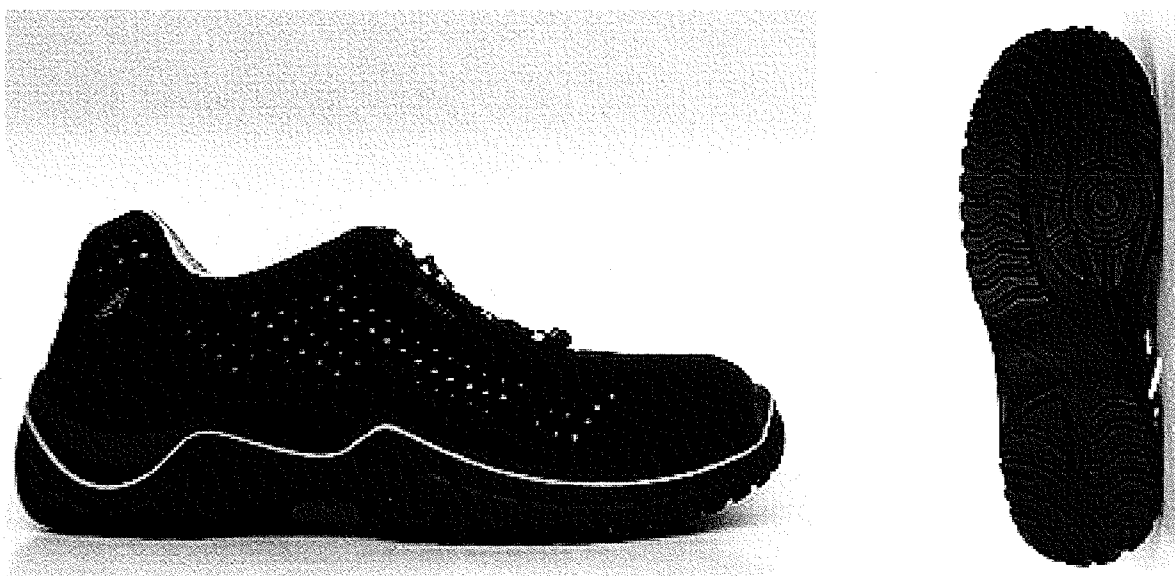
Classification: I - Footwear made from leather and other materials, excluding all-rubber or all-polymeric footwear

Size range: from 36 to 48 (French size)

Identification of last: KK2 MODULE II NR.90506

Manufacturing process: Injection

The footwear has a removable insock cod. "234"





2. The tests and the examinations to verify the conformity of the article (in compliance with art. 10 of Directive 89/686/CEE) are performed applying the following harmonized standards and the Directive 91/338/CEE of 18th June 1991, 2004/21/CE of 25th February 2004 and 94/27/CE of 30th June 1994:

- EN ISO 20344:2004+A1:2007 – Personal protective equipment – Test methods for footwear.
- EN ISO 20345:2004+A1:2007 – Personal protective equipment – Safety footwear.

3. The results of tests and examinations are contained in the following test reports:

C.I.M.A.C.	RP 20103347	dated 30 th	June	2010
C.I.M.A.C.	RP 20103348	dated 30 th	June	2010

4. Requirements of the personal protective equipment:

The low shoe art. "53 6989.8 UVEX MOTION STYLE" complies with:

the basic requirements for safety footwear specified in table 2 of EN ISO 20345:2004+A1:2007 standard;

the additional requirements for special applications specified in table 14 of EN ISO 20345:2004+A1:2007 standard:
(Category S1)

- heel area closed;
- antistatic properties;
- energy absorption of seat region;
- fuel oil resistant outsole;
- cleated outsole.

The shoe complies with what prescribed by EN ISO 20345:2004/A1:2007 standard concerning the slip-resistance of the outsole, "SRC" requirement.

The leather and/or textile components of the footwear comply with what prescribed by the Directive 2004/21/EC relating to restrictions on the marketing and use of certain dangerous substances and preparations (azocolourants).



5. Marking of the personal protective equipment:

The following information is provided on the inner side of the footwear:

- the “CE” mark
- date of manufacture (month and year)
- manufacturer’s type designation: 53 6989.8 UVEX MOTION STYLE
- the number and year of the reference European standard: EN ISO 20345:2007 (see notes)
- the symbols appropriate to the protection provided: S1–SRC (see notes)
- manufacturer’s identification mark: “UVEX”
- size.

6. Notes:

- The manufacturer is the one assuming the responsibility of design and fabrication of a product included in the Directive, in order to throw it in the market.
- The marking for the number and year of the reference European standard and the symbols appropriate to the protection provided should be adjacent to one another.
- This EC Type-Examination Certificate must be kept by the manufacturer, in order to produce it, on request, for the control body or safety control administration.
- The content of this EC Type-Examination Certificate is referred to the tested personal protective equipment only.
- This EC Type-Examination Certificate may be integrally duplicated; the copy must be faithful, legible (if pint size) and must contain the bold caption “TRUE COPY”.
- The manufacturer should inform ANCI Servizi srl – Sezione CIMAC for any modification to the product, to the place/process of manufacturing and, if relevant (III category PPE), to the quality system if this compromises the conformity of the product to the essential requirements or other provisions of the Directive 89/686/EEC.
- The manufacturer should report all the complaints relating to the conformity of the certified product to the requirements of the reference harmonized standards and supply these reports on request of ANCI Servizi srl – Sezione CIMAC.
- The manufacturer should implement appropriate corrective actions when nonconforming product to the essential requirements of the EC certification are identified.

Model EC Declaration of Conformity

The manufacturer or his authorized representative established in the Community:

UVEX Arbeitsschutz GmbH

Würzburger Str. 181-189

D-90766 Fürth

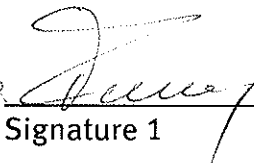
declares that the new PPE described hereafter

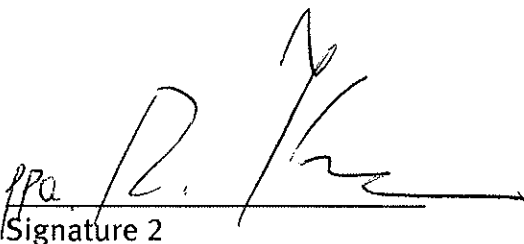
Low shoe Article 53 6989.8

is in conformity with the provisions of Council Directive 89/686/EEC and is identical to
the PPE which is the subject of EC certificate of conformity n° 0161/16858/10

A.N.C.I. Servizi srl – Sezione C.I.M.A.C. – c/so G.Brodolini n° 19 – I-27029 Vigevano (PV)

Fürth, on 20.07.2010

ppa. 
Signature 1

ppa. 
Signature 2