

**Business Unit:** HARTING Electric

**PCN/22/012/C+N-US**
**Product Range:** Han-Modular®

**Date:** 06/14/2022

**Title:** Han 200A Module Axial Screw mating side

### Details of the Product Changes

#### 1. Concerned Part Numbers

09140012761	09140012762	09140012763	09140012767
09140012768	09140012771	09140012772	09140012775

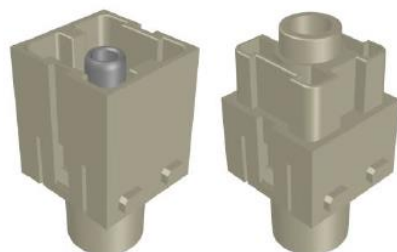
#### 2. Description of Changes/News

Improvement of the Han® 200A module axial screw mating side ensures mating compatibility with all other 200A and 300A modules.

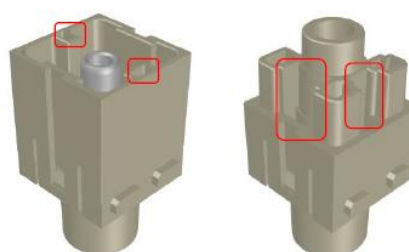
The modified 200A axial module will also be backwards mating compatible with the present 200A axial module.

The changes are marked red at the below drawings.

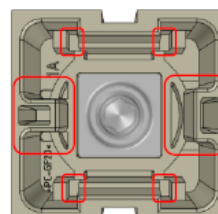
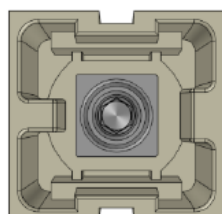
Current 200A axial module



New 200A axial module



The new 200A axial screw male module will get some additional depending, marked red.



Additionally, some outer edges will be smoothed a little to improve the handling.

**In case of questions or concerns, please do not hesitate to contact our technical support.**

Technical Support E-mail: [TechSupportUS@HARTING.com](mailto:TechSupportUS@HARTING.com)

Technical Support Phone Number: 866-278-0306 (Select option 3 for technical support)

 <b>HARTING</b> Pushing Performance	<b>HARTING</b> <b>Product Change Notification</b>	<b>PCN</b>
--	--	------------

<b>3. Impact on Product Specification</b>
The modification has no impact on the specification and application of the 200A module.
<b>4. Scheduled Date of Implementation</b>
January 2023
<b>5. Identification of Change</b>
New revision level
<b>6. Datasheet</b>
For updated specifications and drawings, please check the eCatalogue.

In case of questions or concerns, please do not hesitate to contact our technical support.

Technical Support E-mail: [TechSupportUS@HARTING.com](mailto:TechSupportUS@HARTING.com)

Technical Support Phone Number: 866-278-0306 (Select option 3 for technical support)