

# 7000 Push Button Switches 16A 250Vac



16(4)A 250Vac T125  
8(8)A 250Vac T85



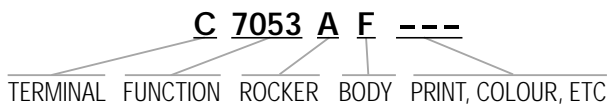
UL CSA 16A Non Ind, 250Vac 1hp, 125Vac 1/2hp  
UL65°C, file no. E45221, CSA file no. LR10990



Inrush 35A to EN61058-1 & 16A 28V dc

3mm contact gap

Technical data on pages 4 & 5 (switches), 66 (indicators)



TERMINAL	FUNCTION			ACTUATOR	
<b>C</b>  6.3 x 0.8	<b>7000</b>		Single pole ON - OFF	<b>A Round actuator</b> shown in F body 	
	<b>7001</b>		Single pole ON - OFF (momentary ON)		
	<b>7003</b>		Single pole ON - OFF with light	<b>A Round actuator</b> shown in G body 	
	<b>7004</b>		Single pole ON - OFF (momentary On) with light		
	<b>7050</b>		Double pole ON - OFF		
	<b>H</b>  4.8 x 0.8	<b>7051</b>		Double pole ON - OFF (momentary On)	<b>S Rectangular actuator</b> Shown in "A" body N/A for 7030 
		<b>7053</b>		Double pole ON - OFF with light	
<b>7054</b>			Double pole ON - OFF (momentary On) with light		
<b>7030</b>			Indicator		



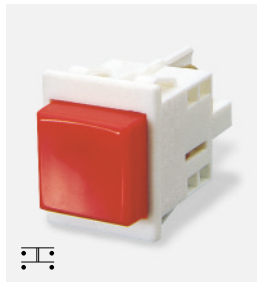
C7000AF ---



C7001AF ---



C7003AF ---



C7050SA ---



C7053AG ---

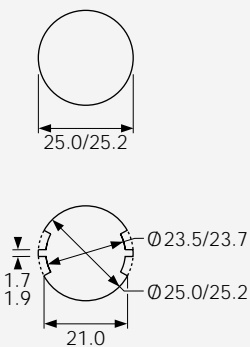


C7030AH ---

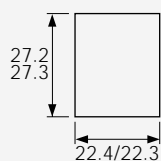
**BODY**

Panel cut-outs

**F H G** Body types fit either cut-out



**A**



Cut-outs must be punched in the direction of insertion

**OPTIONS**

**Finish**

Matt finish is standard on bodies  
Gloss finish is standard on actuators

**Colour**

Call factory for custom colours  
A full range is available for large orders

**Legend printing**

A wide range is available or call the factory for custom legends

**Lamp voltage**

Call factory for details of other available voltages

**Protective housing (E)**

(designed to IP65)  
Covers are available for round body styles, call factory for details

**DIMENSIONS (mm)**

**Panel thickness:**

**A** 0.8 - 2.5mm  
**F,G,H** 0.8 - 5.0mm

