

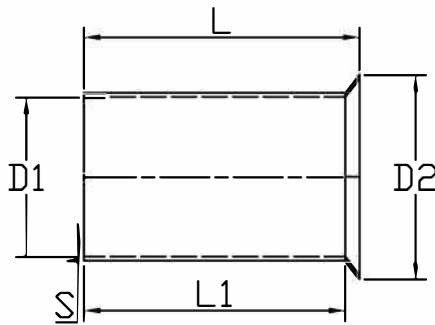
# Non-Insulated Cord-End Sleeve



## Specification

Terminal Material	Tin Plated Copper Tube
Insulation Material	Non-insulated
Max Current	12 A
Wire Range	20 AWG

## Drawing



L	8 mm
D1	1.2 mm
D2	2.2 mm
L1	7.3 mm
S	0.15 mm

Art. Nr.  
RND 465-01368