

Lens

for Digital Camera and weQube with C mount

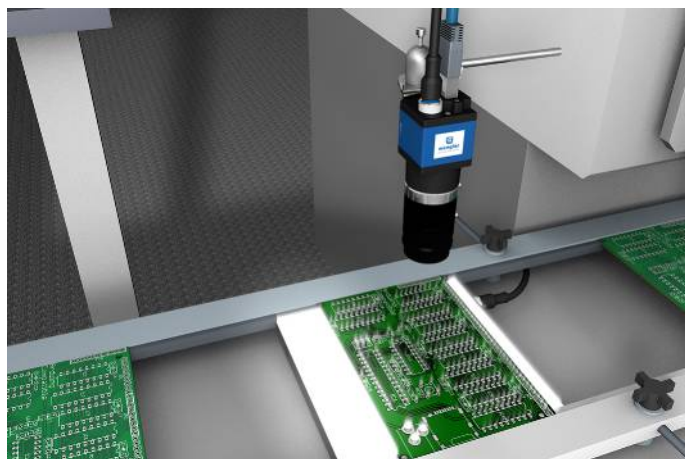
LAC35-16-K02

Part Number



- Adjustable aperture
- Adjustable focus
- Fixed focal length lens with C mount threaded connection

Fixed focal length lenses with C mount threaded connection can be used, for example, on Smart Cameras with C mount connection. Adjustable f-stops and adjustable focus offer greatest possible variability for the implementation of complex vision applications.



Technical Data

Optical Data

Focal Distance 35 mm

Mechanical Data

Lens thread C-Mount

Aperture adjustable

Aperture arrestable

Adjustable Range Aperture F 1,6...22

Minimum object distance 250 mm

Filter Screw Size M25,5 × 0,5 mm

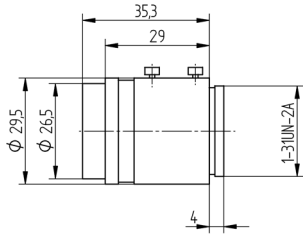
Temperature Range -10...50 °C

Packaging unit 1 Piece

Complementary Products

Allen Key with Threaded Pins Z0070

Protective Housing ZSZ-0x-01



All dimensions in mm (1 mm = 0.03937 Inch)

Field of vision for Smart Cameras with C-Mount

Working Distance	400 mm	600 mm	1000 mm
Visual Field	47 × 30	72 × 46	124 × 79

