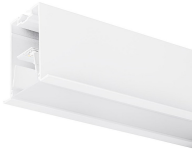


## Mini Continuum II - Direct - Trim - Extensions

### MC2 TRIM 0.6M 4K DALI WHT OPAL

### 2093160



#### Product features

- 2093160 MC2 TRIM 0.6M 4K DALI WHT OPAL Continuous lines of LED light, white RAL 9016, direct distribution, extension module, trim detail for plasterboard ceilings, suitable for recessed installation either horizontally or vertically, various accessories available, compact and minimalist design based on the Golden Mean, ideal for offices, meeting rooms, corridors, education facilities, museums and libraries, extruded aluminium body, diffuser: opal, colour temperature: 4000K neutral white, total system power: 10W, total fixture output: 1150lm, luminaire efficacy: 115lm/W, LOR: 100%, colour rendering: Ra >80, LED Chromacity: 3 step MacAdam ellipse, lifespan: 66,000 hours L90B10, IR/UV free light source without heat radiation, operating voltage: 220-240V / 50-60Hz, drive current: 400mA, electronic driver, DALI dimmable, electrical protection: CLASS I, IP20, suitable for internal environment only.



#### PRODUCT OVERVIEW

Product name	MC2 TRIM 0.6M 4K DALI WHT OPAL
Technology	LED
Housing	Aluminium
Mount	Ceiling recessed mounting
Environment	Internal
General application	Education, Hospitality, Office, Retail
ETIM Class	EC002557
E-number FI	4237858
Warranty	5 years
Fixture luminous flux (lm)	1150
Luminaire efficacy (lm/W)	115
LOR (%)	100
Colour temperature (K)	4000
Light colour	Neutral White
CRI (Ra)	80
Colour Variation Initial (SDCM)	SDCM3
Glare control	< 17
Photobiological Risk Group	RG0
Total power consumption (W)	10
Electrical protection	Class I
Control gear type	Electronic ballast
Dimming method	DALI
Minimum dimming level (%)	1
Housing colour	White
IP rating	IP20
IK rating	IK02
Product EAN number	5025768931606

## Mini Continuum II - Direct - Trim - Extensions

MC2 TRIM 0.6M 4K DALI WHT OPAL  
2093160

### DATA TABLE

#### General data

<b>Product name</b>	MC2 TRIM 0.6M 4K DALI WHT OPAL
<b>Technology</b>	LED
<b>Housing</b>	Aluminium
<b>Mount</b>	Ceiling recessed mounting
<b>Environment</b>	Internal
<b>General application</b>	Education, Hospitality, Office, Retail
<b>Performance ambient temperature Tq (°C)</b>	25
<b>ETIM Class</b>	EC002557
<b>E-number FI</b>	4237858
<b>Warranty</b>	5 years

#### Optical data

<b>Fixture luminous flux (lm)</b>	1150
<b>Luminaire efficacy (lm/W)</b>	115
<b>LOR (%)</b>	100
<b>Colour temperature (K)</b>	4000
<b>Light colour</b>	Neutral White
<b>CRI (Ra)</b>	80
<b>Colour Variation Initial (SDCM)</b>	SDCM3
<b>Adjustable chromaticity</b>	N
<b>Glare control</b>	< 17
<b>Photobiological Risk Group</b>	RG0

#### Electrical data

<b>Total power consumption (W)</b>	10
<b>Mains voltage (V)</b>	220-240V
<b>Lamp power factor</b>	0.95
<b>Electrical protection</b>	Class I
<b>Control gear type</b>	Electronic ballast
<b>Transformer required</b>	Yes
<b>Dimming method</b>	DALI
<b>Minimum dimming level (%)</b>	1
<b>Drive current (mA)</b>	400
<b>Inrush Current (A)</b>	17
<b>Inrush Duration (µs)</b>	170
<b>Energy Efficiency Class (A-&gt;G) of contained light source</b>	C
<b>Max. Luminaires per 16A C Breaker</b>	48

#### Lifetime data

<b>Lifespan L70 B50</b>	120000
<b>Lifespan L80 B20</b>	120000
<b>Lifespan L90 B10</b>	66000

## Mini Continuum II - Direct - Trim - Extensions

### MC2 TRIM 0.6M 4K DALI WHT OPAL

### 2093160

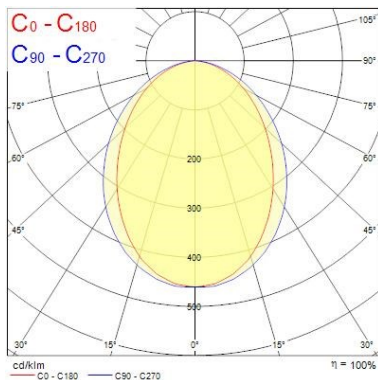
#### Physical data

Housing colour	White
IP rating	IP20
IK rating	IK02
Diffuser finish	Opal
Diffuser material	PC Polycarbonate
Nominal Product Length (mm)	600
Nominal Product Width (mm)	80
Nominal Product Height (mm)	86
Cutout Dimensions (W x L in mm or Diameter in mm)	60 x 600
Weight (kg)	1.5
Recessed Depth (mm)	136

#### Packaging

Single packaging type	Carton
Product EAN number	5025768931606
Packaging single length / height (cm)	65.0
Packaging single width (cm)	9.0
Packaging single depth (cm)	10.0
DUN14 (outer)	05025768931606
Units per outer package	1
Packaging outer length / height (cm)	65.0
Packaging outer width (cm)	9.0
Packaging outer depth (cm)	10.0

## PHOTOMETRY



Distance [m]	Cone diameter [m]	E <sub>0°</sub> [lx]	E <sub>C90</sub> [lx]	E <sub>C0</sub> [lx]
0.5	1.11 0.88	2184	48.1° 351	41.3° 457
1.0	2.23 1.76	538	48.1° 90	41.3° 114
1.5	3.34 2.64	239	48.1° 36	41.3° 51
2.0	4.46 3.51	138	48.1° 22	41.3° 29
2.5	5.57 4.39	88	48.1° 13	41.3° 18
3.0	6.69 5.27	60	48.1° 9	41.3° 13

Distance [m]    Cone diameter [m]    Illuminance [lx]

— C0 - C180 (Half beam angle: 82.6°)  
— C90 - C270 (Half beam angle: 96.2°)

## TECHNICAL DRAWINGS

## Mini Continuum II - Direct - Trim - Extensions

*MC2 TRIM 0.6M 4K DALI WHT OPAL*  
2093160

