

## Parallel rest pairs



### Application:

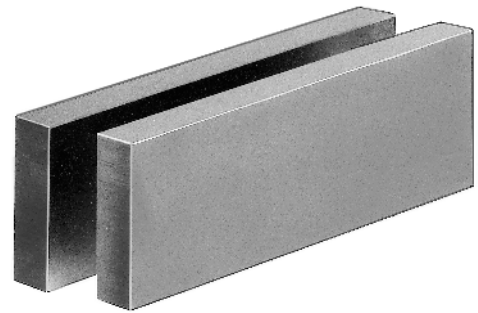
For parallel support of workpieces in machine vices, marking-off plates or machine tools during drilling, grinding, milling, planing, marking off and measuring; particularly suitable for supporting in machine vices, marking-off plates or machine tools.

### Execution:

- Steel.
- In pairs, tolerance IT 5, nominal dimensions in accordance with DIN ISO 2768-1, tolerance class M.
- Case-hardened, finely polished in pairs and true-to-angle.

### Delivery:

1x pair of parallel rests



|                                    |                  |
|------------------------------------|------------------|
| <b>Art. no.</b>                    | <b>26257 312</b> |
| <b>Brand</b>                       | AMF              |
| <b>Manufacturer Part Number</b>    | 72181            |
| <b>Parallel rest length</b>        | 100 mm           |
| <b>Parallel rest width</b>         | 4 mm             |
| <b>Parallel rest height</b>        | 12 mm            |
| <b>Alignment tolerance, width</b>  | 0.005 mm         |
| <b>Alignment tolerance, height</b> | 0.008 mm         |
| <b>DIN</b>                         | 7168             |
| <b>Gross Weight</b>                | 0.125 kg         |
| <b>Product Group</b>               | 260              |

### EAN

4020772072186