


PCB TERMINAL BLOCKS

7.5mm Pitch High Power 90° Rising Clamp Terminal Blocks

- 2 & 3 pole double interlocking mechanism for increased strength
- 4-12 pole pre-assembled
- Moulded in green UL94-V0 flame retardant PA66
- Professional rising clamp terminals
- 0.2-4.0mm² (30-12AWG) solid cable
- 0.2-2.5mm² (30-12AWG) stranded cable
- Guided pin alignment
- Captive screw
-  approved

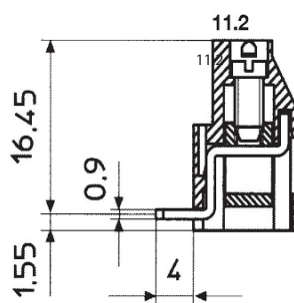
CTB07HK



TYPE NO.	POLES	LENGTH
	2	15mm
	3	22.5mm
	4	30mm
	5	37.5mm
	6	45mm
	7	52.5mm
	8	60mm
	9	67.5mm
	10	75mm
	11	82.5mm
	12	90mm

SPECIFICATION

Rating	24A/500V UL=16A/300V, VDE&IMQ=24A/750V
Dielectric strength	≥3kV
Impulse withstand voltage	6kV
Working temperature	110°C
Moulding	UL94-V0 flame retardant PA66
Pin/terminal	Tinned, nickel plated brass
Rising clamp	Tinned, nickel plated brass
Screw/torque	M3 steel zinc plated, 0.5Nm
Recommended PCB hole size	ø1.5mm



For other dimensions see CTB07VK

PCB
TERMINAL
BLOCKS

INTER-
CONNECTION

FUSES &
FUSE-
HOLDERS

LEDs &
INDICATORS

MINIATURE
SWITCHES

LIMIT &
SAFETY
SWITCHES

CONTROL
PRODUCTS

INTERFACE
MODULES &
SUPPORTS

RELAY
BASES

DIN RAIL
ENCLOSURES

BATTERIES

SOLAR
PANELS

TRANS-
FORMERS