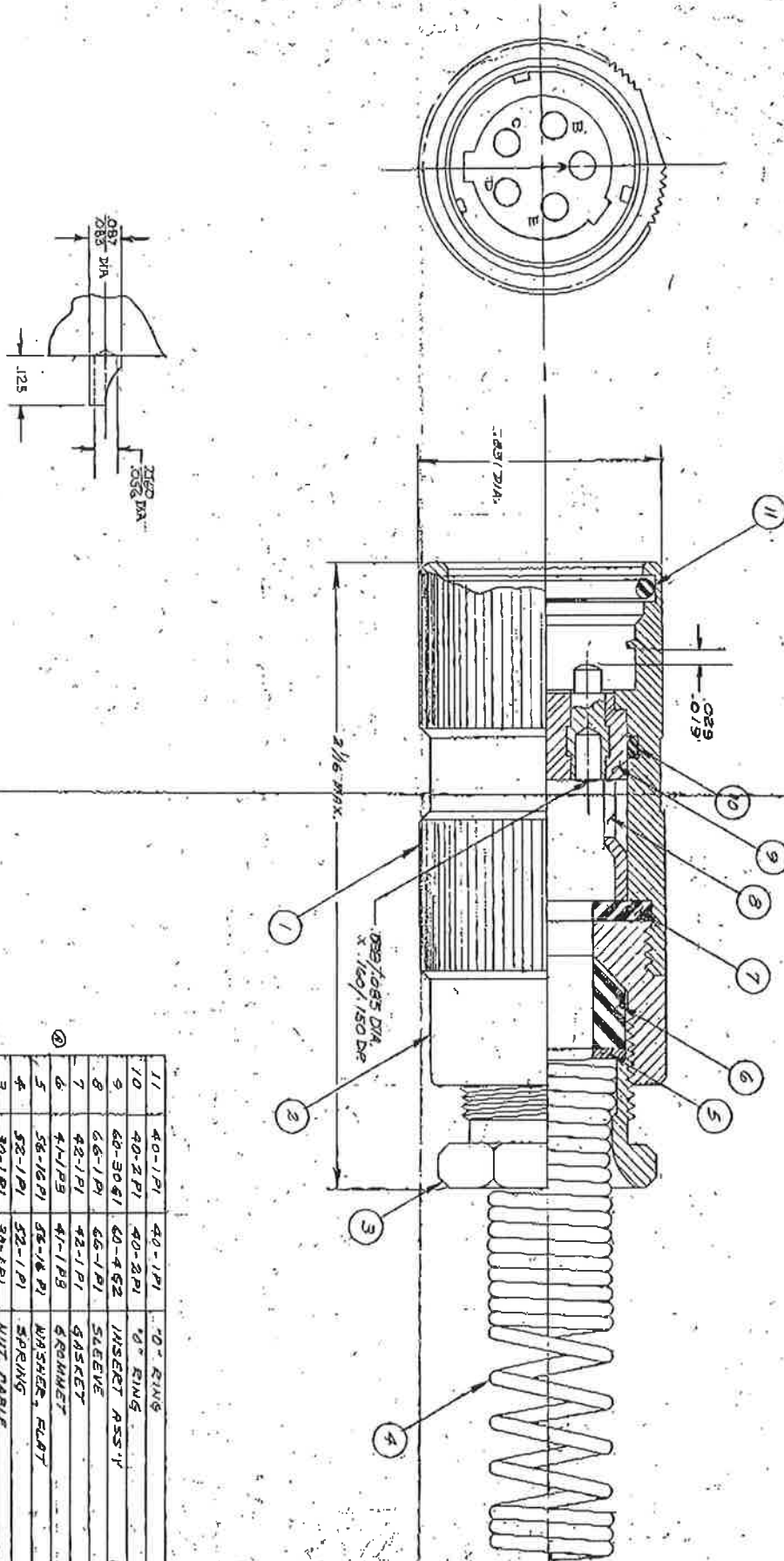


DIMENSIONS IN INCHES
DO NOT SCALE PRINT



SOLDER TERMINATION: U-229/52

REVISIONS		UNLESS OTHERWISE SPECIFIED:	
1	REV. TO PREVIOUS CON 229	TOLERANCES UNLESS OTHERWISE SPECIFIED:	
2	REV. TO PREVIOUS CON 229	FRACTIONS: 1/16, 1/8, 1/4, 1/2, 3/4, 1	
3	REV. TO PREVIOUS CON 229	DECIMALS: .005, .010, .015, .020, .025, .030, .035, .040, .045, .050, .055, .060, .065, .070, .075, .080, .085, .090, .095, .100, .105, .110, .115, .120, .125, .130, .135, .140, .145, .150, .155, .160, .165, .170, .175, .180, .185, .190, .195, .200, .205, .210, .215, .220, .225, .230, .235, .240, .245, .250, .255, .260, .265, .270, .275, .280, .285, .290, .295, .300, .305, .310, .315, .320, .325, .330, .335, .340, .345, .350, .355, .360, .365, .370, .375, .380, .385, .390, .395, .400, .405, .410, .415, .420, .425, .430, .435, .440, .445, .450, .455, .460, .465, .470, .475, .480, .485, .490, .495, .500, .505, .510, .515, .520, .525, .530, .535, .540, .545, .550, .555, .560, .565, .570, .575, .580, .585, .590, .595, .600, .605, .610, .615, .620, .625, .630, .635, .640, .645, .650, .655, .660, .665, .670, .675, .680, .685, .690, .695, .700, .705, .710, .715, .720, .725, .730, .735, .740, .745, .750, .755, .760, .765, .770, .775, .780, .785, .790, .795, .800, .805, .810, .815, .820, .825, .830, .835, .840, .845, .850, .855, .860, .865, .870, .875, .880, .885, .890, .895, .900, .905, .910, .915, .920, .925, .930, .935, .940, .945, .950, .955, .960, .965, .970, .975, .980, .985, .990, .995, 1.000	
4	REV. TO PREVIOUS CON 229	ANGLES: 15, 30, 45, 60, 75, 90, 105, 120, 135, 150, 165, 180	
5	REV. TO PREVIOUS CON 229	THREADS: PER ANSI B1.13-1	
6	REV. TO PREVIOUS CON 229	FINISHES: UNLESS OTHERWISE SPECIFIED:	
7	REV. TO PREVIOUS CON 229	ALL DIMENSIONS TO BE CONSIDERED UNLESS OTHERWISE SPECIFIED	
8	REV. TO PREVIOUS CON 229	ALL DIMENSIONS TO BE CONSIDERED UNLESS OTHERWISE SPECIFIED	
9	REV. TO PREVIOUS CON 229	ALL DIMENSIONS TO BE CONSIDERED UNLESS OTHERWISE SPECIFIED	
10	REV. TO PREVIOUS CON 229	ALL DIMENSIONS TO BE CONSIDERED UNLESS OTHERWISE SPECIFIED	
11	REV. TO PREVIOUS CON 229	ALL DIMENSIONS TO BE CONSIDERED UNLESS OTHERWISE SPECIFIED	

ITEM NO.	QTY	PART NUMBER	DESCRIPTION
1	1	40-1P1	0° RING
2	1	40-2P1	INSERT ASSY
3	1	40-30S1	SLEEVE
4	1	42-1P1	GASKET
5	1	41-1P3	GROMMET
6	1	58-16P1	WASHER, FLAT
7	1	52-1P1	SPRING
8	1	30-1P1	NUT, CABLE
9	1	29-1P1	NUT, ADAPTER
10	1	18-3P1	SHELL

Dwg. No. U-229/11
 USED ON U-229/11
 DATE 5/6/78
 DESIGNED BY [Signature]
 CHECKED BY [Signature]
 SCALE AS SHOWN
 GENERAL CONNECTOR CORP.
 NEWTON, MASS.