

Category 5e Shielded Keystone Panel Mount Coupler



Category 5e Shielded Keystone Panel Mount Coupler (FACK2S)

Features

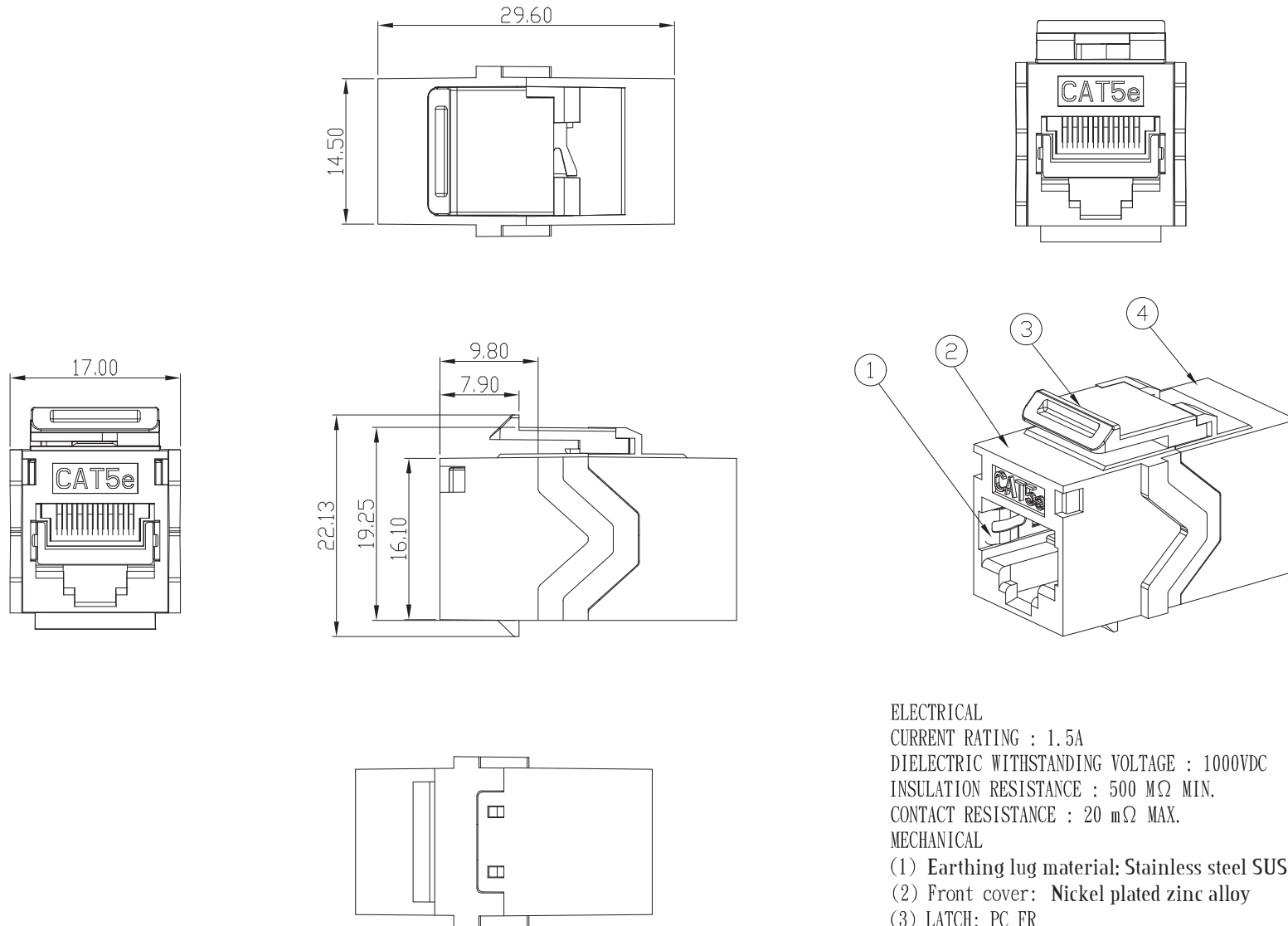
- Designed to fit industry standard keystone outlets, wall plates and patch panels
- High performance data throughput, meets Category 5e data transfer rates
- Unshielded versions available
- Plug insertion life ≥ 750 times
- Operating temperature: $-40^{\circ}\text{C} \sim +66^{\circ}\text{C}$
- Fully loaded 16 and 24 port patch panels available with or without cable management
- Available as part of our innovative panel mount and D UNIVERSAL ranges

Specifications

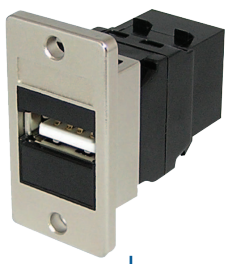
- Housing: Nickel plated zinc alloy
- Contacts: Phosphor bronze, $50\mu\text{m}/1.27\mu\text{m}$ gold plated over contact area
- Colour: Silver
- Dimensions: approx 29.7 x 17 x 16.1 mm
- Weight: approx 17g
- Earthing lug material: Stainless steel SUS304

ROHS Compliant

Code: FACK2S



ELECTRICAL
CURRENT RATING : 1.5A
DIELECTRIC WITHSTANDING VOLTAGE : 1000VDC
INSULATION RESISTANCE : 500 M Ω MIN.
CONTACT RESISTANCE : 20 m Ω MAX.
MECHANICAL
(1) Earthing lug material: Stainless steel SUS304
(2) Front cover: Nickel plated zinc alloy
(3) LATCH: PC FR
(4) Bottom cover: Nickel plated zinc alloy



KCUBpm



KCUAA2bkpm



KCUAAXbkpm



KCUAA3bkpm



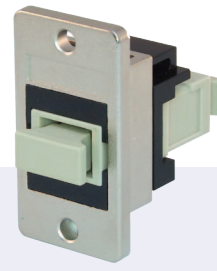
KCUAA311whpm



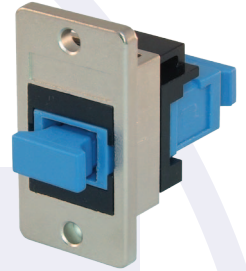
KCHDbkpm



KCK66pm



KOCMMpm



KOCSMpm



KOLMMDXpm



KOLSMDXpm



KOTSMpm



KOTMMpm



SKmcbkpm



FACK2pm



SACK2whpm



FACK2Spm



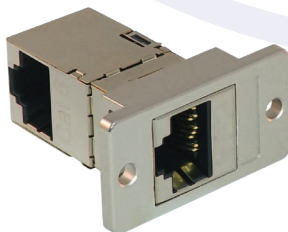
SACK3Spm



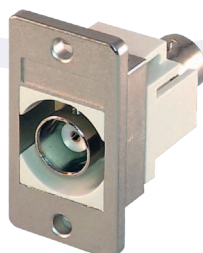
SGKSsu+pm



SGACK2S



SACK90Spm



KBNC50pm



KBNC75pm



KSPbkpm



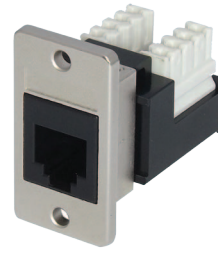
KSPrdpm



SKFwhpm



SKFSpm



KSH66pm



KCFpm



KGB1pm



KRCA*whpm



KC3.5whpm



SLJwhpm

Code	Description
KCUABpm	USB A female to B female adaptor, reversible
KCUAA2pm	USB2.0 A female to A female coupler
KCUAAXbkpm	USB2.0 A female to A female coupler, reversible
KCUAA3bkpm	USB3 female to female coupler, cross-wired
KCUAA311whpm	USB3 female to female coupler, wired 1:1
KCHDpm	HDMI female to female coupler
KCK66pm	RJ12 6P6C female to female coupler
KOCMMpm	Fibre female to female coupler SC to SC, multi mode simplex
KOCSMpm	Fibre female to female coupler SC to SC, single mode simplex
KOLMMDXpm	Fibre female to female coupler LC to LC, multi mode duplex
KOLSMDXpm	Fibre female to female coupler LC to LC, single mode duplex
KOTSMPpm	Fibre female to female coupler ST to ST, single mode simplex, yellow dustcover
KOTMMPpm	Fibre female to female coupler ST to ST, multi mode simplex, black dustcover
SKmcbkpm	Category 6 IDC socket, LSA-Plus and 110 type termination, unshielded
FAK2pm	Category 5e female to female coupler, unshielded
SACK2whpm	Category 6 female to female coupler, unshielded
FAK2Spm	Category 5e female to female coupler, shielded
SACK3Spm	Category 6 female to female coupler, shielded
SGKSsu+pm	Category 6A tool-less socket, shielded
SGACK2Spm	Category 6A female to female coupler, shielded (Cat 6 coupler, shielded also available)
SACK90Spm	Cat 6 female to female coupler, w/rear outlet 90° to front outlet, shielded or unshielded
KBNC50pm	BNC 50 ohm female to female coupler
KBNC75pm	BNC true 75 ohm female to female coupler (capable of data rates up to 3 Gb/s or higher)
KSPbkpm	Speaker module in black with black elastic identifier
KSPrdpm	Speaker module in black with red elastic identifier
SKFwhpm	Category 6 tool-less IDC socket, unshielded (Category 5e also available)
SKFSpm	Category 6/6A tool-less IDC socket, shielded
KSH66pm	RJ12 6p6c socket
KCFpm	F connector, female to female coupler
KGB1pm	UK telephone socket - PSTN Master (Slave/Secondary version also available)

KRCA*whpm	RCA coupler - available with black/white/yellow/red insert
KC3.5pm	3.5mm coupler
SLJpm	LOKJAC Category 6 tool-less locking keystone

*: Black = bk, Red = rd, White = wh, Yellow = yw

More Information:

TUK's Panel Mount Connectors Range offers a wide variety of audio, video and data connectors which can easily be mounted into panels of virtually any thickness.

Die cast adaptor KApma is robust and ensures easy mounting (into standard cut-out) and reliable earthing. Can be purchased separately in packs of 20 pcs.

All connectors are made to relevant standards. Category 6 and 6A connectors are made, for example, to FCC68 and to TIA/EIA 568B and have an insertion life of >750 mating cycles. All products are CE compliant (i.e including ROHS and REACH)

6th March, 2017

Specifications:

- Kit includes coupler/connector, panel mount adaptor and 2 x round head nickel-plated steel self-tapping screws.
- For specifications of couplers and sockets, see separate web pages as follows:

USB A female to B female coupler: http://www.tuk.co.uk/tuk_live/product_details.php?category_id=&pId=182

USB2.0 A female to A female: http://www.tuk.co.uk/tuk_live/product_details.php?category_id=&pId=224

USB2.0 A female to A female, reversible: http://www.tuk.co.uk/tuk_live/product_details.php?category_id=&pId=279

USB3 female to female coupler, cross-wired: http://www.tuk.co.uk/tuk_live/product_details.php?category_id=1&pId=267

USB3 female to female coupler, wired 1:1: http://www.tuk.co.uk/tuk_live/product_details.php?category_id=1&pId=269

HDMI female to female coupler: http://www.tuk.co.uk/tuk_live/product_details.php?category_id=&pId=185

RJ12 female to female coupler: http://www.tuk.co.uk/tuk_live/product_details.php?category_id=&pId=170

Fibre female to female couplers: http://www.tuk.co.uk/tuk_live/product_details.php?category_id=&pId=209

Cat 6 IDC UTP jack: http://www.tuk.co.uk/tuk_live/product_details.php?category_id=&pId=192

Cat 5e UTP and FTP female to female coupler: http://www.tuk.co.uk/tuk_live/product_details.php?category_id=&pId=246

Cat 6 UTP and FTP female to female coupler: http://www.tuk.co.uk/tuk_live/product_details.php?category_id=&pId=243

Cat 6A FTP jack: http://www.tuk.co.uk/tuk_live/product_details.php?category_id=&pId=113

Cat 6A FTP female to female coupler: http://www.tuk.co.uk/tuk_live/product_details.php?category_id=&pId=150

90° Cat 6 panel mount female to female coupler: http://www.tuk.co.uk/tuk_live/product_details.php?category_id=&pId=133

BNC 50 ohm female to female coupler: http://www.tuk.co.uk/tuk_live/product_details.php?category_id=&pId=218

BNC true 75 ohm female to female coupler: http://www.tuk.co.uk/tuk_live/product_details.php?category_id=&pId=221

Speaker module: http://www.tuk.co.uk/tuk_live/product_details.php?category_id=&pId=201

Cat 5e and Cat6 tool-less UTP socket: http://www.tuk.co.uk/tuk_live/product_details.php?category_id=&pId=173

Cat 6/6A tool-less STP socket: http://www.tuk.co.uk/tuk_live/product_details.php?category_id=&pId=299

RJ12 6p6c socket: http://www.tuk.co.uk/tuk_live/product_details.php?category_id=&pId=264

F connector female to female coupler: http://www.tuk.co.uk/tuk_live/product_details.php?category_id=&pId=255

UK telephone socket: http://www.tuk.co.uk/tuk_live/product_details.php?category_id=&pId=280

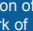
RCA coupler: http://www.tuk.co.uk/tuk_live/product_details.php?category_id=1&pId=296

3.5mm coupler: http://www.tuk.co.uk/tuk_live/product_details.php?category_id=1&pId=309

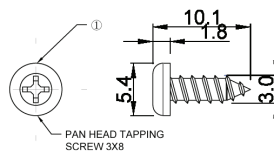
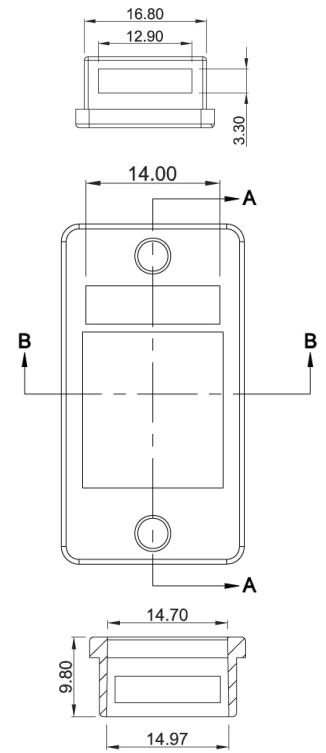
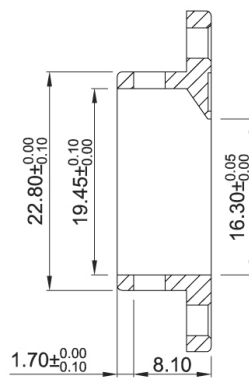
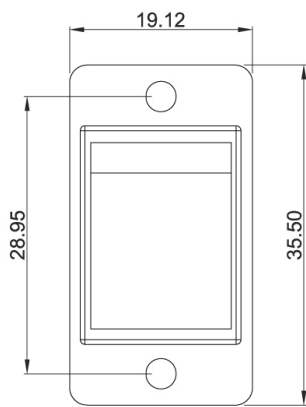
LOKJAC Category 6 tool-less locking keystone: http://www.tuk.co.uk/tuk_live/product_details.php?category_id=1&pId=302

TUK Ltd, Unit 4, Wimbledon Stadium Business Centre, Riverside Road, London SW17 0BA

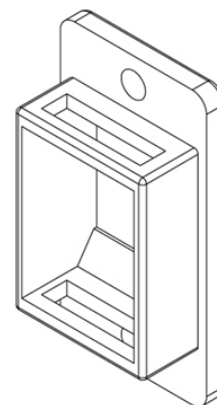
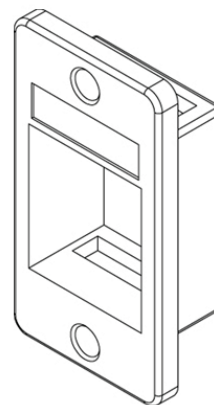
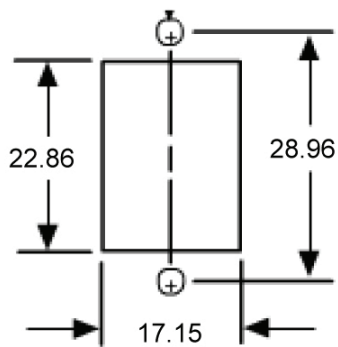
Tel: +44 (0) 20 8946 6688 Fax: +44 (0) 20 8879 7410 Email: sales@tuk.co.uk Website: www.tuk.co.uk

TUK follows a policy of continuous improvement. All information is correct at the time of printing but may be subject to change without prior notification. Please contact TUK for formal confirmation of current specification. HDMI and LSA-Plus are registered trademarks of HDMI Licensing and Krone (UK) Technique Ltd respectively, whose rights are acknowledged.  is a registered trademark of TUK Limited.

Panel Mount Adaptor (KApma)



Requirements for cut-out:



Front

Back

All dimensions are in mm