

SKU:SEN0114 (<https://www.dfrobot.com/product-599.html>)

(<https://www.dfrobot.com/product-599.html>)

Introduction

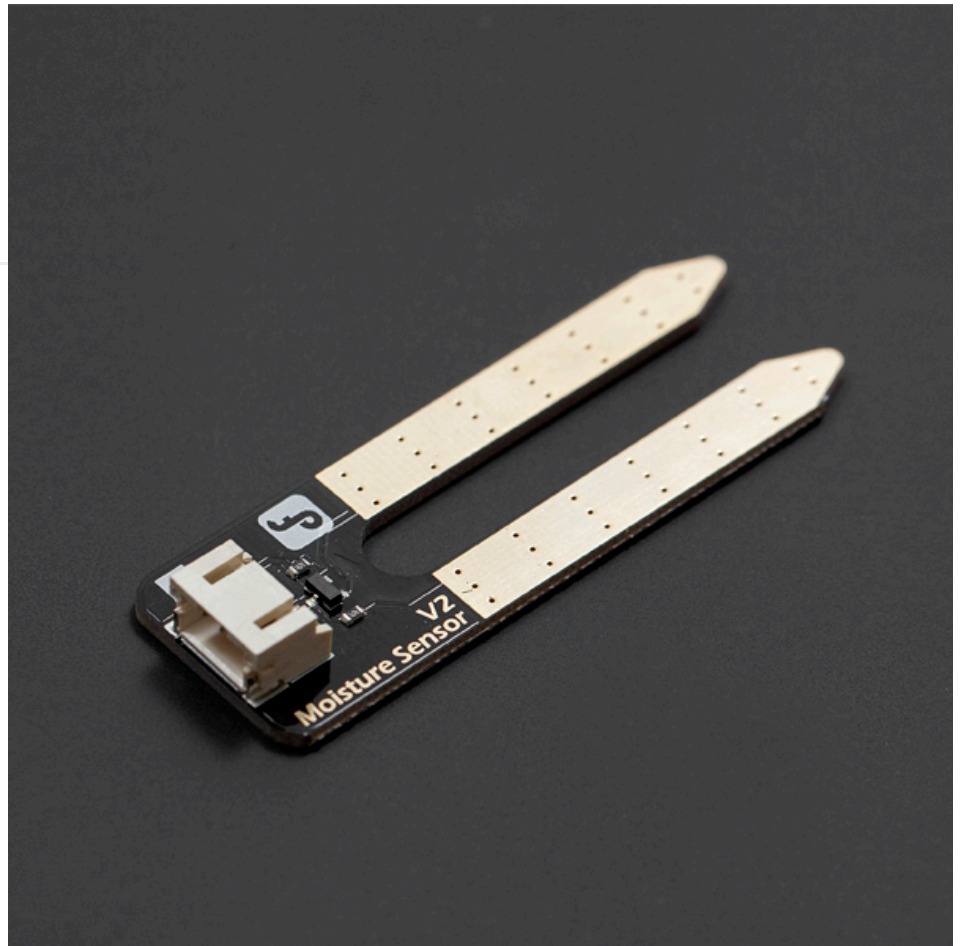
This **Gravity: Analog Soil Moisture Sensor For Arduino**

(<https://www.dfrobot.com/product-599.html>) can read the amount of moisture present in the soil surrounding it. It's a low tech sensor, but ideal for monitoring an urban garden or your pet plant's water level.

This is a must have tool for a connected garden!

This **moisture sensor** (<https://www.dfrobot.com/category-64.html>) uses the two probes to pass current through the soil, and then it reads that resistance to get the relative moisture level. More water makes the soil conduct electricity more easily (less resistance), while dry soil conducts electricity poorly (more resistance).

It can be helpful to remind you to water your indoor plants or to monitor the soil moisture in your garden.

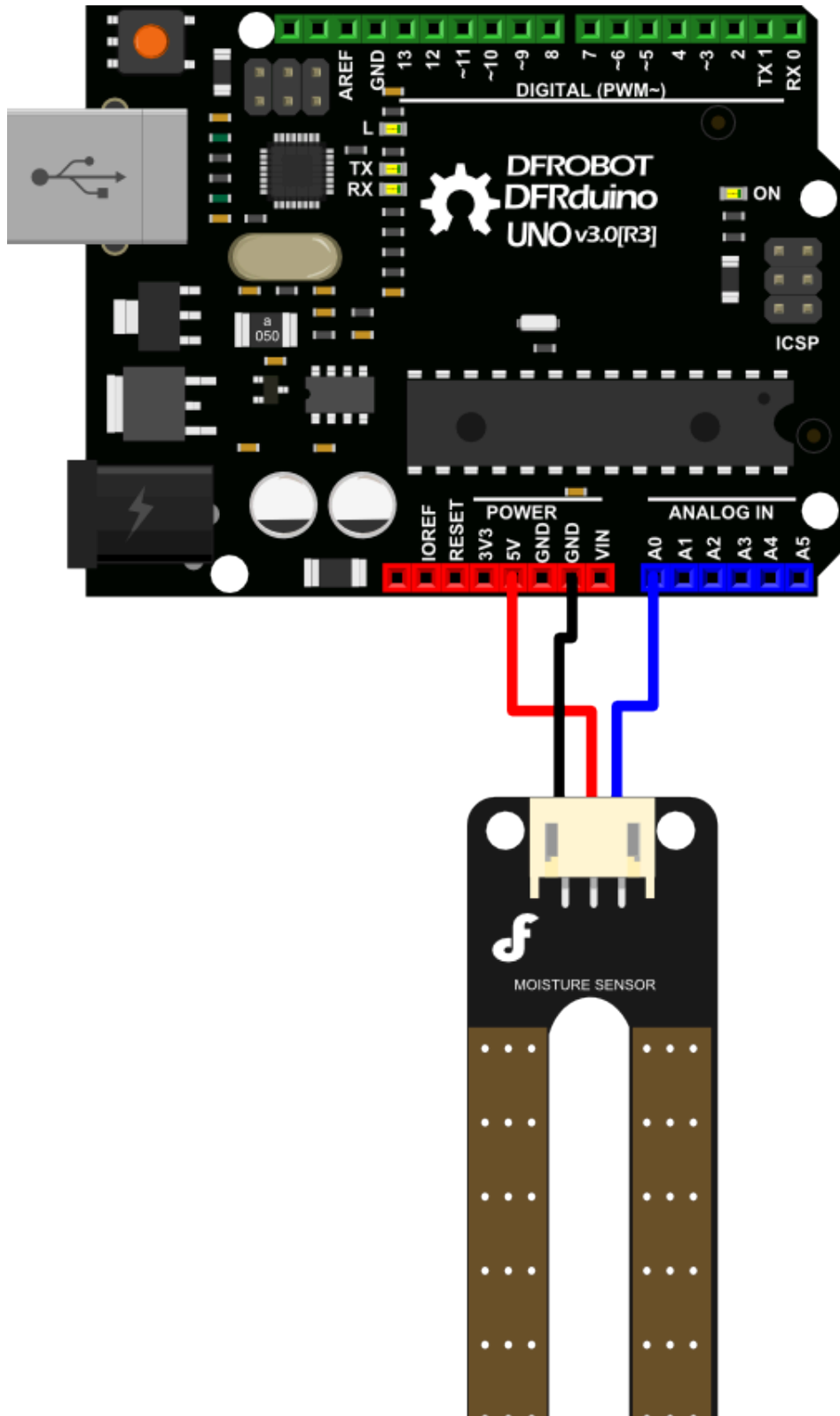


Specification

Specification

- Power supply: 3.3v or 5v
- Output voltage signal: 0~4.2v
- Current: 35mA
- Pin definition:
 - Analog output(Blue wire)
 - GND(Black wire)
 - Power(Red wire)
- Size: 60x20x5mm
- Value range:
 - 0 ~300 : dry soil
 - 300~700 : humid soil
 - 700~950 : in water

Tutorial





Requirements

- **Hardware**

- DFRduino UNO R3 (<https://www.dfrobot.com/product-838.html>) (or similar) x 1
- Analog Soil Moisture Sensor For Arduino (<https://www.dfrobot.com/product-599.html>) x 1

- **Software**

- Arduino IDE (<https://www.arduino.cc/en/software>)

Sample Code

```
/*
  # Example code for the moisture sensor
  # Editor      : Lauren
  # Date       : 13.01.2012
  # Version    : 1.0
  # Connect the sensor to the A0(Analog 0) pin on the Arduino board

  # the sensor value description
  # 0 ~300     dry soil
  # 300~700    humid soil
  # 700~950    in water
*/

void setup(){

  Serial.begin(57600);

}

void loop(){

  Serial.print("Moisture Sensor Value:");
  Serial.println(analogRead(A0));
  delay(100);

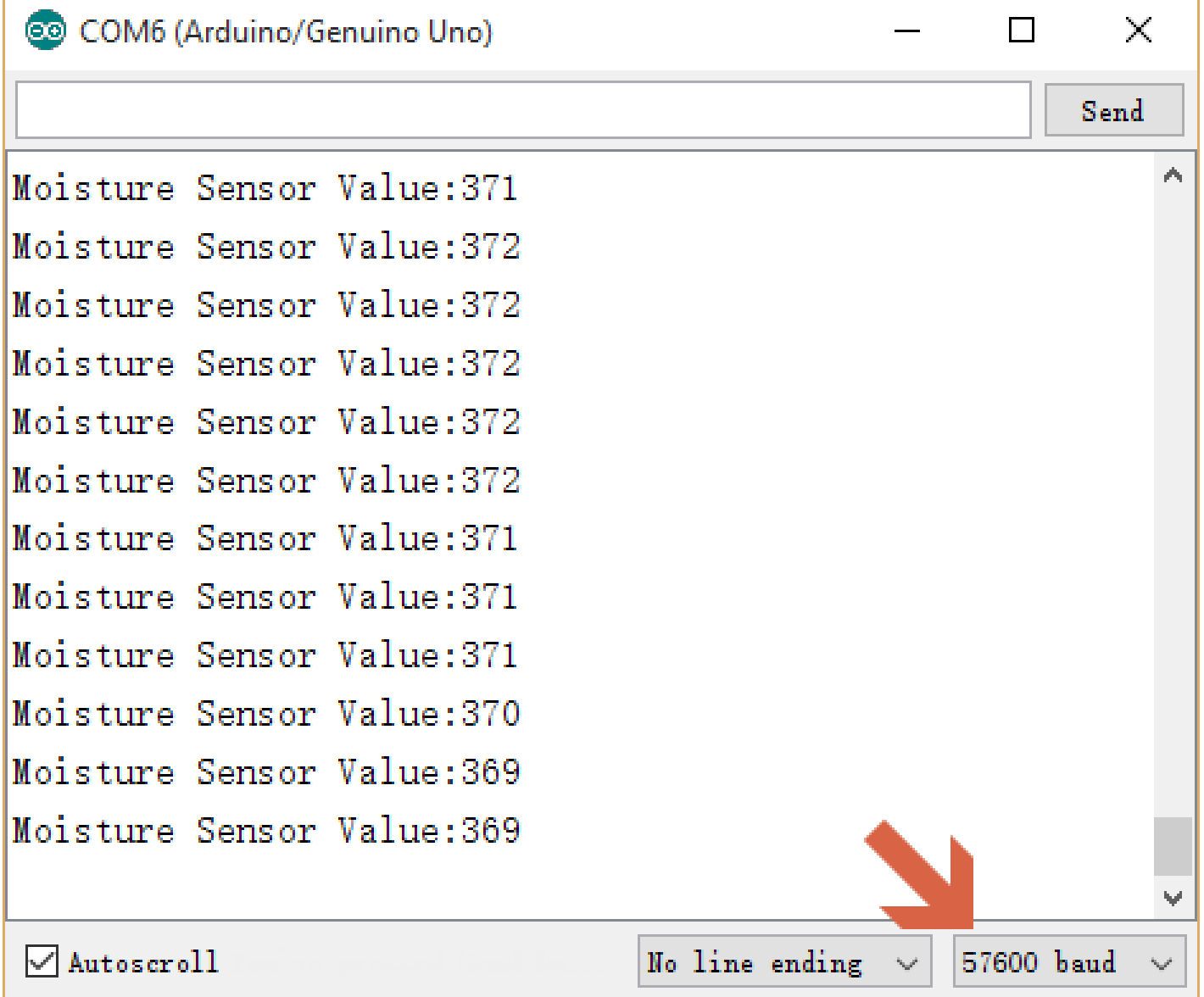
}
```

Expected Results

Open the Arduino Serial Monitor, and choose its baud rate 57600 as set in the code.

File Edit Sketch Tools Help

Serial Monitor



COM6 (Arduino/Genuino Uno)

Moisture Sensor Value:371
Moisture Sensor Value:372
Moisture Sensor Value:372
Moisture Sensor Value:372
Moisture Sensor Value:372
Moisture Sensor Value:372
Moisture Sensor Value:371
Moisture Sensor Value:371
Moisture Sensor Value:371
Moisture Sensor Value:371
Moisture Sensor Value:370
Moisture Sensor Value:369
Moisture Sensor Value:369

Autoscroll

No line ending

57600 baud

FAQ

Q&A	Some general Arduino Problems/FAQ/Tips
A	For any questions, advice or cool ideas to share, please visit the DFRobot Forum (https://www.dfrobot.com/forum/).

More Documents



- **Share**

- Relative humidity to absolute humidity calculator
(<https://planetcalc.com/2167/>)